



92 Colebrook Road, Swindon

Swindon

In Excess of £300,000

mcfarlane



# 92 Colebrook Road

Swindon, Swindon

This beautifully extended family home in Coleview offers spacious living with modern updates throughout. Featuring a converted garage, three bedrooms, and a generous rear garden, it's perfect for families. Conveniently located near Greenbridge Retail Park, amenities, and transport links.

Council Tax band: D

Tenure: Freehold

EPC Energy Efficiency Rating: C

EPC Environmental Impact Rating: D

- THREE BEDROOMS
- END OF CHAIN
- MODERNISED THROUGHOUT
- EXTENDED
- DRIVEWAY PARKING
- SN3 LOCATION





# 92 Colebrook Road

Swindon





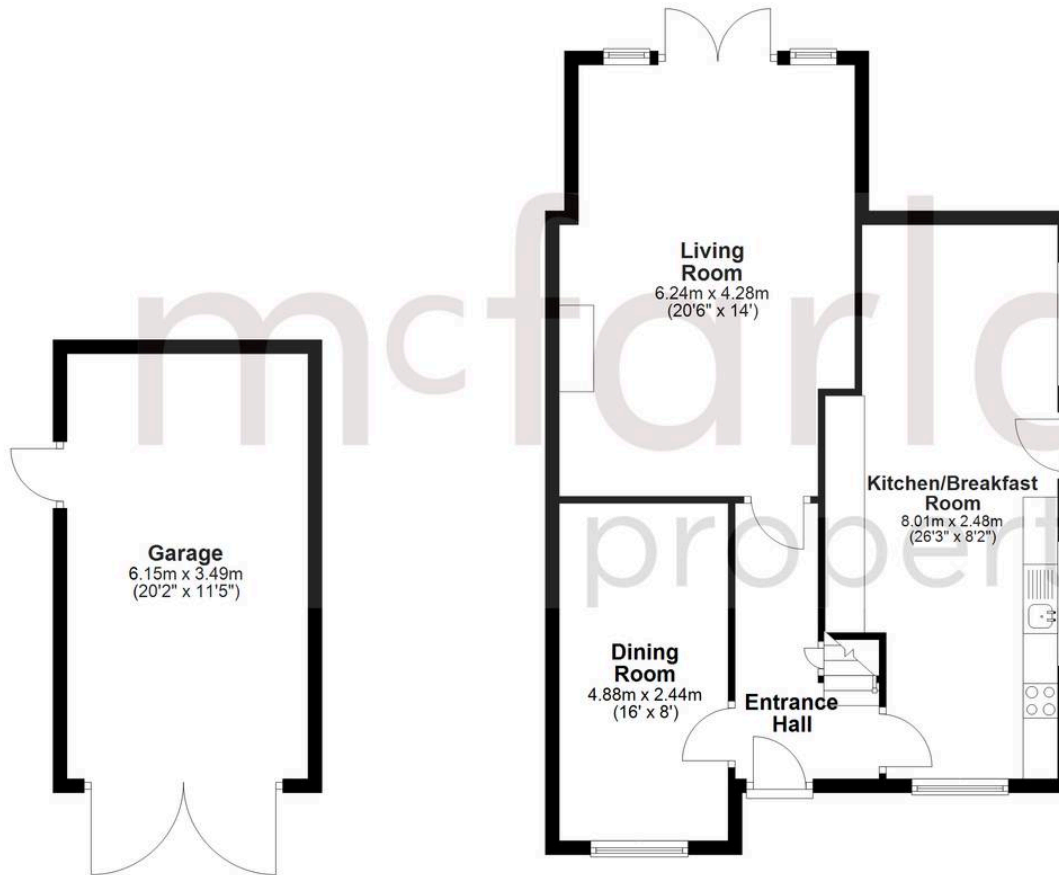
# 92 Colebrook Road

Swindon

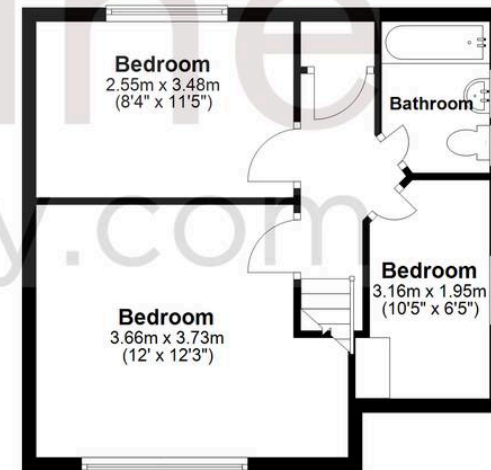




**Ground Floor**  
Approx. 90.7 sq. metres (975.8 sq. feet)



**First Floor**  
Approx. 39.0 sq. metres (419.8 sq. feet)



Total area: approx. 129.7 sq. metres (1395.6 sq. feet)

## McFarlane Sales & Lettings

McFarlane Sales & Letting Ltd, 28-30 Wood Street - SN1 4AB

01793 296880 • oldtown@mcfarlaneproperty.com • www.mcfarlaneproperty.com/

mcfarlane  
property.com