



13, Towpath Gardens, The Moorings

Swindon

£115,000

13 The Moorings

Towpath Gardens The Moorings, Swindon

A spacious first floor apartment ideally located in Swindon Town Centre close to local amenities and Swindon Railway Station. Accommodation comprises a fitted kitchen open to the sitting room with balcony, a spacious double bedroom and a bathroom with three piece suite. Property also benefits from secure entry phone system, allocated parking and electric heating.

Ideal for first time buyers and investors.

Council Tax band: A

Tenure: Leasehold

EPC Energy Efficiency Rating: C

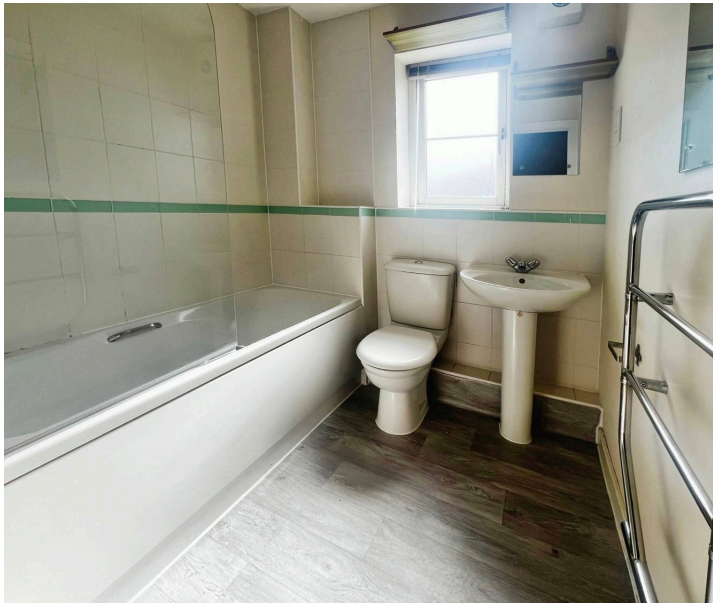
EPC Environmental Impact Rating: D

- ONE BEDROOM APARTMENT
- SNI LOCATION
- ALLOCATED PARKING
- OPEN PLAN LIVING
- NO ONWARD CHAIN



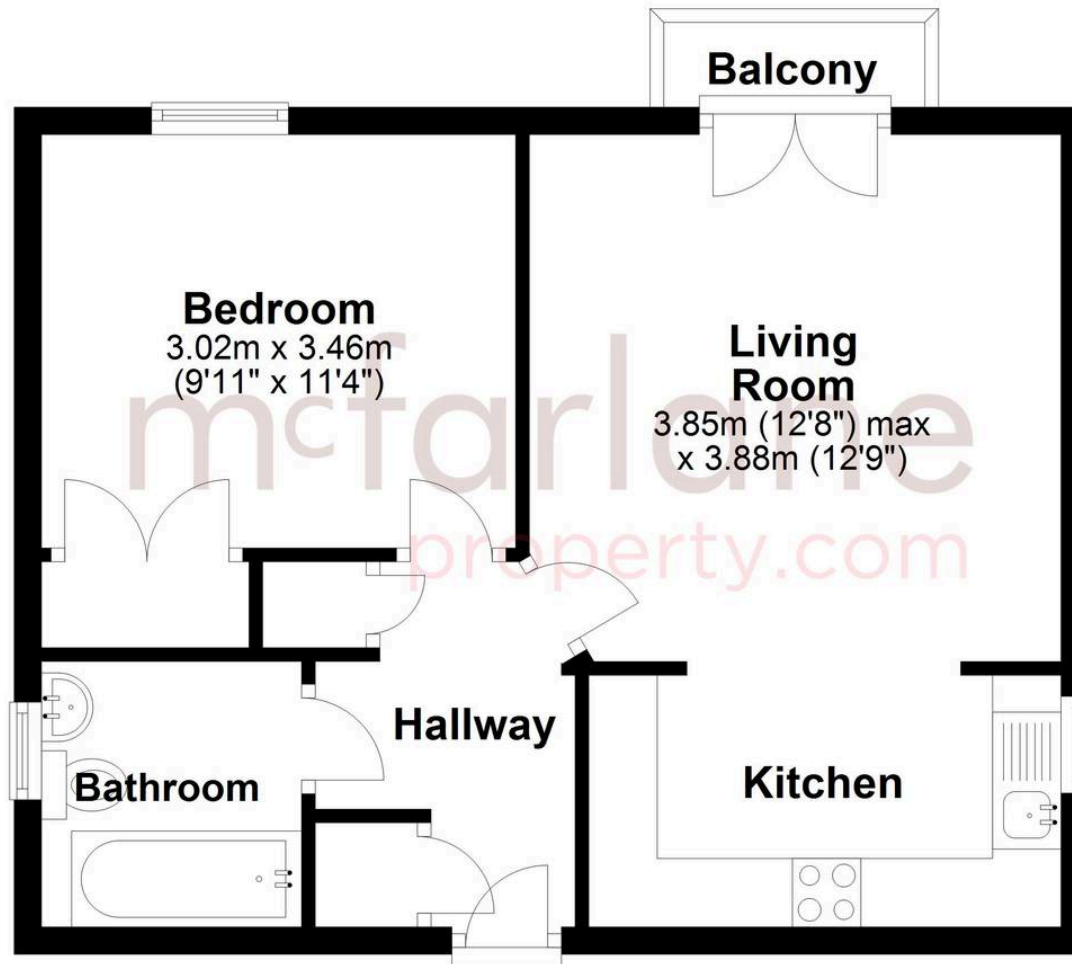


Lease Expiry-01/01/2134 (109)
Ground Rent-£460.00 per year
Service Charge-£1,800.00 per year



First Floor

Approx. 43.1 sq. metres (463.9 sq. feet)



Total area: approx. 43.1 sq. metres (463.9 sq. feet)

McFarlane Sales & Lettings

McFarlane Sales & Letting Ltd, 28-30 Wood Street - SN1 4AB

01793 296880 • oldtown@mcfarlaneproperty.com • www.mcfarlaneproperty.com/

mcfarlane
property.com