



Western Gate, Marlborough Road

Swindon

£390,000



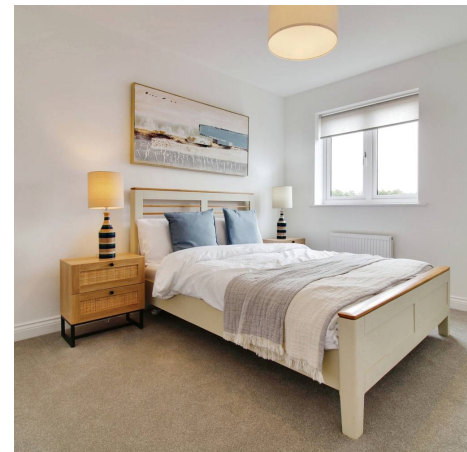
Western Gate

Marlborough Road, Swindon

A spacious 4 bed family home with versatile living over 3 floors. With an impressive open plan kitchen/living/dining room and WC on the ground floor, a large L shaped double bedroom, bedroom 4 and a family bathroom on the 2nd floor and 2 further double bedrooms both with en-suite shower rooms on the 3rd floor.

Tenure: Freehold

- NEW HOME
- LARGE OPEN PLAN LIVING / KITCHEN / DINING ROOM
- THREE DOUBLE BEDROOMS AND SINGLE / STUDY
- SEMI DETACHED
- THREE STOREY HOME
- READY TO MOVE INTO NOV/DEC 2024
- TWO EN-SUITES
- FAMILY BATHROOM AND WC



Hall

Living

16' 11" x 9' 1" (5.15m x 2.78m)

Kitchen

11' 7" x 9' 5" (3.52m x 2.87m)

Dining

8' 4" x 6' 10" (2.53m x 2.09m)

WC

First Floor Landing

Bedroom 2

16' 3" x 15' 3" (4.96m x 4.66m)

Bedroom 4/Study

10' 8" x 6' 9" (3.25m x 2.05m)

Bathroom

Second Floor Landing

Bedroom 1

13' 5" x 9' 1" (4.09m x 2.78m)

Bedroom 1 En-suite

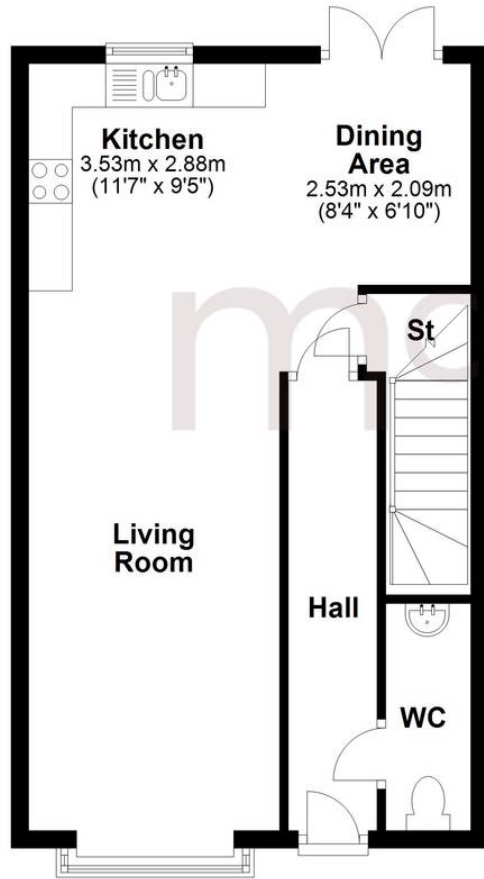
Bedroom 3

16' 3" x 9' 1" (4.96m x 2.78m)

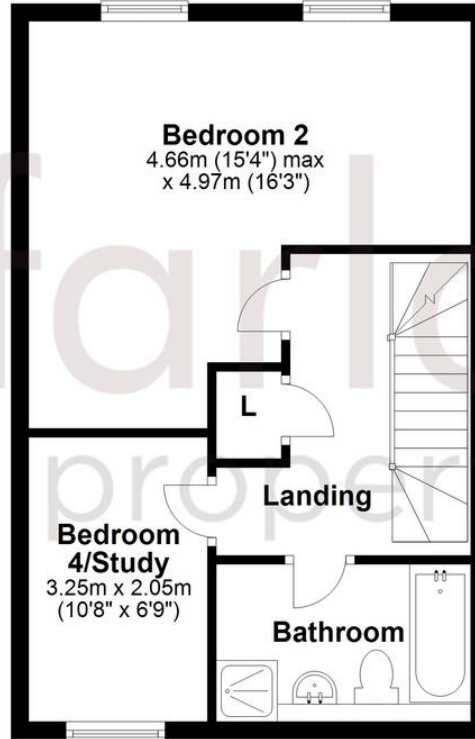
Bedroom 3 En-suite



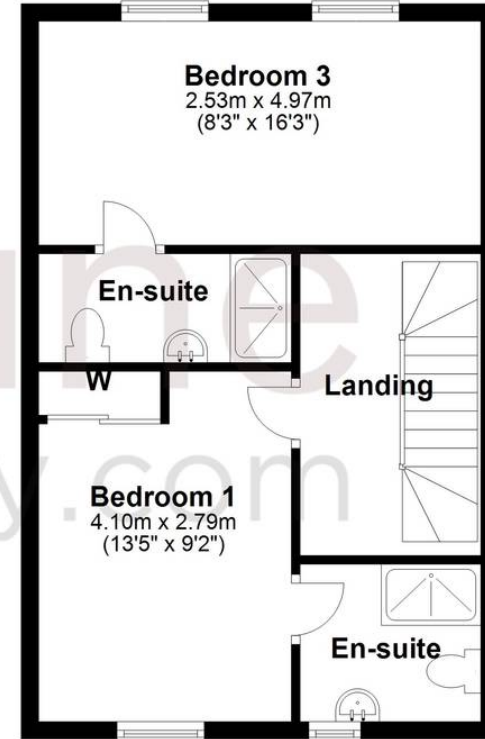
Ground Floor



First Floor



Second Floor



Old Town Sales

McFarlane Sales & Letting Ltd, 28-30 Wood Street - SN1 4AB

01793 296880 • oldtown@mcfarlaneproperty.com • www.mcfarlaneproperty.com/