



Kingsdown Road, Swindon

Swindon

£364,995



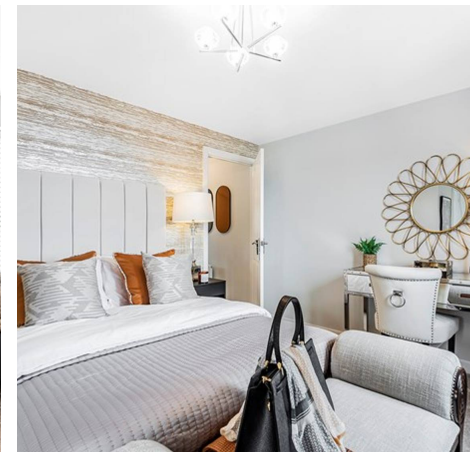
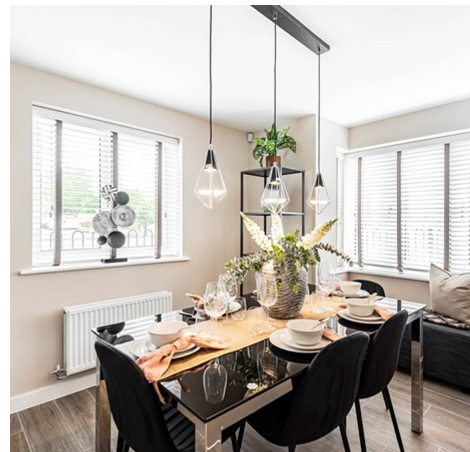
Kingsdown Road

Swindon

Enjoy the best of modern living in this popular three-bedroom home which benefits from a stylish open-plan kitchen/breakfast room and separate utility with garden access. The Charnwood Corner features a bright dual-aspect living room with French doors leading into the garden, handy storage cupboards and downstairs WC. Upstairs there are three good-sized bedrooms - bedroom one with an en suite - a family bathroom and further storage cupboards.

Tenure: Freehold

- NEW HOME
- DETACHED
- SINGLE GARAGE
- PARKING SPACE
- LARGE RECEPTION ROOM
- KITCHEN BREAKFAST ROOM
- UTILITY
- WC
- THREE BEDROOMS
- EN-SUITE



Living Room

18' 5" x 10' 2" (5.62m x 3.11m)

Kitchen/Breakfast Room

18' 1" x 9' 4" (5.51m x 2.84m)

Utility

WC

Bedroom 1

10' 4" x 10' 1" (3.16m x 3.08m)

En-Suite

Bedroom 2

9' 5" x 10' 3" (2.88m x 3.13m)

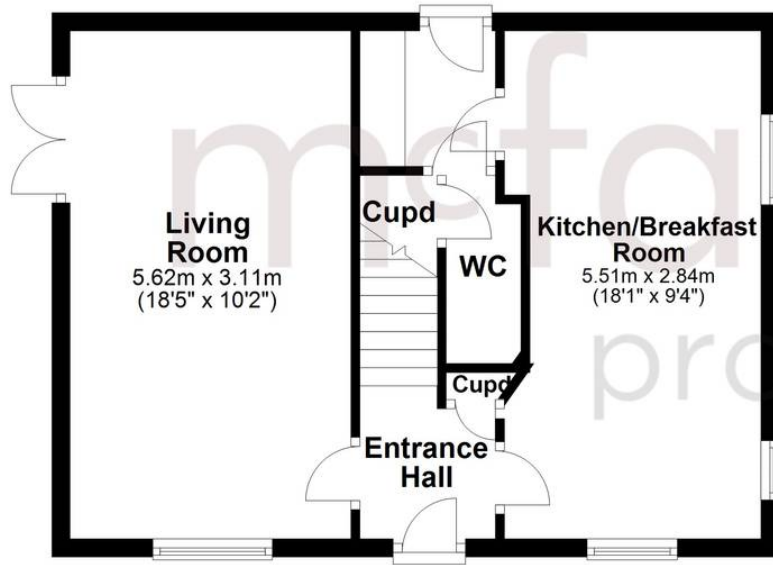
Bedroom 3 / Study

7' 5" x 8' 8" (2.25m x 2.65m)

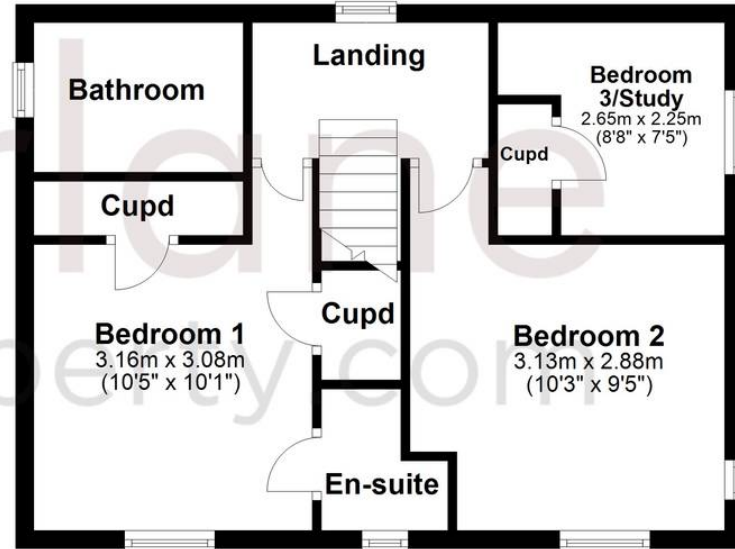
Bathroom



Ground Floor



First Floor



Old Town Sales

McFarlane Sales & Letting Ltd, 28-30 Wood Street - SN1 4AB

01793 296880 • oldtown@mcfarlaneproperty.com • www.mcfarlaneproperty.com/