



mcfarlane  
property.com



2 Bedroom Cottage £330,000

The Ambrose, 3 Greystone Mews, The Planks, Swindon, SN3 1FJ

mcfarlane  
property.com

## 2 Bedroom Cottage Swindon, Old Town, SN3 1FJ

---

- CHARACTER COTTAGE
  - TWO DOUBLE BEDROOMS
  - ALLOCATED PARKING
  - OPEN PLAN LIVING
  - MODERN FITTED KITCHEN
  - OLD TOWN LOCATION
  - SECURE GATED ENTRY
  - GRADE II LISTED
- 



## Property description

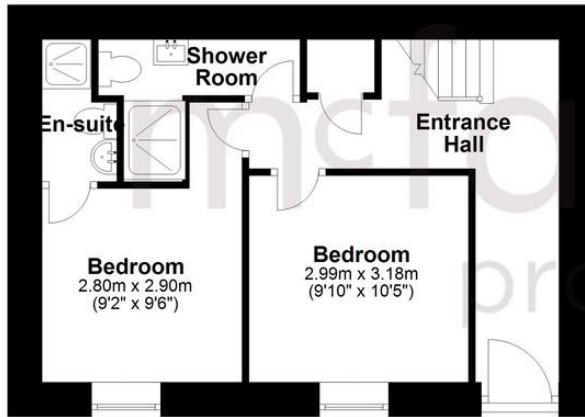
McFarlane Sales & Lettings are delighted to offer this beautiful Grade II listed character cottage situated in a secluded courtyard location close to all the local amenities of Old Town. The property briefly comprises of open plan living room with vaulted and beamed ceiling, modern fitted kitchen with integrated appliances, master bedroom with en-suite, second double bedroom and a further modern shower room to the ground floor. Further benefits include electric heated radiators, allocated parking, and a gated courtyard entrance.



We   
where you  
**LIVE**

### Ground Floor

Approx. 37.1 sq. metres (399.9 sq. feet)



### First Floor

Approx. 37.1 sq. metres (399.9 sq. feet)




Total area: approx. 74.3 sq. metres (799.7 sq. feet)

Our team are friendly, experienced and are all local. They know it better than they do their own living rooms and can help you find what you're looking for because **we love where we live.**

We would be delighted to show you around this property.

**Because every home  
needs a personal touch.**

**If you would like to view this  
property then please get in touch.**

 01793 296880

 [oldtown@mcfarlaneproperty.com](mailto:oldtown@mcfarlaneproperty.com)

[mcfarlaneproperty.com](http://mcfarlaneproperty.com)

**mcfarlane**  
property.com

#### **Cricklade.**

102 High Street  
Cricklade SN6 6AA

 01793 751044

#### **Marlborough.**

106 High Street  
Marlborough SN8 1LT

 01672 514380

#### **Old Town.**

28-30 Wood Street  
Swindon SN1 4AB

 01793 296880

#### **Swindon.**

The Village Centre,  
Redhouse SN25 2FW

 01793 296600

Agents Note: Whilst every care has been taken to prepare these sales particulars, they are for guidance purposes only. All measurements are approximate are for general guidance purposes only and whilst every care has been taken to ensure their accuracy, they should not be relied upon and potential buyers are advised to recheck the measurements