



4 Bedroom Terraced House £375,000

14 Galen View, Old Town, Swindon, SN1 4GF

mcfarlane
property.com

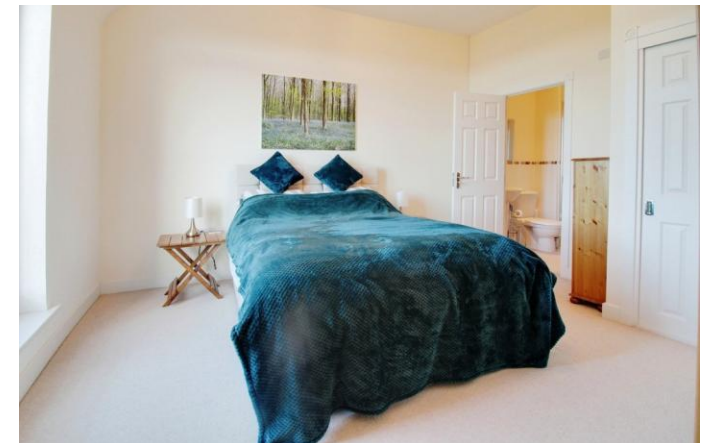
4 Bedroom Terraced House
Swindon, Old Town

- Stunning Far Reaching Views
 - Accommodation Over Three Floors
 - Three Reception Rooms
 - Four double Bedrooms
 - Desirable Location
 - Close to Local Amenities
-



Previously the show home this terraced property is offered to market in excellent order throughout on the outskirts of Old town close to local amenities and well regarded schools.

Accommodation is arranged over three floors comprising three reception rooms, fitted kitchen, four double bedrooms, three bathrooms, utility room and garage.



A fantastically spacious family home with attractive far-reaching views to the front. The property is in excellent order and offers generous accommodation throughout.

GROUND FLOOR

To the ground floor there is a modern fitted kitchen with integrated appliances to include fridge, freezer, dishwasher, electric oven and gas hob. A breakfast bar separates the kitchen and the dining/ family area. Also to the ground floor is a formal dining room/ snug, a utility room with rear access and a cloakroom with basin and WC.

FIRST FLOOR

To the first floor is the generous dual aspect sitting room with Juliette balcony offering far reaching views including a stunning sunset. The master bedroom also benefits from these views, a built in wardrobe and a jack and jill three piece shower room comprising double shower, basin, WC and airing cupboard.

SECOND FLOOR

To the second floor there is the family bathroom and three additional double bedrooms with the guest bedroom benefitting from an en-suite shower room and built in wardrobe.

OUTSIDE

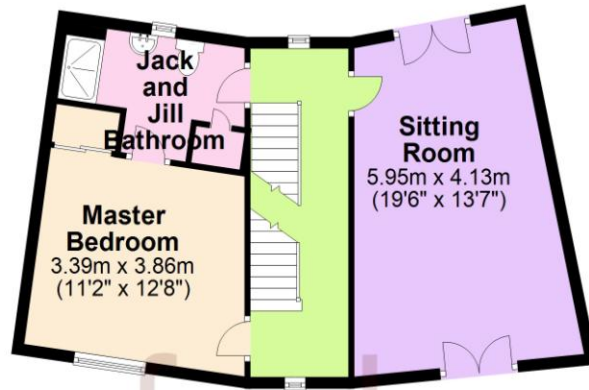
The property is situated on a quiet green to the front with a fully enclosed, low maintenance garden to the rear and side gate leading to the garage and parking.





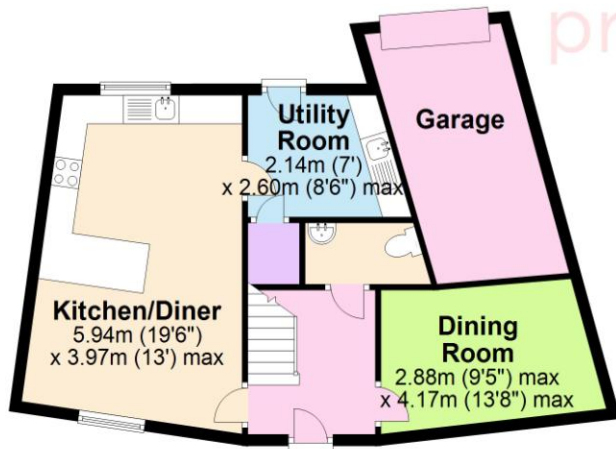
First Floor

Approx. 52.7 sq. metres (567.1 sq. feet)



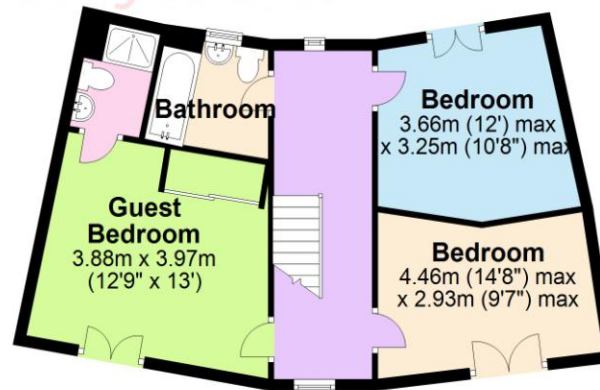
Ground Floor

Approx. 57.1 sq. metres (614.5 sq. feet)



Second Floor

Approx. 53.5 sq. metres (575.6 sq. feet)



Total area: approx. 163.2 sq. metres (1757.2 sq. feet)

We 
where you
LIVE

Our team are friendly, experienced and are all local. They know it better than they do their own living rooms and can help you find what you're looking for because **we love where we live.**

We would be delighted to show you around this property.

Because every home needs a personal touch.

If you would like to view this property then please get in touch.

☎ 01793 296880

✉ oldtown@mcfarlaneproperty.com

mcfarlaneproperty.com

mcfarlane
property.com

Cricklade.

102 High Street
Cricklade SN6 6AA

☎ 01793 751044

Marlborough.

106 High Street
Marlborough SN8 1LT

☎ 01672 514380

Old Town.

28-30 Wood Street
Swindon SN1 4AB

☎ 01793 296880

Swindon.

The Village Centre,
Redhouse SN25 2FW

☎ 01793 296600

Agents Note: Whilst every care has been taken to prepare these sales particulars, they are for guidance purposes only. All measurements are approximate and are for general guidance purposes only and whilst every care has been taken to ensure their accuracy, they should not be relied upon and potential buyers are advised to recheck the measurements