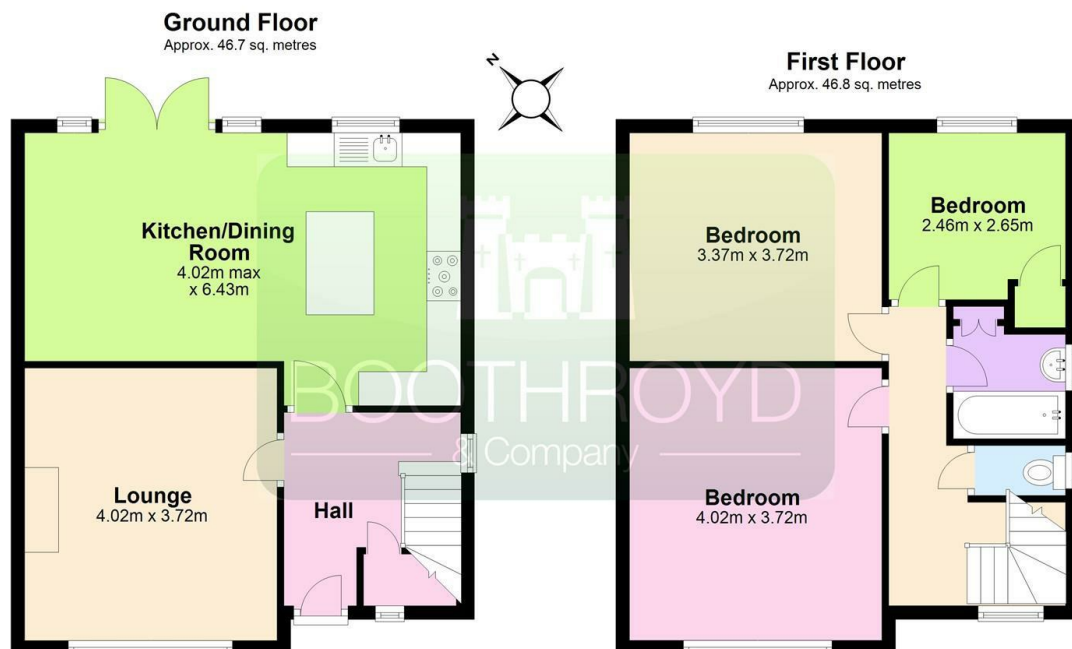




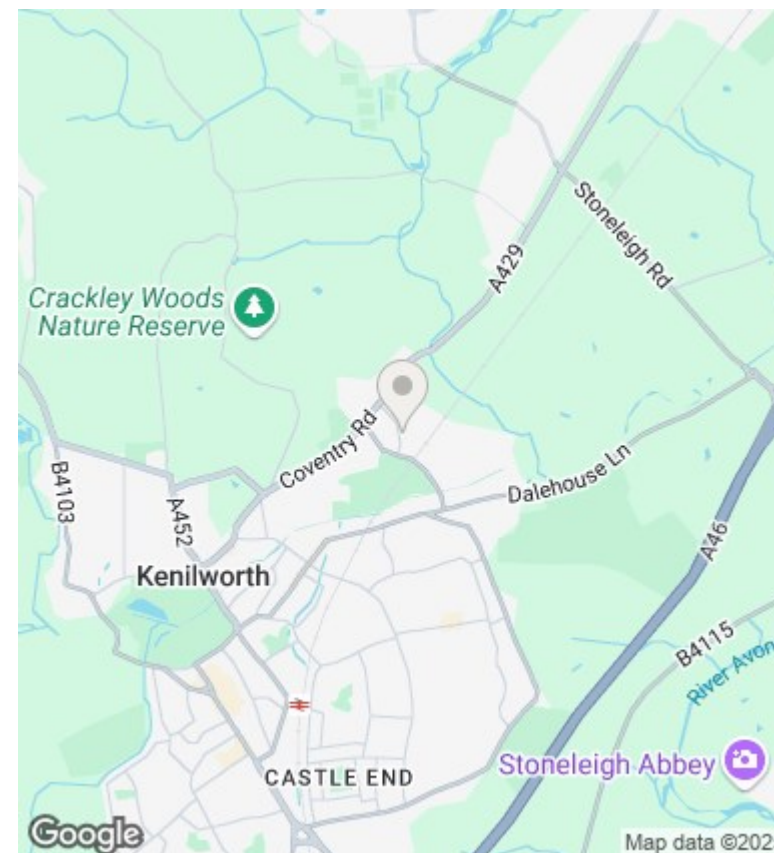
45 Woodland Road, Kenilworth, CV8 2FJ

£1,500 Per Calendar Month

- Three Bedroom Semi-Detached
- Double Glazing And Gas Central Heating
- Warwick District Council Tax Band D
- Available 8th July 2025
- Good Sized Garden
- Driveway and Parking
- Single Garage
- Shaker Style Kitchen With Appliances
- Family Bathroom
- EPC Rating - E



Total area: approx. 93.5 sq. metres



Directions

Viewings

Viewings by arrangement only. Call 01926 857244 to make an appointment.

Council Tax Band

EPC Rating:

E

Energy Efficiency Rating		
	Current	Potential
Very energy efficient - lower running costs		
(92 plus) A		85
(81-91) B		
(69-80) C		
(55-68) D	54	
(39-54) E		
(21-38) F		
(1-20) G		
Not energy efficient - higher running costs		
England & Wales		EU Directive 2002/91/EC