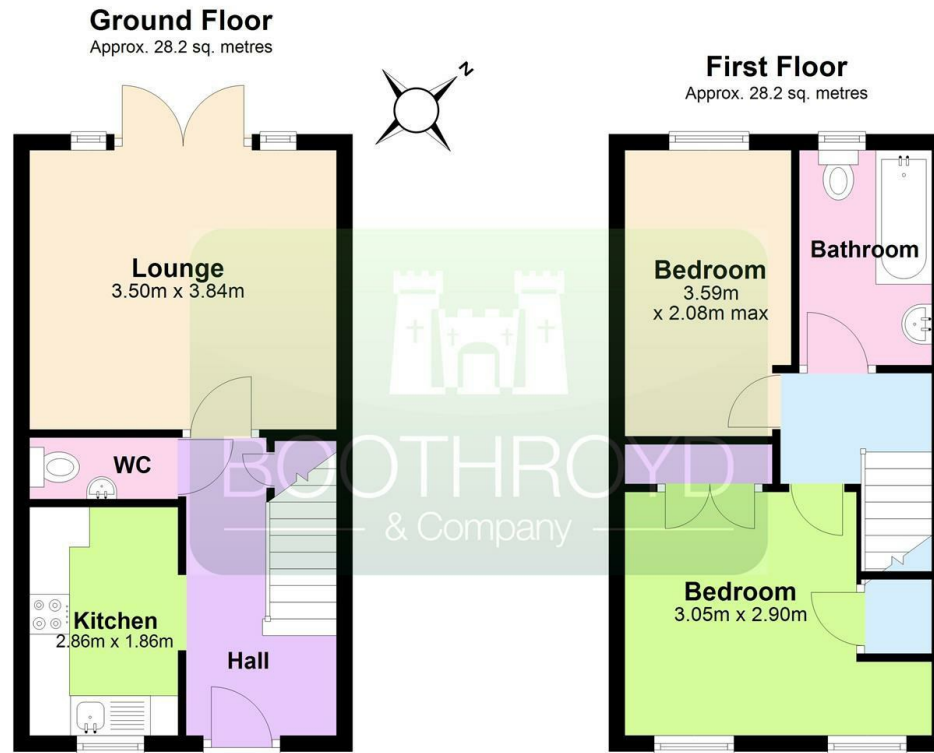




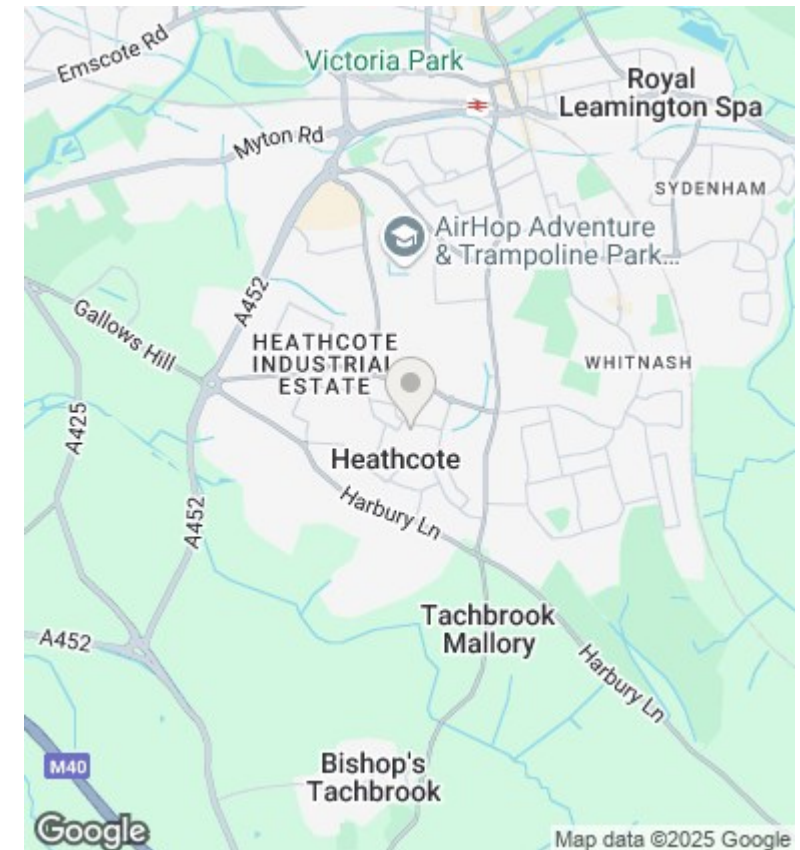
16 Pericles Close, Heathcote, Warwick, CV34 6BN

£1,100 (From) Per Calendar Month

- Modern Two Bedroom Mews House
- EPC Rating C - 74
- Shaker Style Kitchen With Appliances
- Available NOW
- Two Parking Spaces
- Rear Lounge With French Doors
- Bathroom With Electric Shower
- Double Glazing And Gas Central Heating
- Rear Garden And Patio
- Warwick District Council Tax Band B



Total area: approx. 56.4 sq. metres



Directions

Viewings

Viewings by arrangement only. Call 01926 857244 to make an appointment.

Council Tax Band

C

EPC Rating:

C

Energy Efficiency Rating		
	Current	Potential
Very energy efficient - lower running costs		
(92 plus) A		91
(81-91) B		
(69-80) C	74	
(55-68) D		
(39-54) E		
(21-38) F		
(1-20) G		
Not energy efficient - higher running costs		
England & Wales		EU Directive 2002/91/EC