



Wilton Court, Kenilworth

Asking Price £99,950

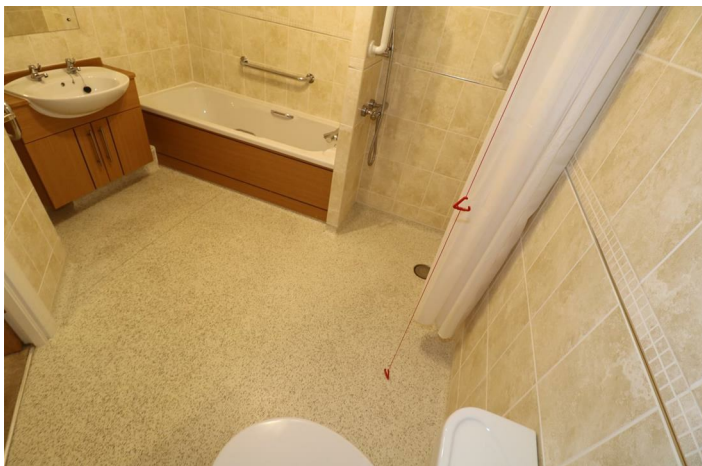
- Later Living Apartment
- 26' South Facing Living Room
- Quality Kitchen & Bath/Wet Room
- Waitress Served Restaurant
- Domestic Assistance Included
- One Large Double Bedroom
- EPC Rating B - 87
- Homeowners Residents Lounge
- 24hr On Site Staffing/Estate Manager
- Warwick District Council Band B

Southbank Road, Kenilworth CV8 1RX

A luxury retirement apartment quality fitted throughout and no onward chain. Communal facilities, waitress service restaurant, lounge and guest suite. Bargain price for a South facing property with use of all communal facilities including one hour of domestic assistance, restaurant, lounge, guest suite and within walking distance of Kenilworth town Centre.



Council Tax Band: B



WILTON COURT

Wilton Court is one of McCarthy and Stone's retirement living plus range and is facilitated to provide its homeowners with extra care, together with a resident estate manager who is on hand to manage the day-to-day running of the development and attend to any queries that arise. Within the service charge homeowners are allocated one hours domestic assistance per week with additional hours at additional costs, there are a range of personal care packages to suit owners requirements which are provided by the on-site CQC registered care team. For security and assurance, the development has 24-hour on-site staffing, secure camera entry system and 24-hour emergency call system provided by a personal pendant within each apartment together with static call points in bathroom and main bedroom. At Wilton Court there is a luxury homeowners lounge which is a superb area for residents to socialise with friends and family and has permanent refreshments. There is a guest suite which has an ensuite shower room, tea and coffee making facilities and television (normally for a fee of £25 per night subject to availability) A major benefit of Wilton Court is the on-site waitress service restaurant with freshly cooked meals provided every day at lunchtime and with additional food being available.

WHAT'S INCLUDED

Covered within the service charge are the water rates, 1 hours domestic assistance per week, 24-hour emergency call system, upkeep of the communal gardens and grounds, repairs and maintenance for interior and exterior communal areas, buildings insurance, contingency fund for internal/external maintenance, communal window cleaning, electricity heating, lighting and power to communal areas all covered within the resident service charge. Residents must meet an age requirement of 70 years or over. Offered for sale at unrepeatabe value for quick sale with waitress service restaurant, homeowner's lounge with television and constant tea and coffee facilities, guest suite, resident's laundry, reading room, mobility scooter store and charging point, function room with computer, personal care packages available from the on-site CQC registered care agency, security entrance with managed reception with daytime staff offering security and assistance

WHATS ON OFFER

This one double bedroom apartment with south facing aspect overlooking activity needs viewing immediately to avoid being disappointed as it will sell quickly at this special price. Offered for sale at unrepeatabe value for money and a quick sale including waitress service restaurant, homeowner's lounge with television and constant tea and coffee facilities, guest suite, resident's laundry, reading room, mobility scooter store and charging point, function room with computer, personal care packages available from the on-site CQC registered care agency, security entrance with managed reception with daytime staff offering security and assistance.

ENTRANCE

Security entry system to inner lobby with immediate access to buggy store with charging points and electric sliding doors to

RECEPTION AREA

Attractive reception area with managers desk and service area leading to communal rooms.

HOMEOWNERS LOUNGE

Appealingly furnished with refreshment bar serving permanent tea and coffee, and access to outside seating areas.

T.V LOUNGE AREA

Wall mounted large screen, comfortable seating and areas for film nights and screening.

RESTAURANT

Waitress service restaurant serving three course lunch every day with on-site home cooked and prepared meals in a sociable, convivial atmosphere.

FUNCTION ROOM

Available for residents use with a computer and ideal for parties and family gatherings and homeowner social events.

LAUNDRY

Laundry for use by the residents with numerous washing machines, tumble dryers and ironing facilities.

GUEST SUITE

For use by guest of homeowners with a charge of £25 per night subject to availability with en-suite shower room, tea and coffee making facilities and TV.

READING ROOM

With well stock library.

CONSERVATORY WALKWAY

Internal link for all round exercise.

LIFT ACCESS TO ALL FLOORS

Purpose built lift with ample space and security measures.

COMMUNAL LANDING

Attractively decorated and furnished with windows, security lighting and fire alarms and private doors to individual apartments.

APARTMENT NO 27

Accessed on the third floor from the lift and an internal staircase to quality front door with spy hole and door bell into

RECEPTION HALL

With neutral fitted carpet and doors leading off, illuminated light switches, smoke detector, door entry system with intercom, and door to

STORAGE ROOM

With useful storage housing the hot water tank and heating system, airing shelving and lighting.

SOUTH FACING LOUNGE/DINING ROOM

25'11" x 10'10"

With full height double glazed windows overlooking the front with constant activity and interest, feature fireplace setting with electric glow effect convection fire, two 3 branch ceiling light fittings, curtains and carpet, air filtration system, TV point, main electric economical heater, part glazed door to kitchen.

FITTED KITCHEN

8'10" x 7'7"

Built on an angle with front facing electrically operated double glazed window with constant activity and interest and being south facing, comprehensive range of units, drawers and work surfaces with integrated appliances including four ring electric

hob with illuminated cooker filter above, oven housing unit at waist height with side opening door to electric oven and grill with microwave oven above, integrated fridge and freezer, sink unit and drainer, kick board fan heater, ceramic tiling, floor tiling, spot light fitting, blind to window.

LARGE DOUBLE BEDROOM

20'9" x 10'1"

Entrance with double built in mirror sliding wardrobe with hanging rail, storage and an ideal DRESSING AREA. Ample space for double/ twin beds, electric wall thermostatic radiator, full height double glazed window with curtains and viol, light fitting, neutral carpet, emergency alarm cord and TV point.

COMBINED BATH /WET ROOM

9'10" x 9'2"

Quality fitted with modern white sanitary ware with panelled bath with hot and cold easy action taps, vanity unit with inset wash hand basin with easy action taps, electric fan heater and electric towel radiator, SEPARATE WET ROOM SHOWER having and held adjustable shower fitment, grab handle rails and non slip flooring and privacy splash curtain, Low level WC.

OUTSIDE GROUNDS

There are attractive communal gardens and grounds with abundant planting, lawns, seating areas and hard landscaping and with electrically operated gates for the main vehicular access to Wilton court from Southbank Road. There is ample parking and designated residents parking.

CAR PARKING

The development operates a parking rental scheme exclusively for homeowners with cars. Spaces can be rented for the year at a fee payable(six monthly subject to availability).

SERVICE CHARGE

Information supplied current until 31/03/2023.

Monthly breakdown-£706.56

weekly-£163.05







Viewings

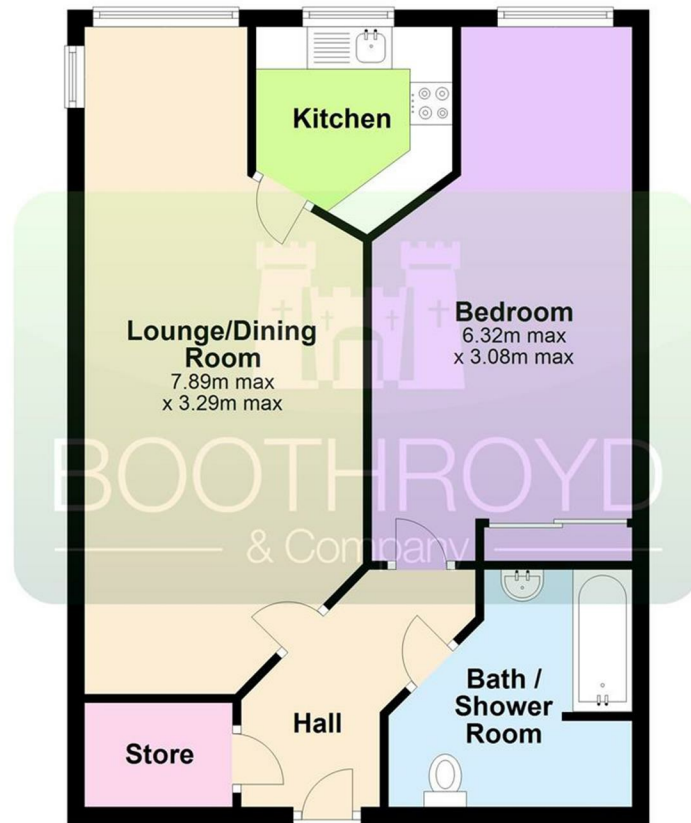
Viewings by arrangement only. Call 01926 857244 to make an appointment.

EPC Rating:

Energy Efficiency Rating		
	Current	Potential
Very energy efficient - lower running costs		
(92 plus) A		
(81-91) B	87	87
(69-80) C		
(55-68) D		
(39-54) E		
(21-38) F		
(1-20) G		
Not energy efficient - higher running costs		
England & Wales		EU Directive 2002/91/EC

Third Floor Flat

Approx. 59.7 sq. metres



Total area: approx. 59.7 sq. metres