



Superbly positioned with stunning views over fields to the rear, is this semi detached cottage offering tremendous potential to extend and modernize.

The property offers entrance porch, entrance hall, dual aspect living room, conservatory with doors to the rear garden, kitchen, refitted bathroom, ground floor wc, dual aspect master bedroom, two further good sized bedrooms. Outside there is a garden to the front, to the the side there is a driveway and detached garage. The rear backs directly onto fields and provides lovely views. Keys held for viewing.



Entrance Porch

Door to side and window to front, storage cupboards, door to:

Entrance Hall

Stairs to first floor, door to:

Dual Aspect Living Room

16' x 12'1 (4.88m x 3.68m)

Window to front and door to rear leading to the conservatory, radiator, fireplace, television & telephone points.



Conservatory

11'1 x 7'9 (3.38m x 2.36m)

Double glazed windows to sides and rear, doors to garden, power points, tiled floor.

Refitted Bathroom

Comprising of panel enclosed bath with mixer tap and shower attachment, folding shower screen, vanity wash hand basin with mixer tap and cupboard under, complimentary wall tiling to full height, heated towel rail, double glazed window to side.



Kitchen

9'8 x 8' (2.95m x 2.44m)

Range of wall and base units, complimentary work surfaces and tiled splash back, inset stainless steel sink/drain, space for fridge/freezer and cooker, extractor fan, two windows to side, door to:



Rear Lobby

door to garden, storage cupboard with window to rear, doors to:

WC

Wc, wash hand basin and tiled splash back, window to rear.

Landing

Window to rear overlooking fields, doors to:

Bedroom One

15'10 x 9'5 (4.83m x 2.87m)

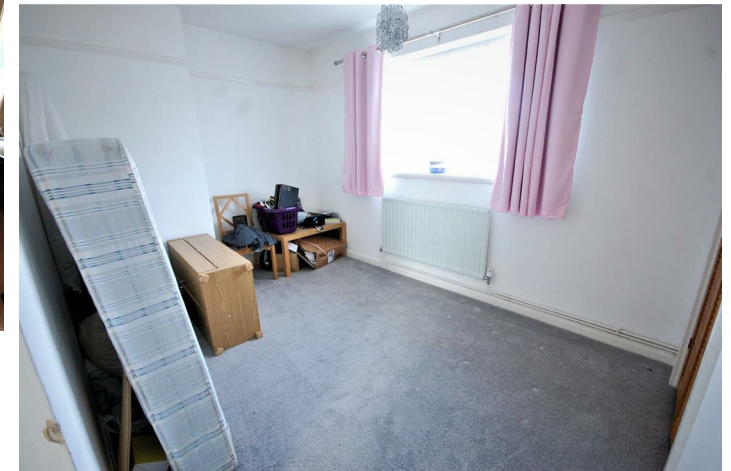
Dual aspect room with window to front and window to rear overlooking fields, radiator, picture rails, television point.



Bedroom Two

12'2 x 11'11 (3.71m x 3.63m)

Window to front, radiator, picture rail.



Bedroom Three

8'9 x 7'2 (2.67m x 2.18m)

Window to rear overlooking fields, radiator, picture rail.

Front Garden

Mainly laid to lawn, mature flowers, shrubs and evergreens.

Driveway

Providing private off street parking for two vehicles, water tap, access to rear garden and to the detached garage.

Detached Garage

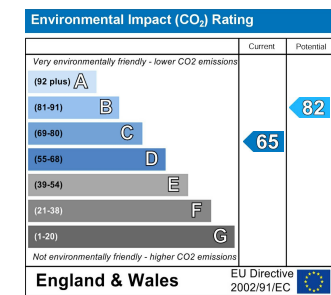
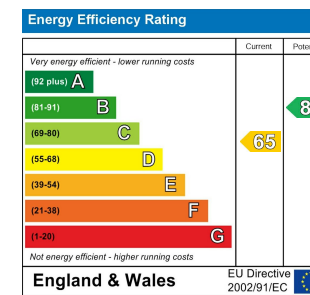
Up and over door, window and door to side.

Rear Garden

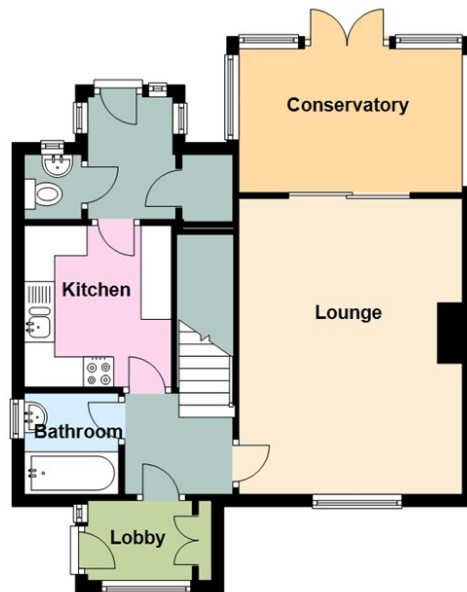
Offering fabulous views over fields to the rear, mainly laid to lawn, mature shrubs and evergreens, various conifer trees and mature bushes, timber shed.



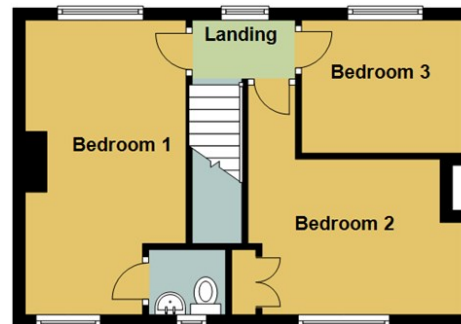




Ground Floor



First Floor



Total area: approx. 85.8 sq. metres (923.3 sq. feet)