



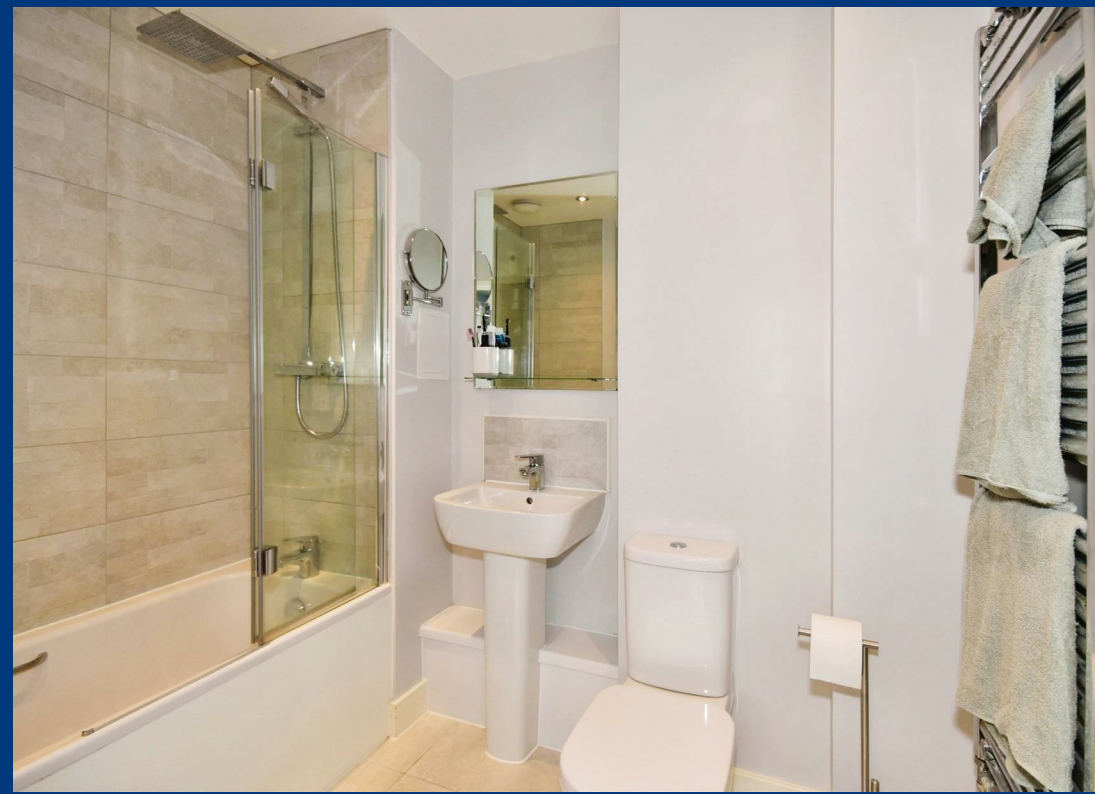
Hickman Avenue, London, E4 9FU





£535,000

Leasehold

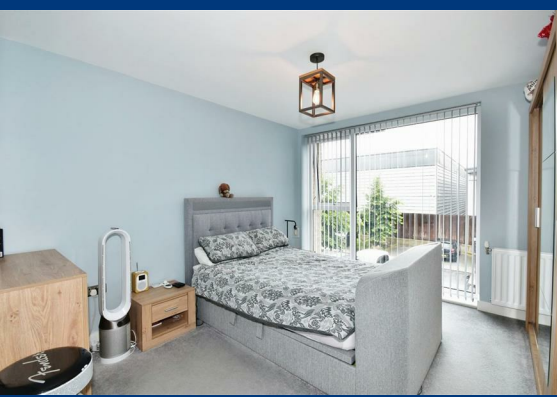


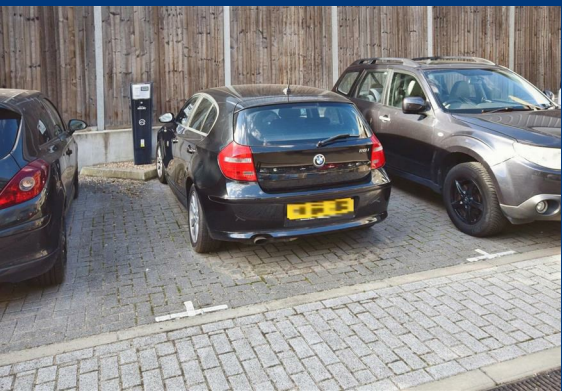
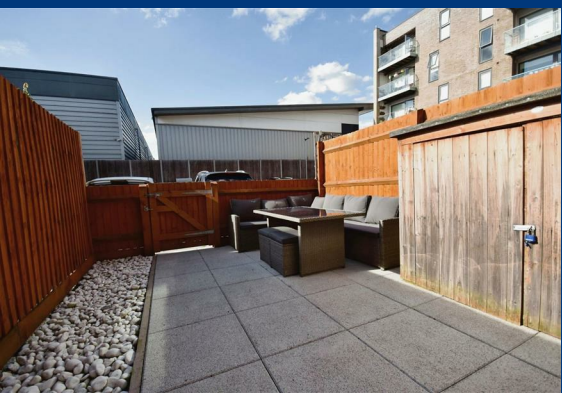
Nestled in the heart of Hickman Avenue, London, this charming maisonette boasts a delightful split-level layout that offers a unique living experience. As you step inside, you are greeted by a cosy reception room, perfect for relaxing or entertaining guests. The property features two generously sized bedrooms, each accompanied by its own ensuite bathroom, providing ultimate comfort and privacy.

Built in 2018, this modern house spans across 1,023 sq ft, offering ample space for all your needs. The highlight of this property is the large garden, a rare find in the bustling city of London. Imagine enjoying a cup of tea in the tranquillity of your own outdoor oasis.

Convenience is key with secure allocated parking, ensuring your vehicle is always safe and easily accessible. Whether you're a young professional looking for a stylish home or a small family in need of a comfortable space, this house caters to all.

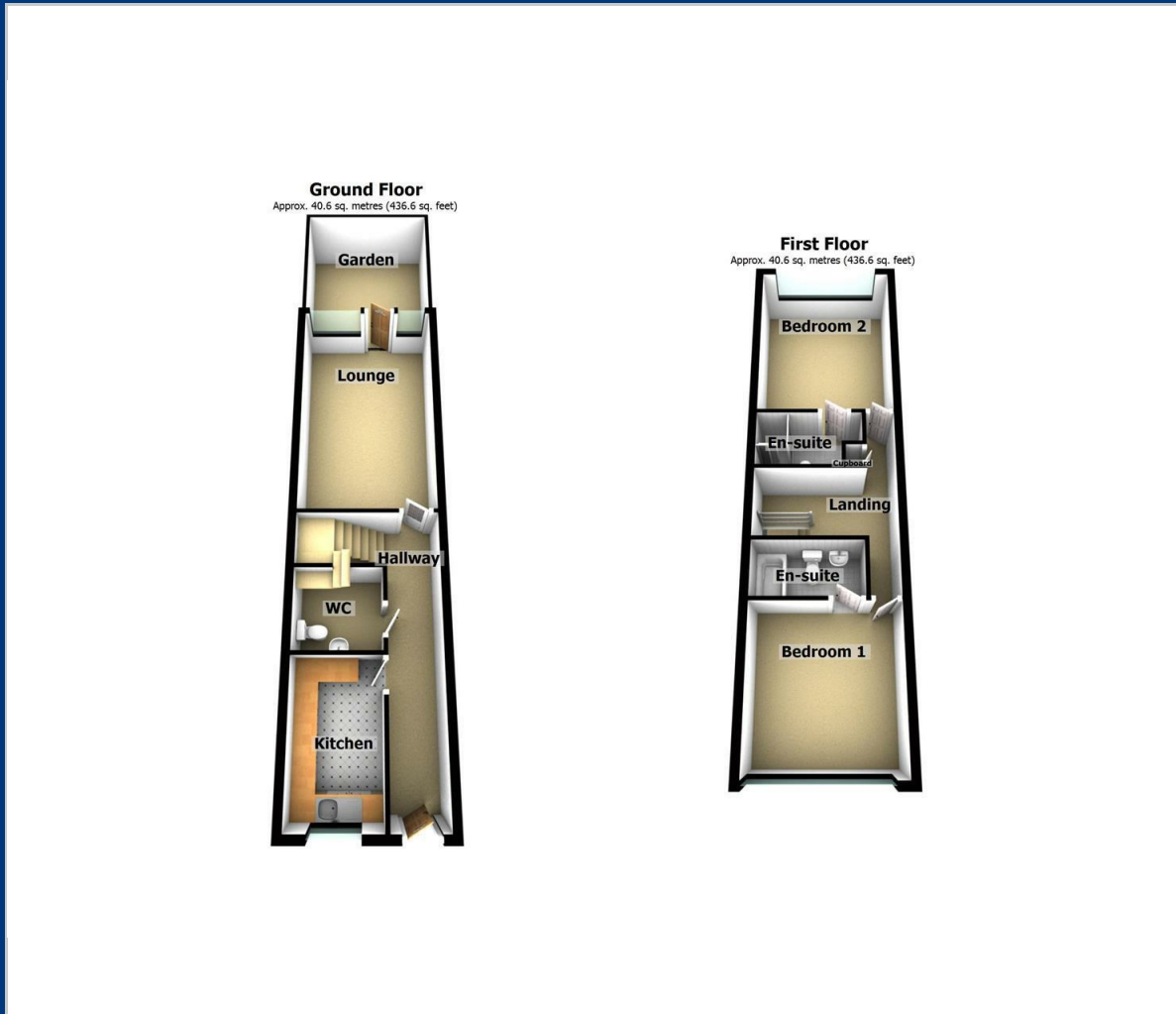
Don't miss the opportunity to make this house your home sweet home in the vibrant and sought after Highams Park area.





🛏️ 2 🚿 2 🛋️ 1 ☰ B

Floor Plan



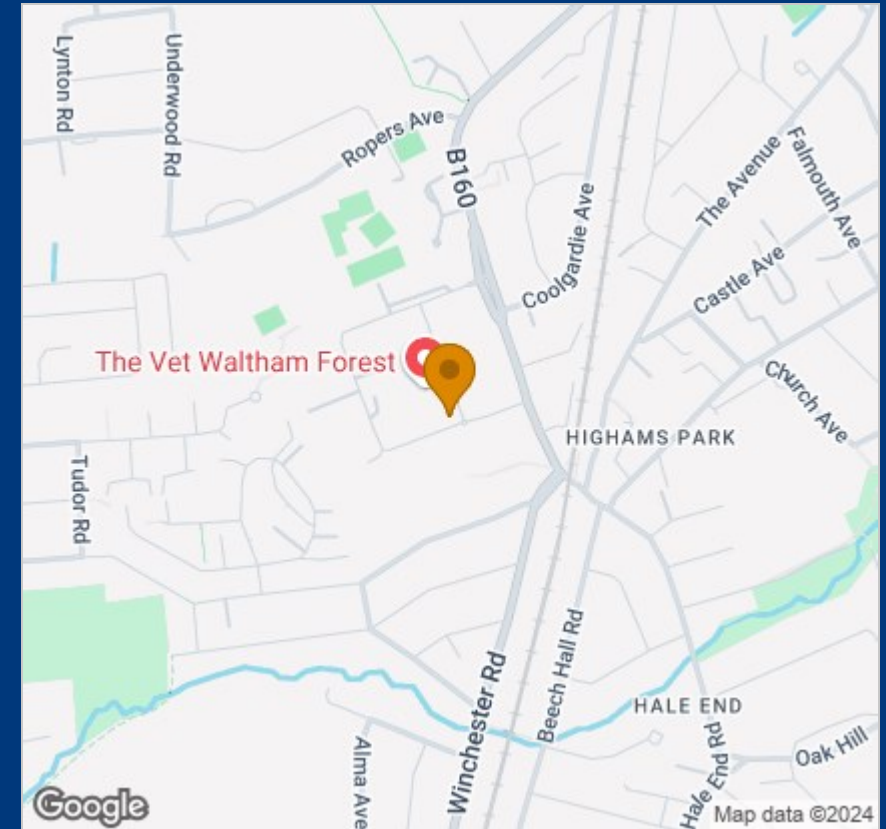
Viewing

Please contact our Buckhurst Hill Office on +4420 8559 2211 if you wish to arrange a viewing appointment for this property or require further information.

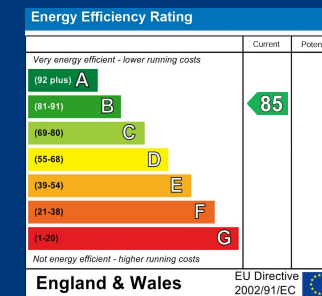
IMPORTANT NOTICE: These particulars, whilst believed to be accurate are set out as a general outline only for guidance and do not constitute any part of an offer or contract. Intending purchasers should not rely on them as statements of representation of fact, but must satisfy themselves by inspection or otherwise as to their accuracy. No person in this firm's employment has the authority to make or give any representation or warranty in respect of the property.

155 Queens Road, Buckhurst Hill, Essex, IG9 5AZ
Tel: +4420 8559 2211 Email: buckhursthill@knightons.co.uk knightons.co.uk

Area Map



Energy Efficiency Graph



Local Authority: London Borough of Waltham Forest
Council Tax Band: D
Service Charge:
Ground Rent: