

# LANES



## Flat 4, 18 Dreyer House Cyber Avenue, Oakgrove, Milton Keynes, Bucks, MK10

Lanes are pleased to offer for rent this modern, one bedroom ground floor apartment in the desirable location of Oakgrove. This property in brief comprises of entrance hall, open plan kitchen/living room, with access to the balcony, double bedroom and bathroom. This property benefits from modern interior throughout, allocated parking for one car and plenty of visitor parking.

There are nearby local amenities which include: Waitrose, Metro Bank and Costa Coffee. Alternatively you can head into the centre of Milton Keynes for an abundance of shops, restaurants and leisure facilities, with something for everyone to enjoy. The property is within easy access of the M1 as well as being within walking distance to excellent schooling at all levels. Available end of November, Professionals Only, Council Tax Band B

- One Bedroom Apartment
- Allocated Parking
- Located In Oakgrove
- Council Tax Band B
- White Goods
- Hard Flooring Throughout
- Available End Of November
- Balcony
- Field Views
- Professionals Only

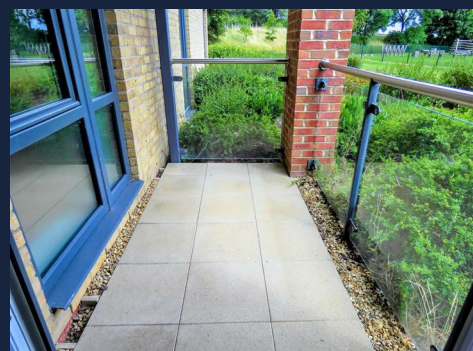
## £1,050

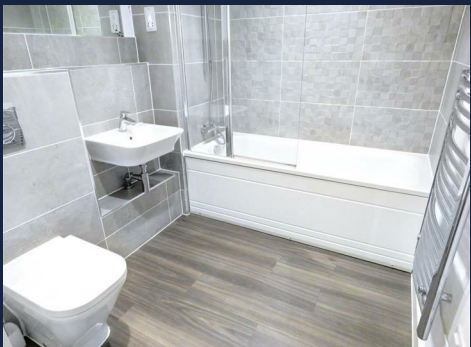
# Flat 4, 18 Dreyer House Cyber Avenue, Oakgrove, Milton Keynes, Bucks MK10 0T7

## Marketing information

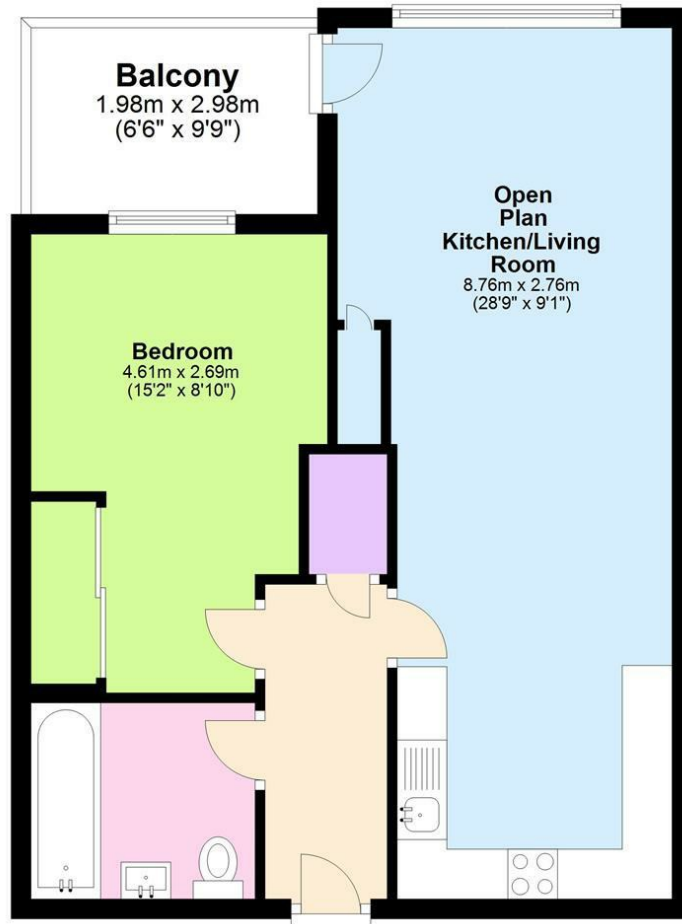
Lanes Sales and Lettings are a member of The Property Ombudsman Redress Scheme. Contact 01722 333306

Tenants deposit are registered with the Tenants Deposit Scheme. Contact 0300 037 1000





## Ground Floor



Energy Efficiency Rating		
	Current	Potential
Very energy efficient - lower running costs		
(92 plus) <b>A</b>		
(81-91) <b>B</b>		
(69-80) <b>C</b>		
(55-68) <b>D</b>		
(39-54) <b>E</b>		
(21-38) <b>F</b>		
(1-20) <b>G</b>		
Not energy efficient - higher running costs		
<b>England &amp; Wales</b>	EU Directive 2002/91/EC	

Environmental Impact (CO <sub>2</sub> ) Rating		
	Current	Potential
Very environmentally friendly - lower CO <sub>2</sub> emissions		
(92 plus) <b>A</b>		
(81-91) <b>B</b>		
(69-80) <b>C</b>		
(55-68) <b>D</b>		
(39-54) <b>E</b>		
(21-38) <b>F</b>		
(1-20) <b>G</b>		
Not environmentally friendly - higher CO <sub>2</sub> emissions		
<b>England &amp; Wales</b>	EU Directive 2002/91/EC	