

Hellards



At home in Alresford

19 East Street

ALRESFORD, HAMPSHIRE, SO24 9EQ

Offers Over £400,000

- Charming Grade II Listed Period House
- Convenient Town Centre Location
- Three Bedrooms and Two Shower Rooms
- Large Sitting Room and Kitchen/Dining Room
- Low-Maintenance, Private Courtyard Garden
- No Onward Chain

A charming double fronted Georgian house, conveniently located for the shops and facilities in the town centre. The property is ideal for entertaining and gatherings, with its generously proportioned, beamed sitting room and a large kitchen/dining room. There are three bedrooms, two shower rooms, a cellar, and a pretty courtyard garden. As is often the case with period homes in the town centre, there is no parking provision at the property. Permit car parking is available at the station and other car parks within the town. There is no onward chain.

The house is entered from East Street with the front door opening to a hallway with a further door to the large sitting room, which features bay windows, an exposed brick wall and oak beams. The dining room has been combined with the kitchen and has built-in kitchen units and drawers, an island unit and a fitted dresser in the dining room. An inner lobby allows access to a shower room which doubles as a cloakroom and utility. Beyond is a garden/boot room and the courtyard garden itself. The cellar has been 'tanked' and appears to be fairly dry.





Upstairs, there is a substantial landing with space for a study area. There are several built in wardrobe/cupboards and an airing cupboard housing the hot water cylinder and boiler. The main bedroom has a fireplace and alcove storage. The second bedroom overlooks East Street, whilst the third bedroom overlooks the garden. There is a modern shower room with a large walk-in glass shower enclosure.

Outside to the rear is the delightful courtyard garden, which has been designed to be low-maintenance and is surrounded by brick walling and raised beds.

Alresford is a beautiful Georgian town known for its variety of independent shops, restaurants and inns located in stunning surroundings on the edge of the South Downs National Park. Attractions include the Watercress steam railway, schools for infant, junior and secondary education, several churches and an active and inclusive community. Highlights in the calendar include the annual Watercress Festival in May and the Agricultural Show in September. The cathedral city of Winchester is about 7 miles away and there is easy access to the south coast, the midlands and London via the road network. There is also mainline rail access to London from both Winchester and Alton. Southampton airport is only about half an hour away by car.



SERVICES

We understand that mains water, electricity, gas and drainage services are connected.

LOCAL AUTHORITY INFORMATION

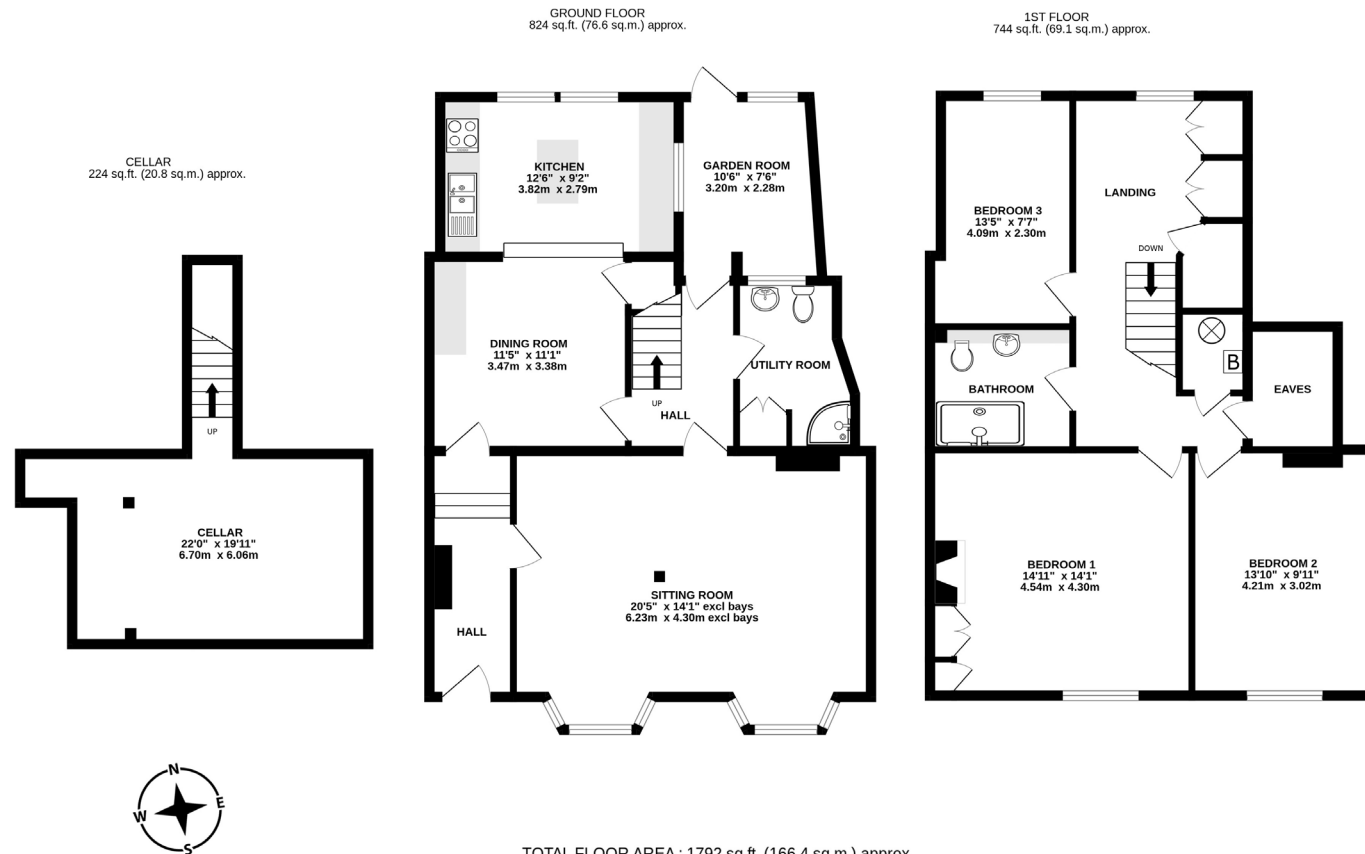
East Hampshire District Council
Council Tax Band: F

DIRECTIONS

From the centre of town, proceed along East Street. The property will be found a little way along on the left hand side.



An EPC report is not required as the building is listed.



TOTAL FLOOR AREA : 1792 sq.ft. (166.4 sq.m.) approx.

Whilst every attempt has been made to ensure the accuracy of the floorplan contained here, measurements of doors, windows, rooms and any other items are approximate and no responsibility is taken for any error, omission or mis-statement. This plan is for illustrative purposes only and should be used as such by any prospective purchaser. The services, systems and appliances shown have not been tested and no guarantee as to their operability or efficiency can be given.
Made with Metropix ©2023

No. 11 Broad Street, Alresford, Hampshire, SO24 9AR
01962 736333
sales@hellards.co.uk | hellards.co.uk

IMPORTANT: we would like to inform prospective purchasers that these sales particulars have been prepared as a general guide only. A detailed survey has not been carried out, nor the services, appliances and fittings tested. Room sizes should not be relied upon for furnishing purposes and are approximate. If floor plans are included, they are for guidance only and illustration purposes only and may not be to scale. If there are any important matters likely to affect your decision to buy, please contact us before viewing the property.

