

Hellards



At home in Alresford

15 Wayfarer Place, The Dean

ALRESFORD, HAMPSHIRE, SO24 9FT

Offers In Region Of £295,000

- Six Months Service Charge Included
- Bright and Airy First Floor Apartment
- Close to Shops and Facilities in the Centre of Alresford
- Lift to all Floors and On-Site Facilities
- Residents' Lounge, Restaurant, Salon and Laundry
- On-Site Staff and Assistance Available
- No Onward Chain

A bright and airy first floor apartment with a balcony in a luxury development for the over 70's. Wayfarer Place is centrally located in the town, being just a few minutes' walk from the shops and facilities in the centre of Alresford. On-site facilities include a residents' lounge and restaurant, a hair salon and laundry, and a guest suite, which can be used by family and friends when staying over. There are on-site staff, parking, a lift to all floors, wheelchair access, and a 24/7 call system.

Built by McCarthy & Stone, and only completed in November 2019, this is a unique opportunity for someone wanting to retire into the centre of the town. The property is offered for sale with the benefit of no onward chain.

From the spacious reception area there is access to the residents' lounge and restaurant. Lifts and stairs provide access to the apartment, which is on the first floor.

The private front door opens to an entrance hall, where there is a large airing/storage cupboard.





The spacious double bedroom features a sizeable walk-in wardrobe and an en-suite shower/wet room. The well-proportioned sitting/dining room features a balcony, where there is ample room for a small table and chairs. The kitchen is fitted with wall, base and drawer units with worktops and integrated appliances.

Alresford is a beautiful Georgian town known for its variety of independent shops, restaurants and inns located in stunning surroundings on the edge of the South Downs National Park. Attractions include the Watercress steam railway, the Millennium river walk, several churches and an active and inclusive community. Highlights in the calendar include the annual Watercress Festival in May and the Agricultural Show in September. The cathedral city of Winchester is about 7 miles away and there is easy access to the south coast, the midlands and London via the road network. There is also mainline rail access to London from both Winchester and Alton. Southampton airport is only about half an hour away by car.

LEASE INFORMATION

Commencing: 2018

Lease period: 99 years

Years Remaining: 95

Service Charge: £720 per month

Covering cleaning and heating of common parts, grounds maintenance, upkeep of building/buildings insurance/sinking fund, water and drainage.

SERVICES

We understand that all mains services are connected.

LOCAL AUTHORITY INFORMATION

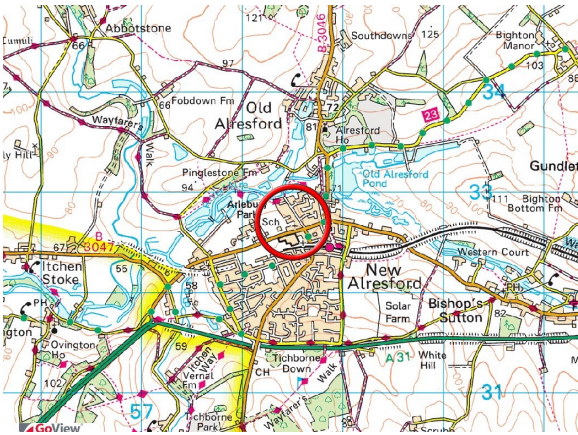
Winchester City Council

Council Tax Band: B

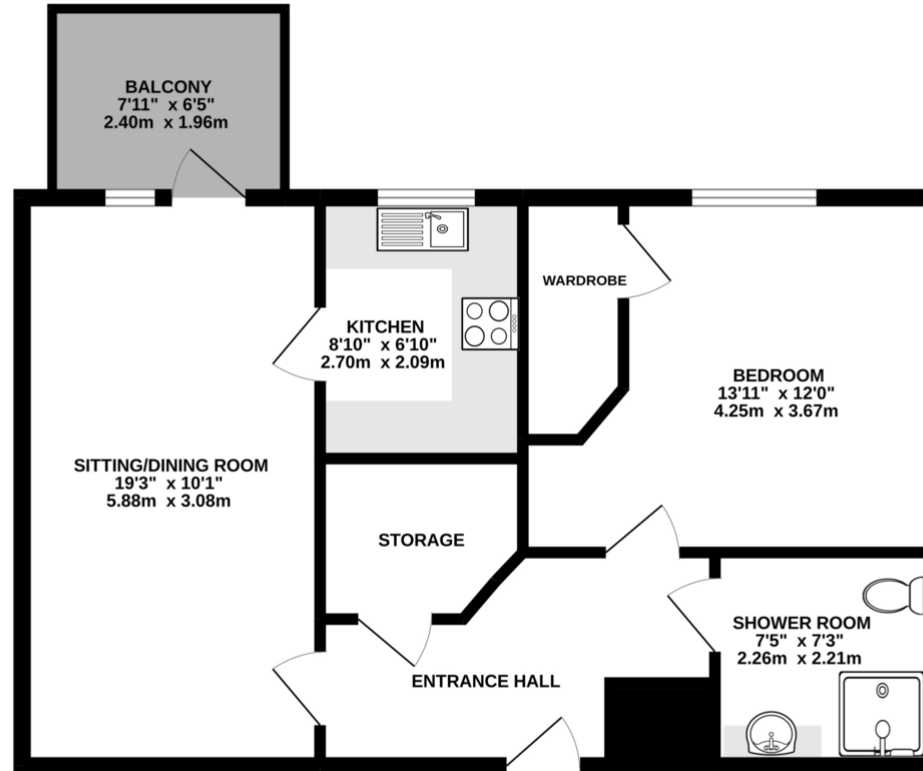


DIRECTIONS

From our office in the centre of the town, proceed down West Street in the direction of Winchester. At the crossroads at the bottom of West Street, turn right into The Dean. Wayfarer Place will be found a short distance along on the left hand side.



FIRST FLOOR
588 sq.ft. (54.6 sq.m.) approx.



Energy Efficiency Rating		Current	Potential
Very energy efficient - lower running costs			
(92+)	A	89	89
(81-91)	B		
(69-80)	C		
(55-68)	D		
(39-54)	E		
(21-38)	F		
(1-20)	G		
Not energy efficient - higher running costs			
England & Wales		EU Directive 2002/91/EC	

WWW.EPC4U.COM

No. 11 Broad Street, Alresford, Hampshire, SO24 9AR

01962 736333

sales@hellards.co.uk | hellards.co.uk

IMPORTANT: we would like to inform prospective purchasers that these sales particulars have been prepared as a general guide only. A detailed survey has not been carried out, nor the services, appliances and fittings tested. Room sizes should not be relied upon for furnishing purposes and are approximate. If floor plans are included, they are for guidance only and illustration purposes only and may not be to scale. If there are any important matters likely to affect your decision to buy, please contact us before viewing the property.

TOTAL FLOOR AREA : 588 sq.ft. (54.6 sq.m.) approx.

Whilst every attempt has been made to ensure the accuracy of the floorplan contained here, measurements of doors, windows, rooms and any other items are approximate and no responsibility is taken for any error, omission or mis-statement. This plan is for illustrative purposes only and should be used as such by any prospective purchaser. The services, systems and appliances shown have not been tested and no guarantee as to their operability or efficiency can be given.

Made with Metropix ©2022

