

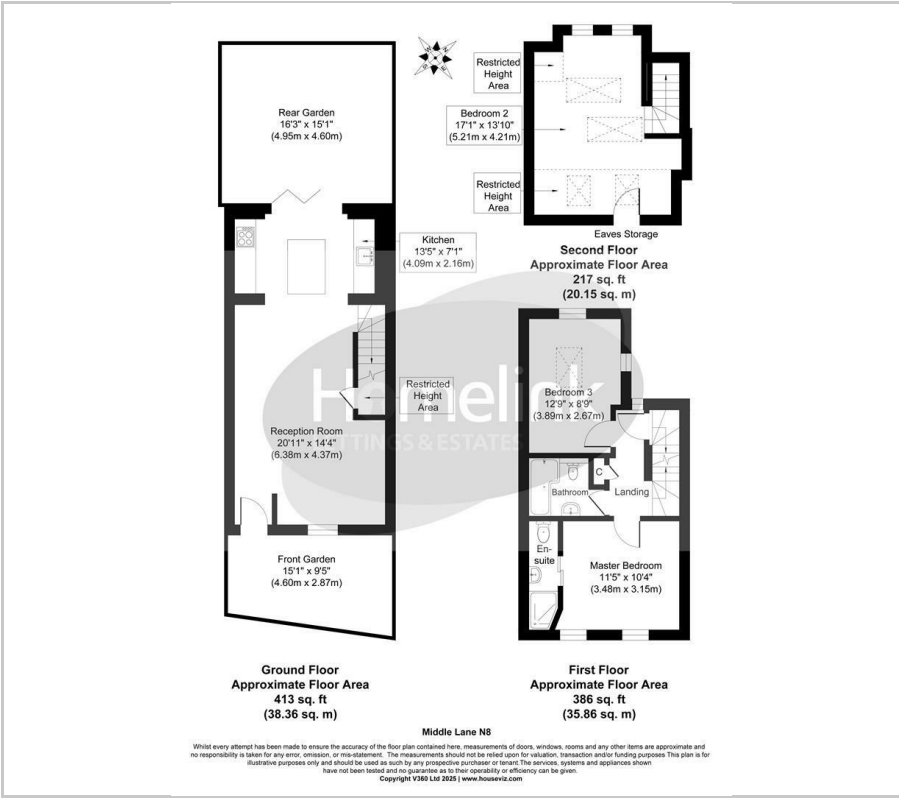


Middle Lane, Crouch End, N8

£3,650 PCM



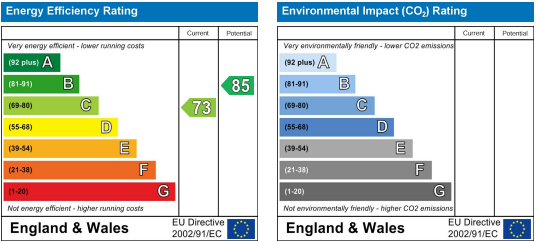
Floor Plan



Area Map



Energy Efficiency Graph



Viewing

Please contact our Homelink Lettings & Estates Office on 0208 882 2112 if you wish to arrange a viewing appointment for this property or require further information.

- Three bedroom end of terrace house
- Private rear garden
- Available from the 18th of October
- Close to Crouch End shops
- Unfurnished
- Arranged over three floors
- Modern vibe throughout
- En-suite in master bedroom
- Ideal for working professional's
- Must See!

Nestled in the vibrant heart of Crouch End, this charming three-bedroom end of terrace house offers a delightful blend of modern living and period character. Spanning an impressive 1,055 square feet, the property is arranged over three well-proportioned floors, providing ample space for both relaxation and entertaining.

Upon entering, you are greeted by a welcoming reception room that exudes warmth and charm, perfect for unwinding after a long day. The well-designed layout includes a master bedroom complete with an en-suite bathroom, ensuring privacy and convenience for the occupants. The additional two bedrooms are generously sized, making them ideal for family members or guests.

The property boasts two bathrooms in total, catering to the needs of busy professionals or families alike. The location on Middle Lane places you within easy reach of Crouch End's eclectic mix of shops, cafes, and restaurants, making it a desirable spot for those who appreciate a lively community atmosphere. With its proximity to excellent transport links, this property is particularly suited for working professionals seeking a comfortable and stylish residence in one of North London's most sought-after areas.

Haringey C/Tax Band - D  
2025/26 C/Tax - £2,207.94



These particulars, whilst believed to be accurate are set out as a general outline only for guidance and do not constitute any part of an offer or contract. Intending purchasers should not rely on them as statements of representation of fact, but must satisfy themselves by inspection or otherwise as to their accuracy. No person in this firm's employment has the authority to make or give any representation or warranty in respect of the property.

Homelink Lettings and Estates  
62 Chase Side, London N14 5PA  
0208 882 2112 [homelink.co.uk](http://homelink.co.uk)



Registered name & office: Homelink Residential Limited T/A Homelink Lettings and Estates, 62 Chase Side, London N14 5PA Company No. 4370970 VAT No. 975 9247 61