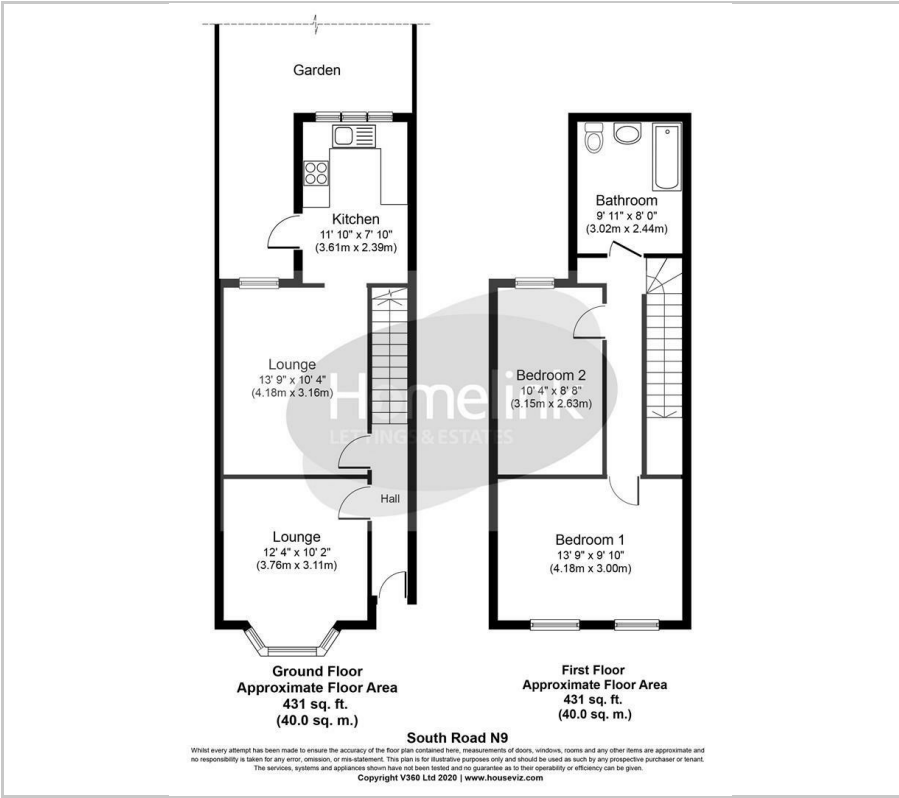




South Road, Edmonton, N9

£2,100 Per Month

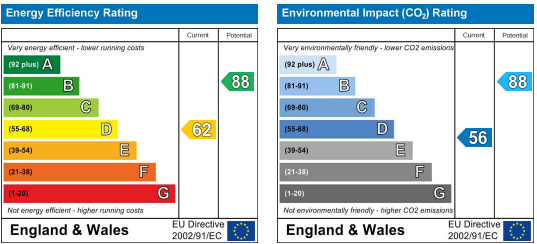
Floor Plan



Area Map



Energy Efficiency Graph



Viewing

Please contact our Homelink Lettings & Estates Office on 0208 882 2112 if you wish to arrange a viewing appointment for this property or require further information.

- Two Bedroom Terraced House
- Modern Fitted Kitchen
- Two Receptions
- Wooden Flooring
- Gas C/H + D/Glazing
- Private Rear Garden
- Close to Edmonton Station
- Close to Local shops
- Enfield C/Tax Band - C
- 2025/26 C/Tax - £1,923.57

Homelink Lettings & Estates are delighted to offer for rent this well presented recently refurbished three bedroom mid terrace property. the property offers an array of desirable features such as: modern fully kitchen, wooden effect laminate flooring throughout the property, three piece bathroom suite, private rear garden offering great patio space, gas central heating and double glazing throughout.

Great location with Edmonton Green station situated a five minutes walk away from the property which will give you direct access into London's city centre. Also ideal for young families looking to settle in the Edmonton area with St Edmunds Roman Catholic Primary School.

Please call Homelink Lettings & Estates to speak with one of our friendly lettings team members today. Early viewings recommended to avoid disappointment.

*AGENTS NOTE: Photos shown were taken before current tenants occupation.



These particulars, whilst believed to be accurate are set out as a general outline only for guidance and do not constitute any part of an offer or contract. Intending purchasers should not rely on them as statements of representation of fact, but must satisfy themselves by inspection or otherwise as to their accuracy. No person in this firms employment has the authority to make or give any representation or warranty in respect of the property.

Homelink Lettings and Estates
62 Chase Side, London N14 5PA
0208 882 2112 homelink.co.uk

