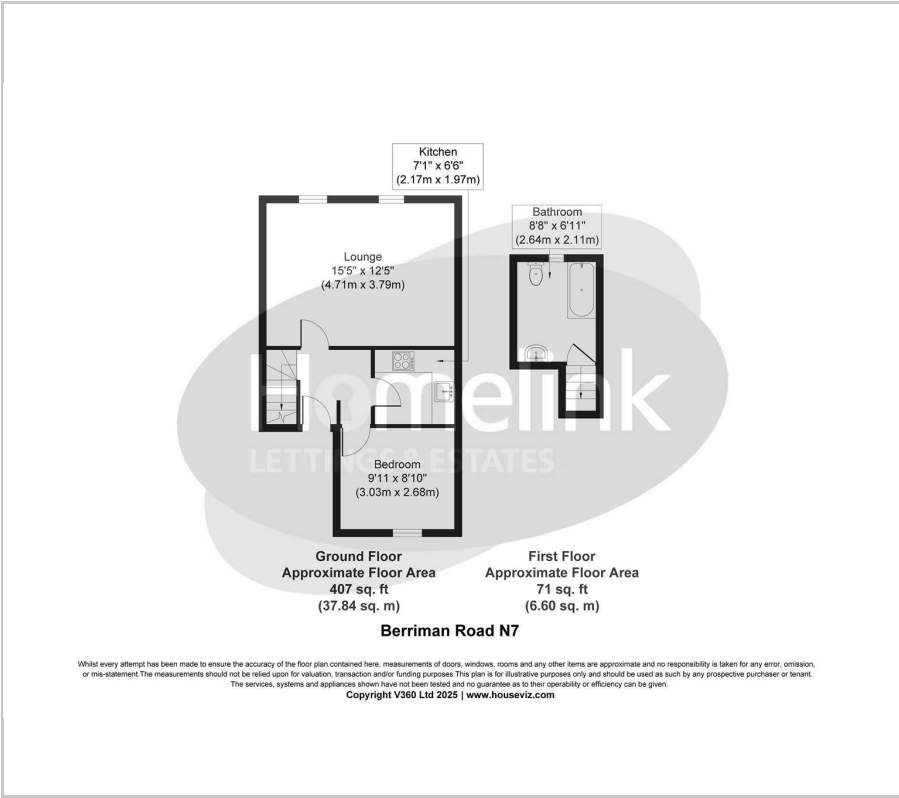




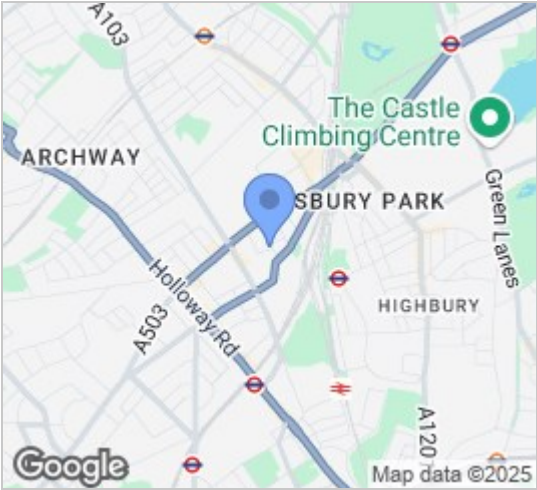
Berriman Road, Holloway, N7

£1,650

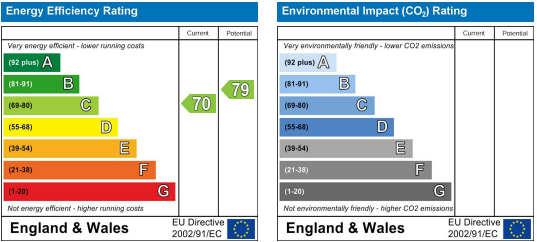
Floor Plan



Area Map



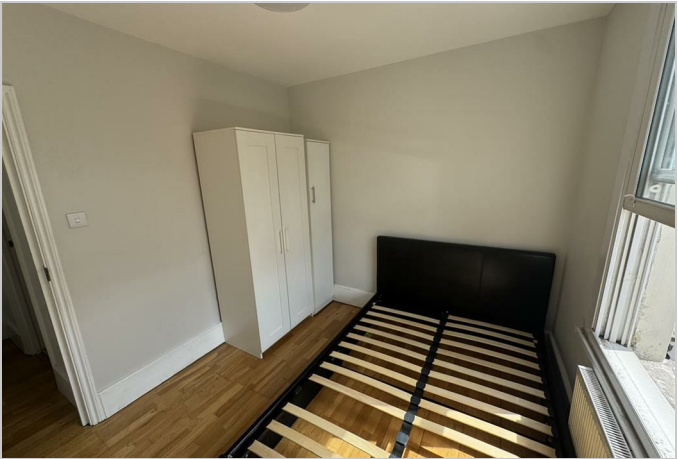
Energy Efficiency Graph



Viewing

Please contact our Homelink Lettings & Estates Office on 0208 882 2112 if you wish to arrange a viewing appointment for this property or require further information.

- One bedroom property
- Close to Finsbury Park station
- Split level property
- Available now
- Laminate flooring
- First floor property
- Ideal for working professionals
- Fully fitted kitchen including white goods
- Fully tiled bathroom
- Council tax band - D - Islington council - £2,011.82



Nestled on Berriman Road in the vibrant city of London, this charming one-bedroom flat for rent offers a perfect blend of comfort and convenience. Spanning an inviting 506 square feet, this first-floor property is ideal for working professionals seeking a modern living space in a bustling urban environment.

Upon entering, you will find a well-proportioned reception room that serves as a welcoming area for relaxation or entertaining guests. The flat features a spacious bedroom, providing a tranquil retreat after a long day. The bathroom is thoughtfully designed, ensuring both functionality and style.

One of the standout features of this property is its prime location, just a stone's throw away from Finsbury Park station. This excellent transport link allows for easy access to central London and beyond, making it an ideal choice for those commuting to work or exploring the city.

Available for immediate occupancy, this flat presents a wonderful opportunity for anyone looking to embrace the London lifestyle. With its appealing layout and proximity to local amenities, this property is not to be missed. Whether you are a young professional or a couple, this flat offers a delightful living experience in one of London's most sought-after areas.

Islington C/Tax Band - D
2025/26 C/Tax - £2,011.82

These particulars, whilst believed to be accurate are set out as a general outline only for guidance and do not constitute any part of an offer or contract. Intending purchasers should not rely on them as statements of representation of fact, but must satisfy themselves by inspection or otherwise as to their accuracy. No person in this firm's employment has the authority to make or give any representation or warranty in respect of the property.

Homelink Lettings and Estates
62 Chase Side, London N14 5PA
0208 882 2112 [homelink.co.uk](https://www.homelink.co.uk)

