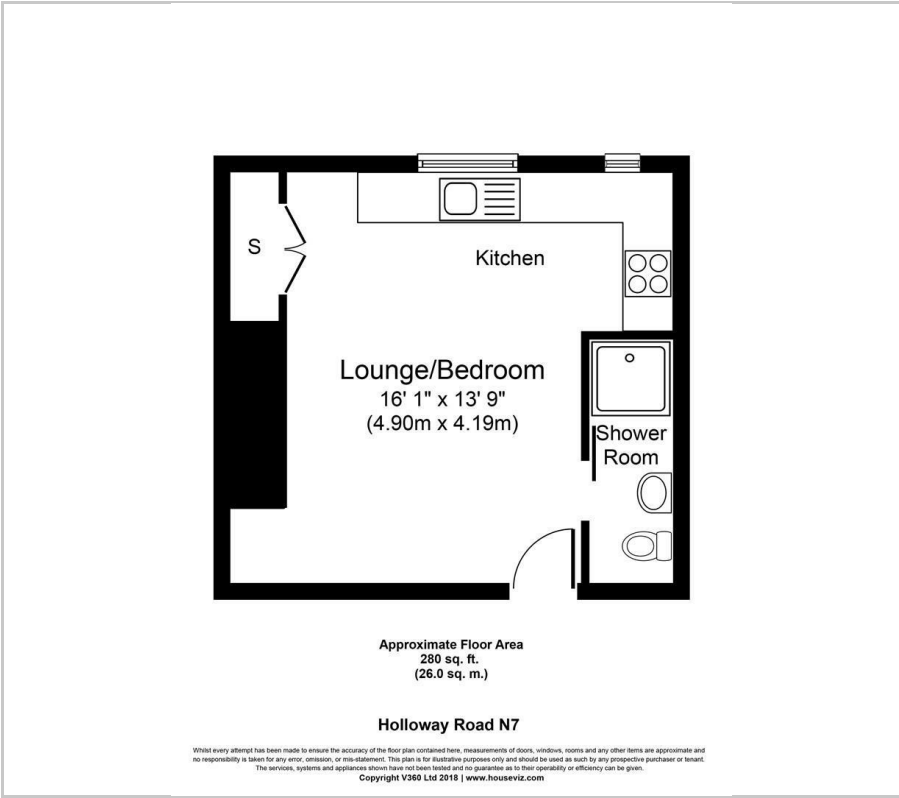




Holloway Road, London, N7

£1,150 PCM

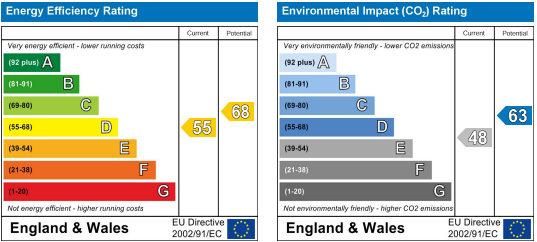
Floor Plan



Area Map



Energy Efficiency Graph



Viewing

Please contact our Homelink Lettings & Estates Office on 0208 882 2112 if you wish to arrange a viewing appointment for this property or require further information.

- Studio Flat
- Top Floor
- En-Suite Shower
- Short Walk to Holloway Tube
- Close to Shops
- Self-Contained
- Fitted Kitchen
- Double Glazed
- Great View
- Ideal for Professional

**\*\*Great Location\*\*** Homelink Lettings and Estates offer for rent this spacious fully self-contained top floor Studio flat.

The property benefits from laminate flooring , double glazing, electric heating, washing machine and fully tiled shower room. . The flat is conveniently located close to all amenities, shops, cafés, restaurants and a short walk to all local transport links including Holloway Road underground stations.

To arrange your viewing please call and speak to one of our friendly lettings team on 020 8882 2112.

Islington Council Tax Band 'A' - £1,341.21 per annum



These particulars, whilst believed to be accurate are set out as a general outline only for guidance and do not constitute any part of an offer or contract. Intending purchasers should not rely on them as statements of representation of fact, but must satisfy themselves by inspection or otherwise as to their accuracy. No person in this firms employment has the authority to make or give any representation or warranty in respect of the property.

Homelink Lettings and Estates  
62 Chase Side, London N14 5PA  
0208 882 2112 [homelink.co.uk](http://homelink.co.uk)

