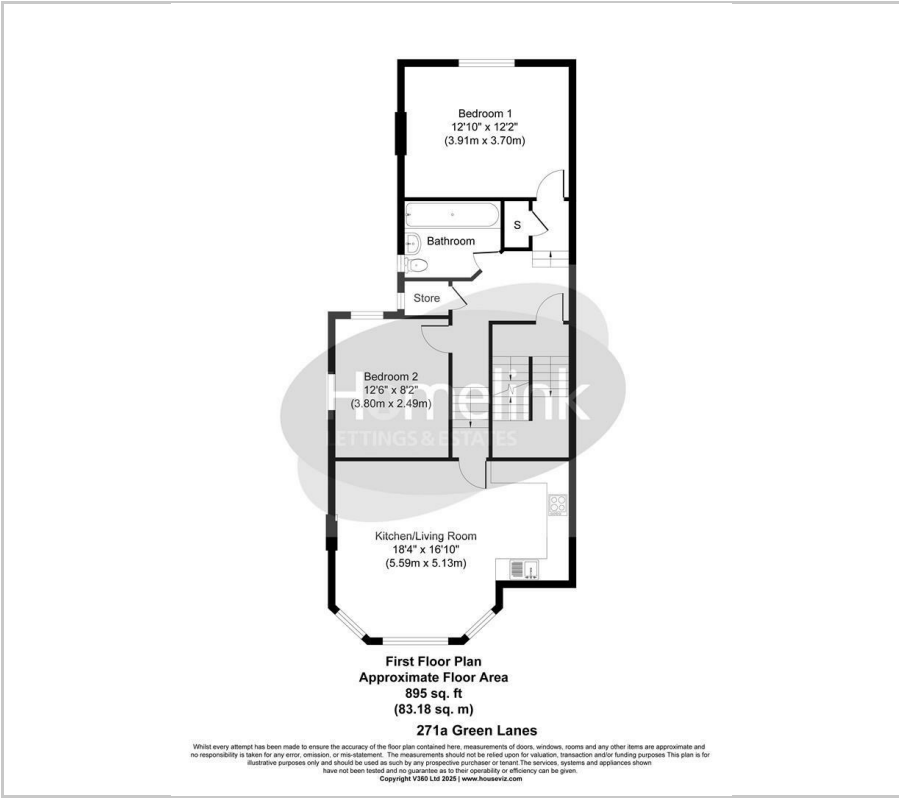




Green Lanes, Palmers Green

£1,900 Per Calendar Month

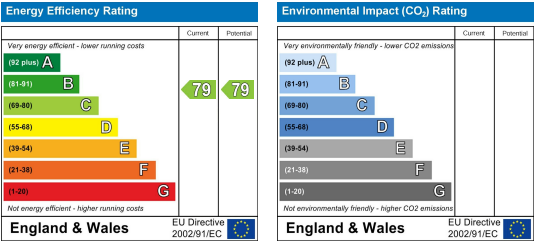
Floor Plan



Area Map



Energy Efficiency Graph



Viewing

Please contact our Homelink Lettings & Estates Office on 0208 882 2112 if you wish to arrange a viewing appointment for this property or require further information.

- First floor property
- Newly refurbished throughout
- Newly installed three piece family bathroom
- Close to local shops and restaurants
- Available End of June 2025
- Two bedroom flat
- Newly installed kitchen with quartz worktops
- Close to Palmers Green station
- Rare opportunity & ideal for working professional's
- Must be seen!



Nestled in the vibrant area of Green Lanes, Palmers Green, this newly refurbished two-bedroom flat offers a delightful living experience. Situated on the first floor, the property boasts a well-designed layout that includes a comfortable reception room, perfect for relaxation or entertaining guests.

The flat features two spacious bedrooms, providing ample space for rest and personal belongings. The modern bathroom has been thoughtfully updated, ensuring a fresh and inviting atmosphere.

One of the standout advantages of this property is its proximity to Palmers Green station, making it an ideal choice for commuters seeking easy access to central London and beyond. The surrounding area is rich with local amenities, including shops, cafes, and parks, enhancing the appeal of this charming flat.

Available for rent from the end of April 2025, this property presents an excellent opportunity for those looking to settle in a welcoming community. With its contemporary finishes and convenient location, this flat is sure to attract interest. Do not miss the chance to make this lovely space your new home.

Council tax band - TBC - Enfield council.

These particulars, whilst believed to be accurate are set out as a general outline only for guidance and do not constitute any part of an offer or contract. Intending purchasers should not rely on them as statements of representation of fact, but must satisfy themselves by inspection or otherwise as to their accuracy. No person in this firm's employment has the authority to make or give any representation or warranty in respect of the property.

Homelink Lettings and Estates
62 Chase Side, London N14 5PA
0208 882 2112 [homelink.co.uk](https://www.homelink.co.uk)

