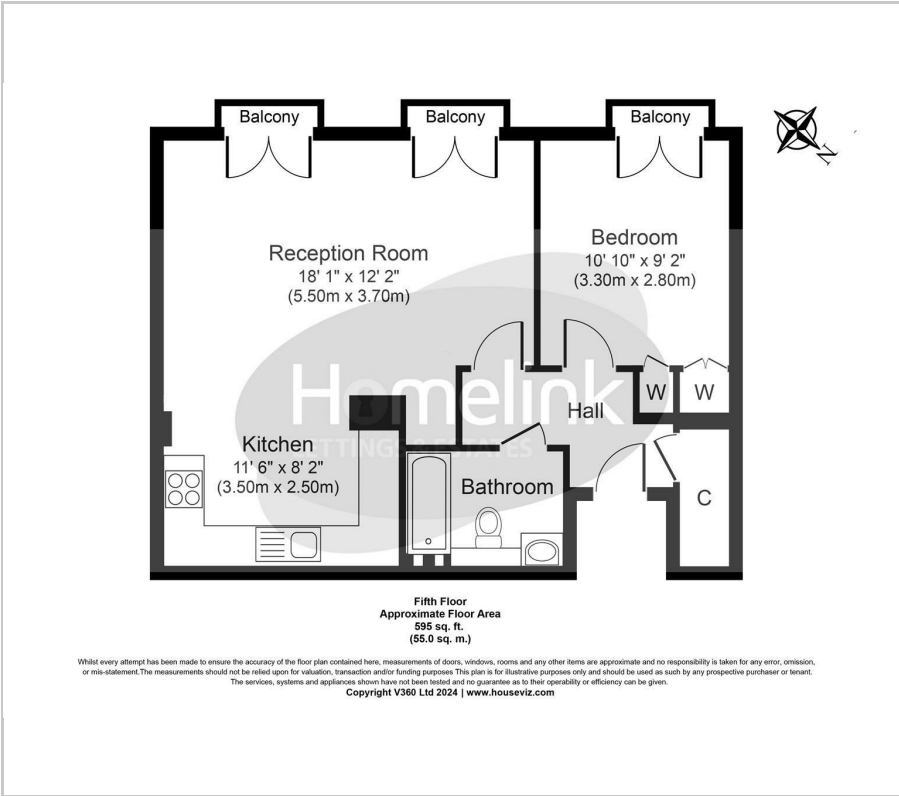




Craven Street, Charing Cross, WC2N

£3,000 Per Month

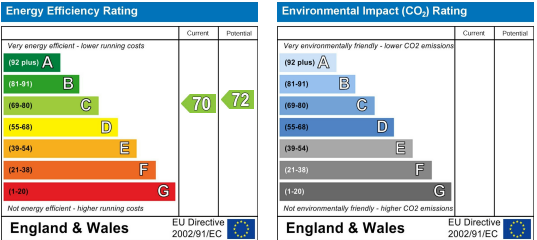
Floor Plan



Area Map



Energy Efficiency Graph



Viewing

Please contact our Homelink Lettings & Estates Office on 0208 882 2112 if you wish to arrange a viewing appointment for this property or require further information.

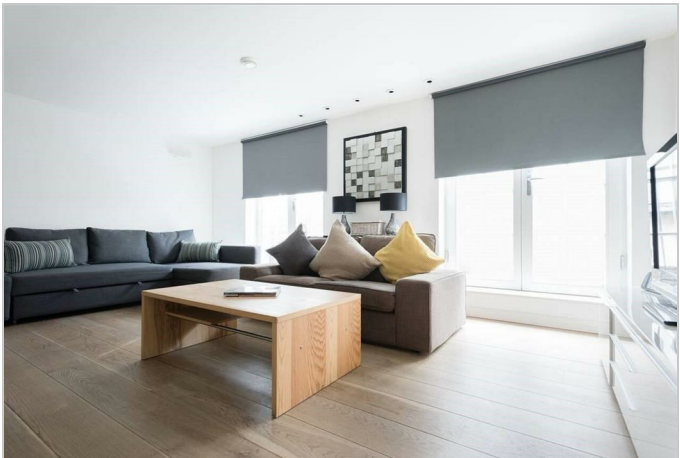
- Central London Location
- Would make a great Pied-à-Terre
- Beautifully Presented
- London Skyline on Doorstep
- This is a Must See Property
- Ideal for Professional Person
- Porter & Lift
- Furnished as Seen
- Close to Several Stations
- Available From May

****CENTRALLY LOCATED**** Homelink are delighted to offer for rent this stylish and bright one double bedroom flat on the fifth floor of this period development located moments from the River Thames, London Eye and Trafalgar Square, within a few minutes walk to Covent Gardens.

The property is within a well kept, desirable development on a quiet street with a lift and porter.

The accommodation comprises modern finishes including wood flooring, large living spaces, semi open plan modern fully fitted kitchen, fully tiled bathroom and ample storage and comes furnished.

Westminster C/Tax Band - F
2025/26 C/Tax - £1,469.26



These particulars, whilst believed to be accurate are set out as a general outline only for guidance and do not constitute any part of an offer or contract. Intending purchasers should not rely on them as statements of representation of fact, but must satisfy themselves by inspection or otherwise as to their accuracy. No person in this firm's employment has the authority to make or give any representation or warranty in respect of the property.

Homelink Lettings and Estates
62 Chase Side, London N14 5PA
0208 882 2112 [homelink.co.uk](https://www.homelink.co.uk)

