



Warwick Road, Bounds Green, N11

Guide Price £390,000



2



1

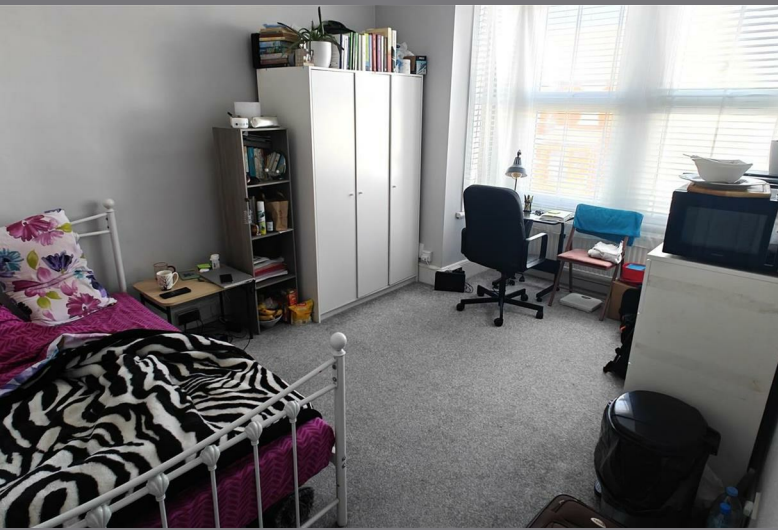


1



E

Warwick Road, Bounds Green, N11



Description

****IDEAL FOR FIRST TIME BUYERS**** Homelink are pleased to be the vendors chosen sole agency in presenting for sale a first floor two double bedroom flat in a prime location of Bounds Green.

The property comprises of the 2 good sized bedrooms, spacious lounge/dining room, separate fitted kitchen and a 3 piece tiled shower room. Other benefits include gas central heating, double glazing and loft conversion potential (STPP) and also comes with the full Freehold.

This is an ideal opportunity for buyers to be close to both Bounds Green underground station (Piccadilly Line Zone 3) and Bowes Park Mainline station (direct to Moorgate). Also close by are several good and outstanding Ofsted rated schools, local parks, cafes and eateries.

To arrange an appointment, call and speak to Sheikh in sales dept. Viewings highly recommended.

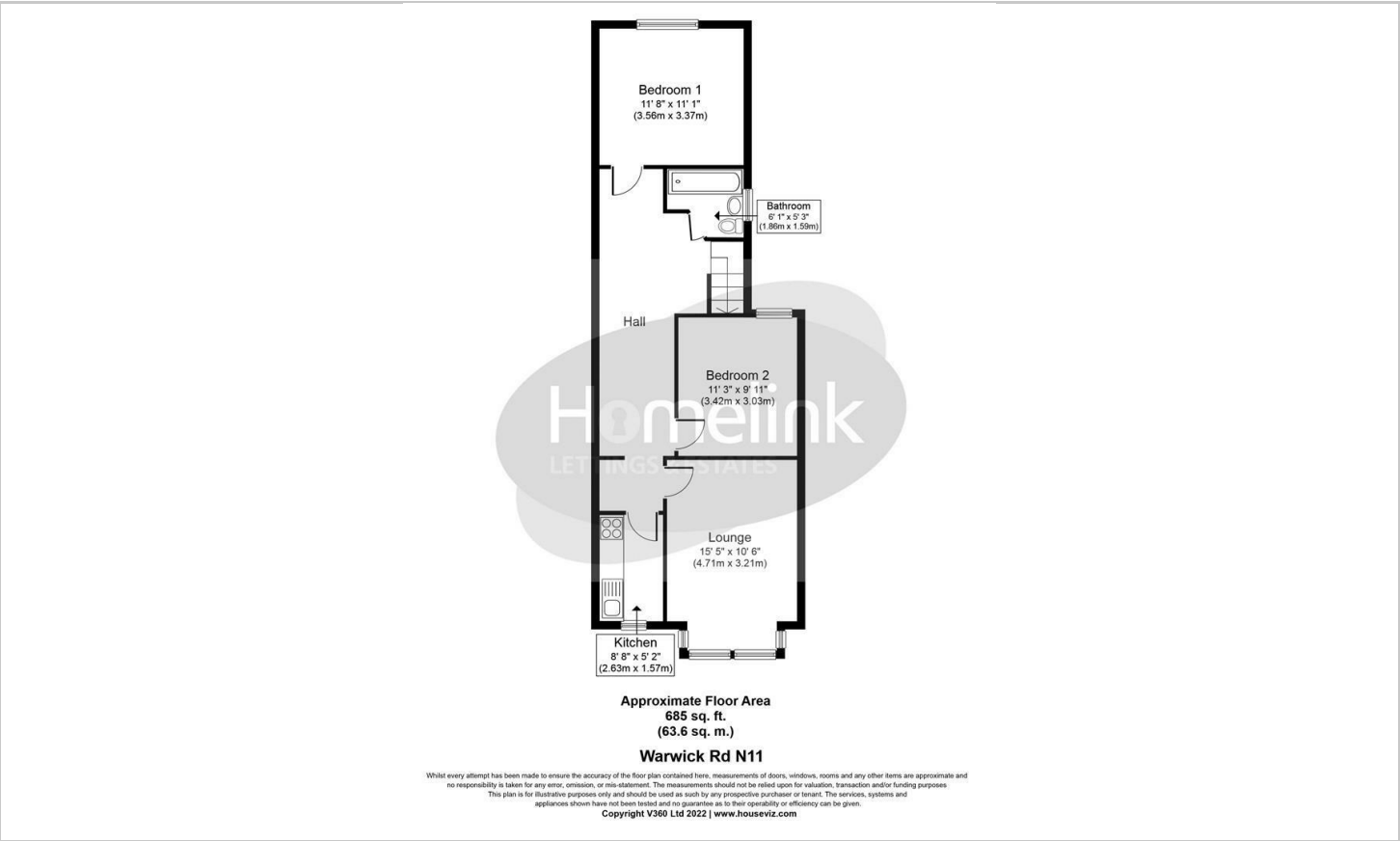
Tenure: Freehold
Service Charge: ZERO
Ground Rent: ZERO
Council Tax Band - C

- Two Double Bedroom Flat
- Potential For Loft Conversion (STPP)
- First Time Buyers Opportunity
- Gas Central Heating
- Good Condition
- Local Amenities Close by
- Short Walk to Bounds Green Tube
- No Service Charge or Ground Rent
- Chain Free
- Freehold

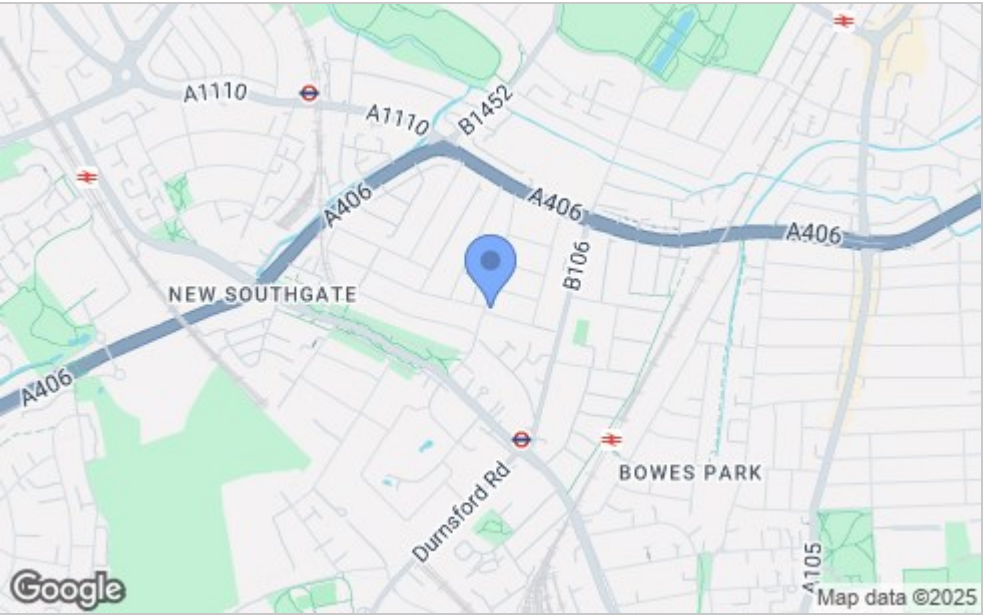




Floor Plan



Area Map



Viewing

Please contact our Homelink Lettings & Estates Office on 0208 882 2112 if you wish to arrange a viewing appointment for this property or require further information.

These particulars, whilst believed to be accurate are set out as a general outline only for guidance and do not constitute any part of an offer or contract. Intending purchasers should not rely on them as statements of representation of fact, but must satisfy themselves by inspection or otherwise as to their accuracy. No person in this firms employment has the authority to make or give any representation or warranty in respect of the property.

Energy Efficiency Graph

