



Newgatestreet Road, Goffs Oak, EN7

£4,250 Per Calendar Month

 4  3  2  D

Newgatestreet Road, Goffs Oak, EN7



Description

****STUNNING NEW BUILT HOME**** Homelink are delighted to offer for rent this immaculately presented 4 double bedroom newly built home set in a rural section of London's commuter belt between Cheshunt Town and Cuffley Village.

Goff's Oak is a picturesque village offering a serene lifestyle. Home to everyday conveniences including a post office, community library, grocery store and popular gastropub, much of the village's community life centres around the Village Hall and its football pitch, tennis court, playground and football court.

Nearby, a variety of leisure pursuits are available courtesy of venues such as Myddelton House Gardens, a selection of highly regarded Golf Clubs, Paradise Wildlife Park, Herts Young Mariners Base and Lea Valley White Water Centre.

Goff's Oak also provides easy access to the capital; trains run into London Moorgate from the neighbouring village of Cuffley, located approximately 1 mile away.

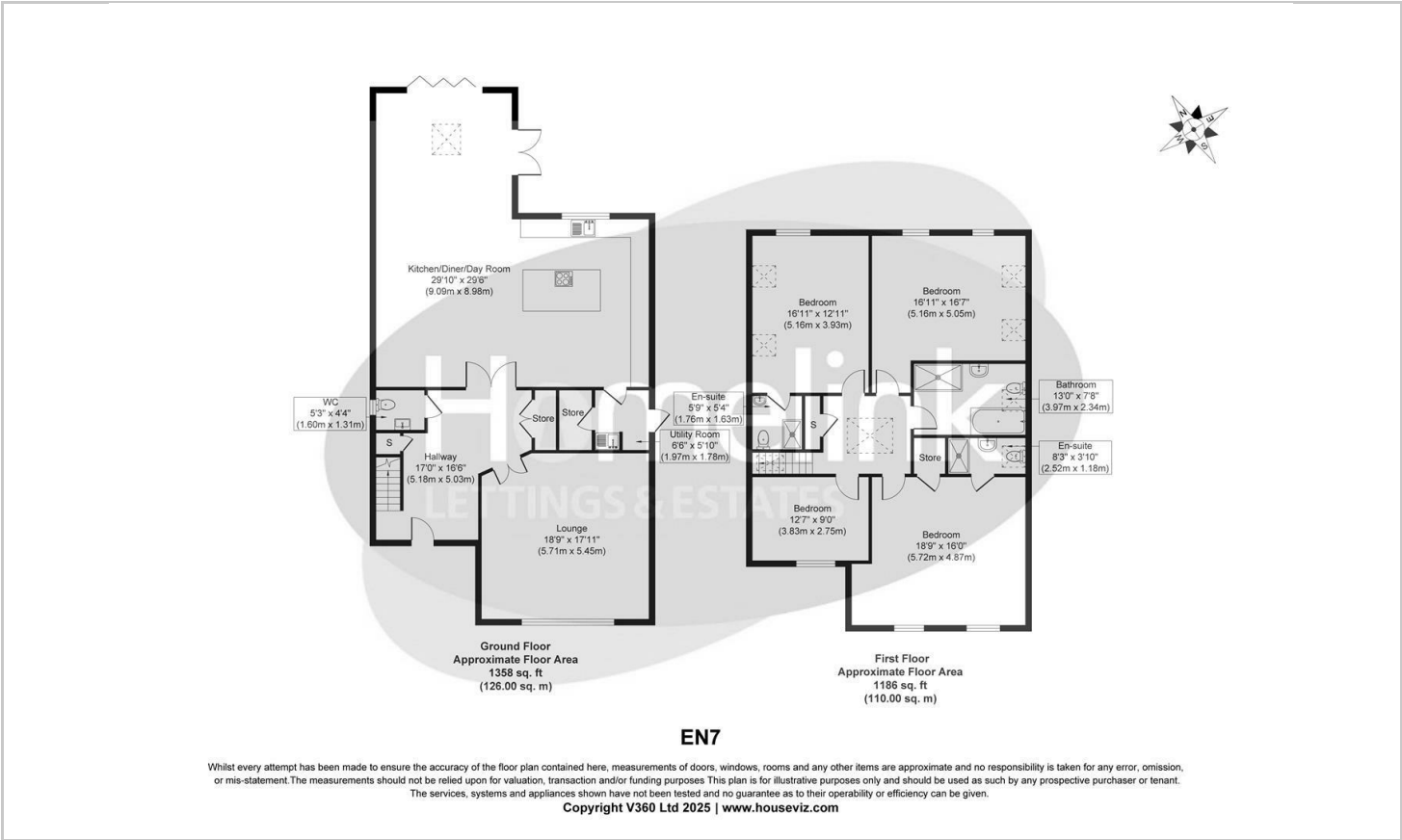
Broxbourne C/Tax Band - TBC

- STUNNING NEW BUILD
- LARGE ROOMS THROUGHOUT
- CAPACIOUS SIZED KITCHEN
- LOVELY GROUND FLOOR SPACE
- TWO EN-SUITE BATHROOMS
- CHILDREN FRIENDLY GARDEN
- OSP FOR SEVERAL VEHICLES
- VILLAGE SETTING
- IDEAL FOR FAMILIES
- AVAILABLE NOW

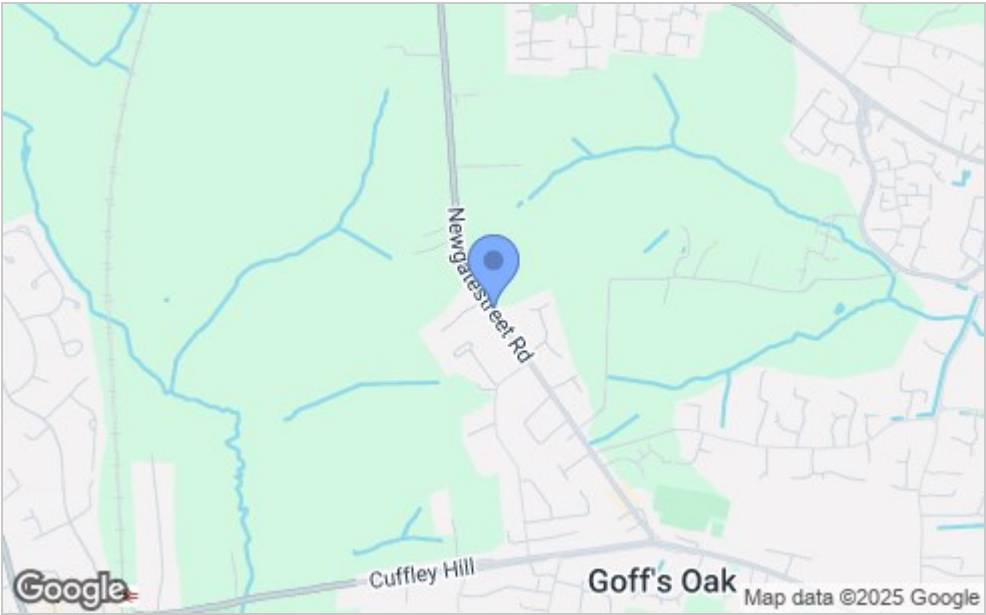




Floor Plan



Area Map



Viewing

Please contact our Homelink Lettings & Estates Office on 0208 882 2112 if you wish to arrange a viewing appointment for this property or require further information.

These particulars, whilst believed to be accurate are set out as a general outline only for guidance and do not constitute any part of an offer or contract. Intending purchasers should not rely on them as statements of representation of fact, but must satisfy themselves by inspection or otherwise as to their accuracy. No person in this firms employment has the authority to make or give any representation or warranty in respect of the property.

Energy Efficiency Graph

