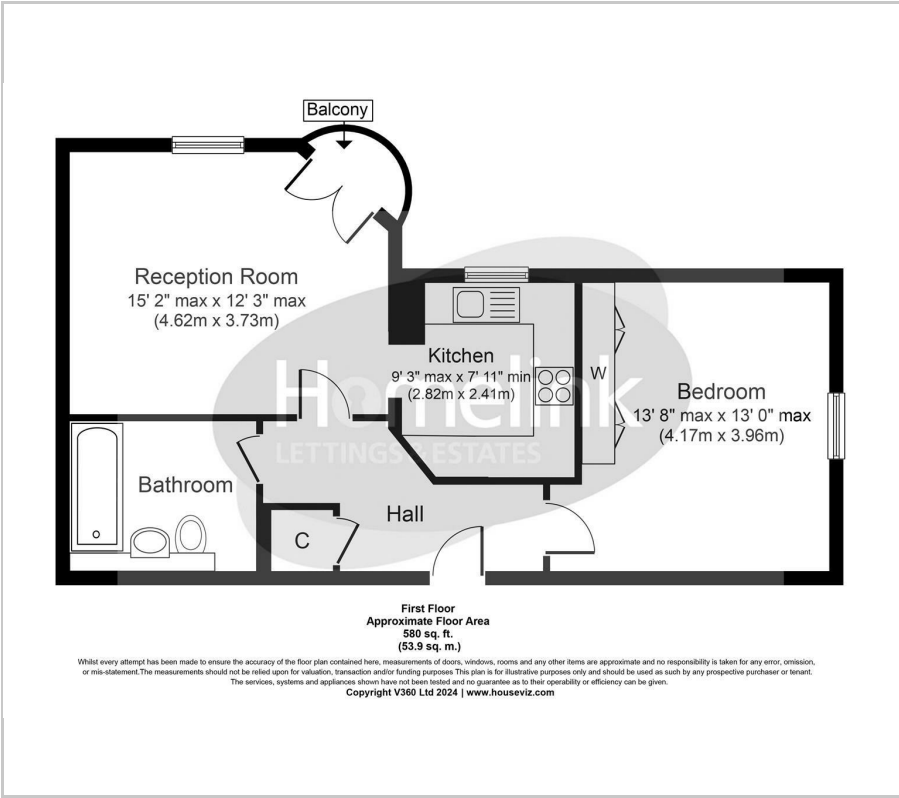




Willis Yard, Chelmsford Road, Southgate, N14

Offers In The Region Of £349,999

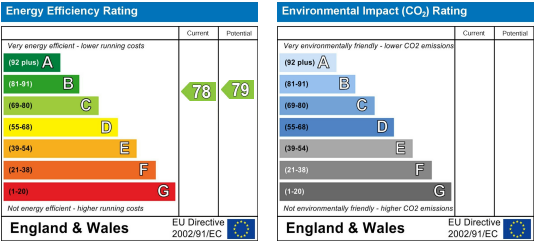
Floor Plan



Area Map



Energy Efficiency Graph



Viewing

Please contact our Homelink Lettings & Estates Office on 0208 882 2112 if you wish to arrange a viewing appointment for this property or require further information.

- Modern One Bedroom Flat
- Private Balcony
- Wood Flooring Throughout
- Ideal for First Time Buyers
- Must Be Seen
- Immaculate Condition
- Close to Southgate Tube Station
- Allocated Parking Space
- Second Floor Flat
- Chain free

****IDEAL FOR FIRST TIME BUYERS**** Homelink Lettings & Estates are delighted to offer for sale this immaculate modern one bedroom flat in the heart of the desirable Southgate district.

The property offers an array of benefits such as large double bedroom with integrated storage, contemporary three piece bathroom, small balcony, fully fitted kitchen with integrated white goods, double glazed windows throughout and an allocated off street parking space for one car.

Great location with Southgate underground station close by (eight minutes walk away) as well as various bus routes towards Cockfoster's, Winchmore Hill and Enfield Town. Ideal for young working professionals.

Please call and speak to one of our friendly sales team to arrange an internal inspection.

Tenure: Leasehold
Lease - 106 Years
Service charge - £1,635.21 p.a.
Ground Rent - £100 p.a.
Enfield C/Tax Band 'C'
2024/25 C/Tax - £1,835.98



These particulars, whilst believed to be accurate are set out as a general outline only for guidance and do not constitute any part of an offer or contract. Intending purchasers should not rely on them as statements of representation of fact, but must satisfy themselves by inspection or otherwise as to their accuracy. No person in this firm's employment has the authority to make or give any representation or warranty in respect of the property.

Homelink Lettings and Estates
62 Chase Side, London N14 5PA
0208 882 2112 [homelink.co.uk](https://www.homelink.co.uk)

