

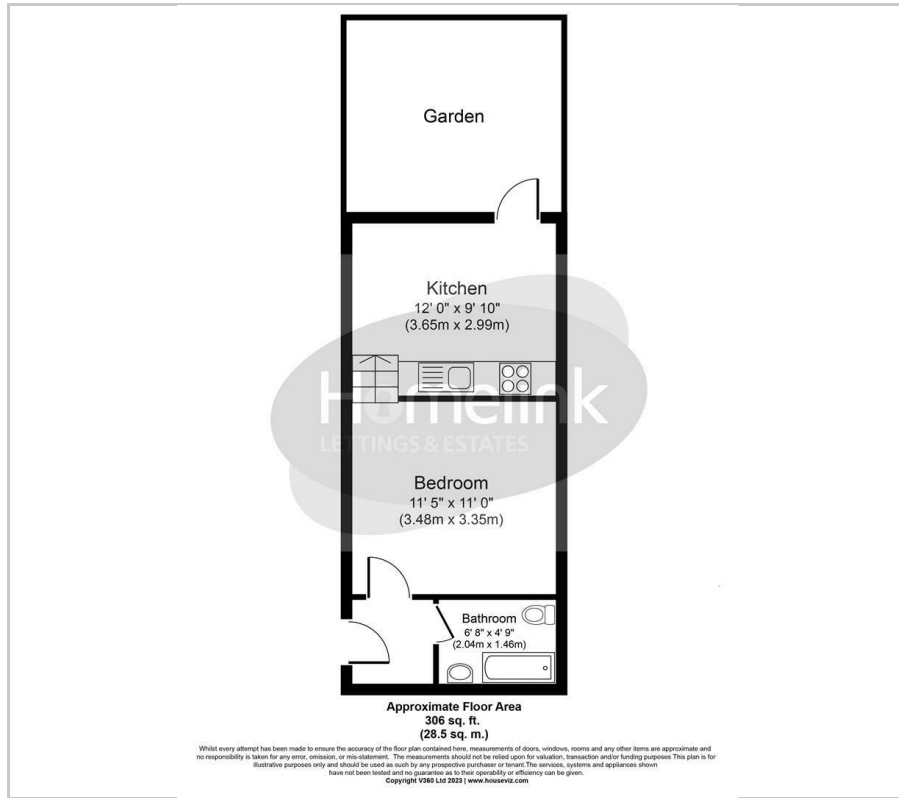


Belmont Road, Turnpike Lane, N15

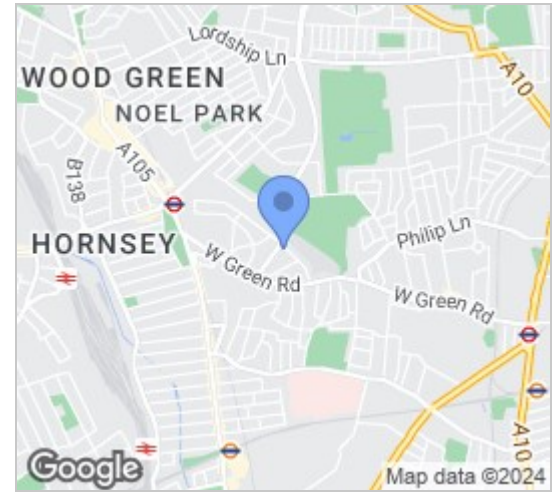
£1,250 Per Month

1 1 0 C

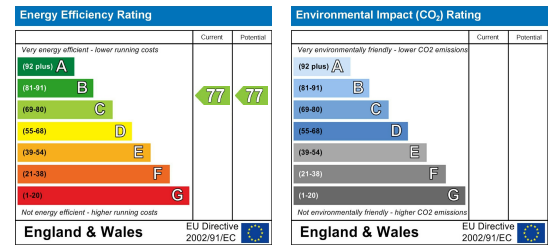
Floor Plan



Area Map



Energy Efficiency Graph



Viewing

Please contact our Homelink Lettings & Estates Office on 0208 882 2112 if you wish to arrange a viewing appointment for this property or require further information.

- ALL BILLS INCLUDED FOR £1,450 PCM
- OWN PRIVATE GARDEN
- GREAT TRANSPORT LINKS
- IDEAL FOR SINGLE PERSON
- CLOSE TO SHOPS AND PARKS
- AVAILABLE FROM EARLY MID JULY



Homelink offer for rent this ground floor Studio flat. The flat benefits a fitted kitchen, open plan living space, tiled bathroom and its very own garden

Conveniently located close to the Underground, commuting is a breeze, making this studio an ideal choice for professionals. With local shopping amenities just a stone's throw away, everything you need is within easy reach.

This Studio will be available early July, offering you the opportunity to make this space your own. Don't miss out on the chance to call this property home, book a viewing today to avoid disappointment.

Haringey C/Tax Band - C
2024/25 C/Tax - £1,873.18 (included)

Please note the rent will be £1,450 pcm inclusive of all bills.



These particulars, whilst believed to be accurate are set out as a general outline only for guidance and do not constitute any part of an offer or contract. Intending purchasers should not rely on them as statements of representation of fact, but must satisfy themselves by inspection or otherwise as to their accuracy. No person in this firm's employment has the authority to make or give any representation or warranty in respect of the property.

Homelink Lettings and Estates
62 Chase Side, London N14 5PA
0208 882 2112 homelink.co.uk

