

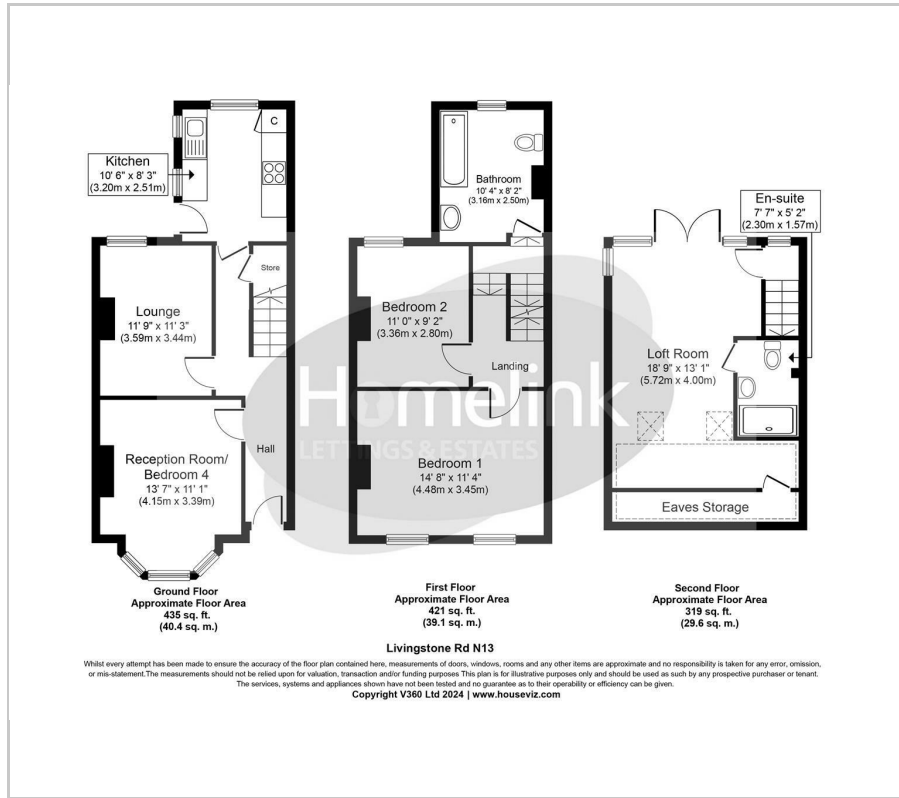


Livingstone Road, Palmers Green, N13

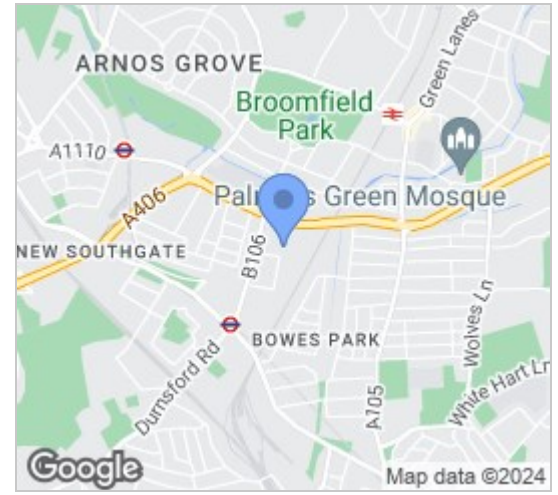
£2,500 PCM

3 2 2 D

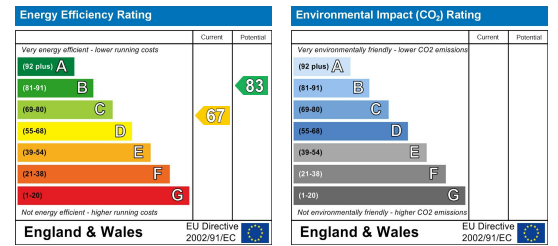
Floor Plan



Area Map



Energy Efficiency Graph



Viewing

Please contact our Homelink Lettings & Estates Office on 0208 882 2112 if you wish to arrange a viewing appointment for this property or require further information.

- Three/Four bedroom property
- Arranged over three floors
- Loft conversion
- Great Road Links to A406
- Free Street parking
- Terraced House
- Large private rear garden
- Good Transport Links
- Close to shops
- Available Now

****Newly refurbished**** Homelink are pleased to offer for newly decorated three/four bedroom house arranged over 3 floors.

The property comprises of a front reception/bedroom 4. To the rear is the second reception leading to a fitted kitchen and access to large rear garden.

On the first floor there are 2 double bedrooms, a huge 3 piece bathroom suite and on the top floor is a further bedroom with en-suite shower room. Benefits include amazing feature fireplaces in all rooms, sash style double glazed windows, gas central heating and wooden flooring on first 2 floors.

Great location as the property is situated within walking distance to both Palmers Green train station and Bounds Green underground station. Additionally the A406 & A10 are close by too.

To arrange a viewing, call and speak with one of our friendly lettings team. Early viewings recommended.

Enfield Council Tax Band 'D'
2024/25 C/Tax - £2,065.48



These particulars, whilst believed to be accurate are set out as a general outline only for guidance and do not constitute any part of an offer or contract. Intending purchasers should not rely on them as statements of representation of fact, but must satisfy themselves by inspection or otherwise as to their accuracy. No person in this firm's employment has the authority to make or give any representation or warranty in respect of the property.

Homelink Lettings and Estates
62 Chase Side, London N14 5PA
0208 882 2112 homelink.co.uk

