

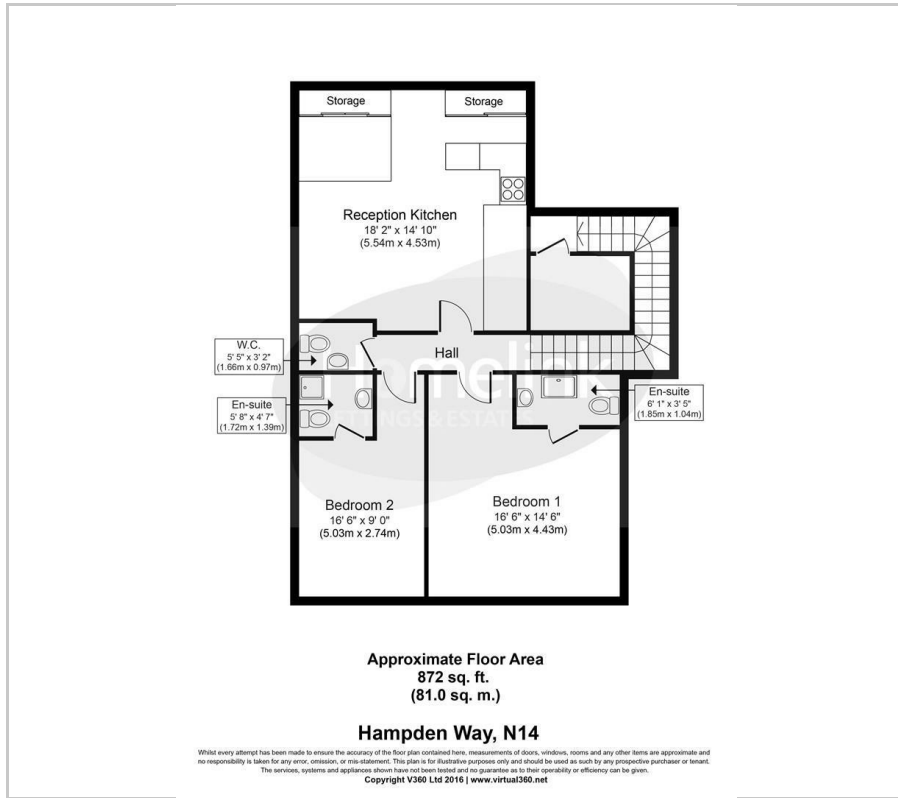


Hampden Way, Southgate, N14

£1,700 PCM

2 2 1 E

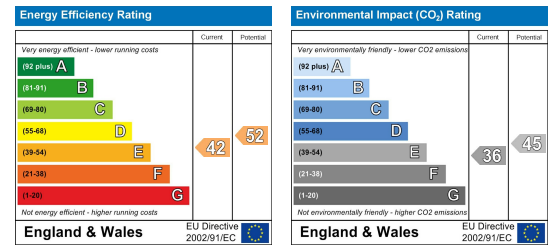
Floor Plan



Area Map



Energy Efficiency Graph



Viewing

Please contact our Homelink Lettings & Estates Office on 0208 882 2112 if you wish to arrange a viewing appointment for this property or require further information.

- Two bedroom flat
- Fully furnished
- Close to Shops
- Two en-suites
- Double Glazing
- Top floor
- Fully fitted kitchen
- Open plan kitchen/ lounge
- Wooden flooring throughout
- Available Now

****LARGE 2 BED FLAT**** Homelink Lettings & Estates are delighted to offer for rent this two double bedroom top floor flat ideally located near the desirable Hampden Square area. The property boasts an array of benefits such as a modern kitchen lounge space, two double bedrooms, both offering en-suite facilities, fully fitted kitchen including all white goods, double glazed throughout, gas central heating and is available now.

Bus routes available from close to the property towards both Southgate and Arnos Grove tube stations. Please call and speak with one of our friendly lettings team members.

Barnet C/Tax Band 'C'
2023/24 C/Tax - £1,632.14



These particulars, whilst believed to be accurate are set out as a general outline only for guidance and do not constitute any part of an offer or contract. Intending purchasers should not rely on them as statements of representation of fact, but must satisfy themselves by inspection or otherwise as to their accuracy. No person in this firm's employment has the authority to make or give any representation or warranty in respect of the property.

Homelink Lettings and Estates
62 Chase Side, London N14 5PA
0208 882 2112 homelink.co.uk

