



Myddleton Road, Bounds Green, N22

Guide Price £600,000

3 2 1 B

# Myddleton Road, Bounds Green, N22



## Description

**\*\*HUGE PRICE REDUCTION\*\*GATED DEVELOPMENT\*\*** Homelink Lettings & Estates are delighted to offer for sale this modern built three bedroom house ideally located within close proximity to transport and local shops.

The property comprises of a fitted modern kitchen, separate living/dining room, ground floor cloakroom, three good sized bedrooms, three piece family bathroom, three piece en-suite to master bedroom and a small wall enclosed garden.

The property is just moments away from both Bowes Park Mainline Station (direct to Moorgate) and Bounds Green Underground Station (Piccadilly Line, Zone 3), good bus and road links, ample local shopping facilities on doorstep, restaurants as well as good schools and nice parks.

To arrange a viewing, call and speak to one of friendly sales team. Viewing highly recommended.

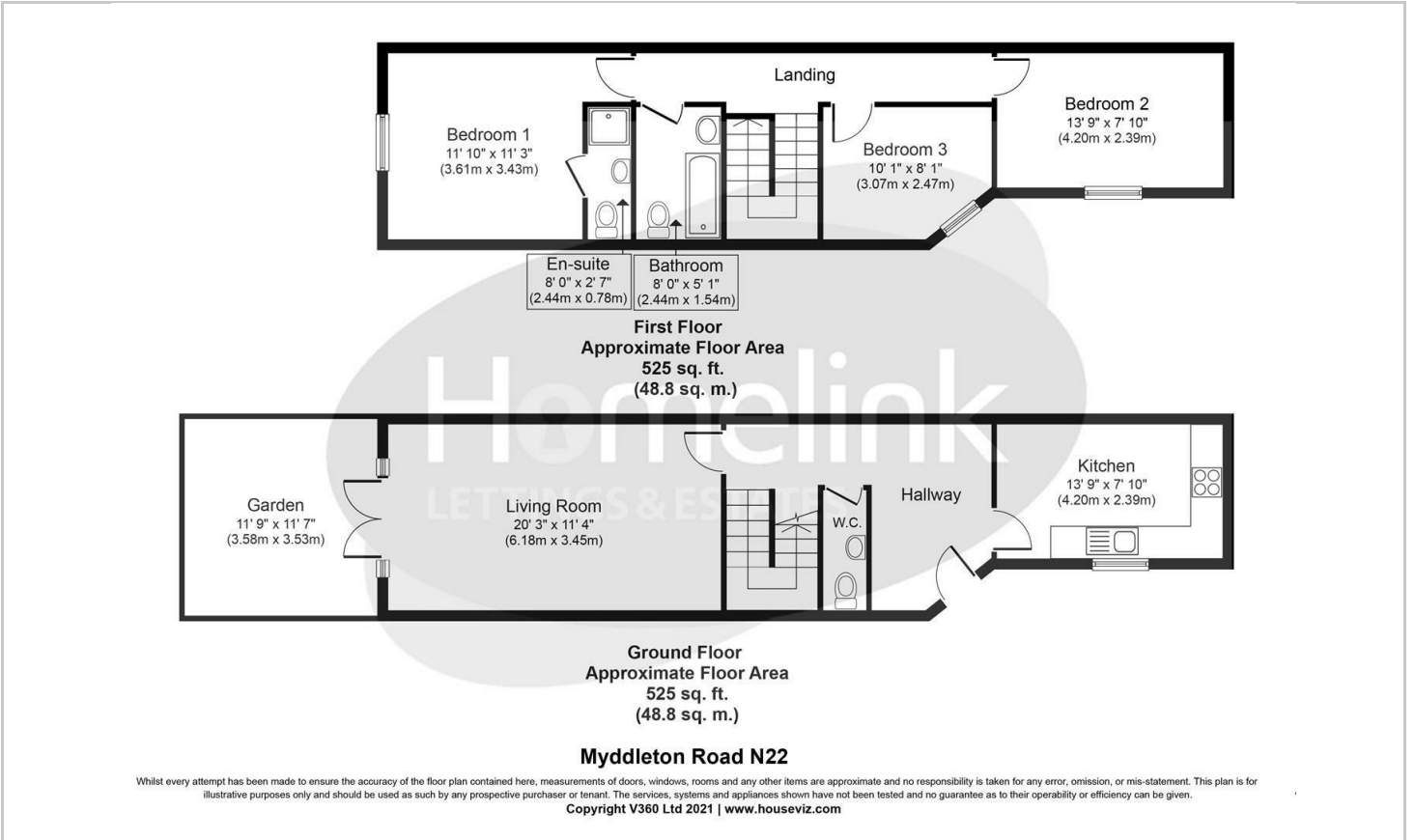
Tenure: Freehold  
Council Tax: Band 'D'

- Large Price Reduction
- Three Bedrooms
- Two Bathrooms + GF Cloakroom
- Fully Fitted Kitchen
- Small Rear Garden
- Modern New Build Property
- Gated Entrance
- Double Glazing + Gas C/H
- Close to Stations
- Chain Free

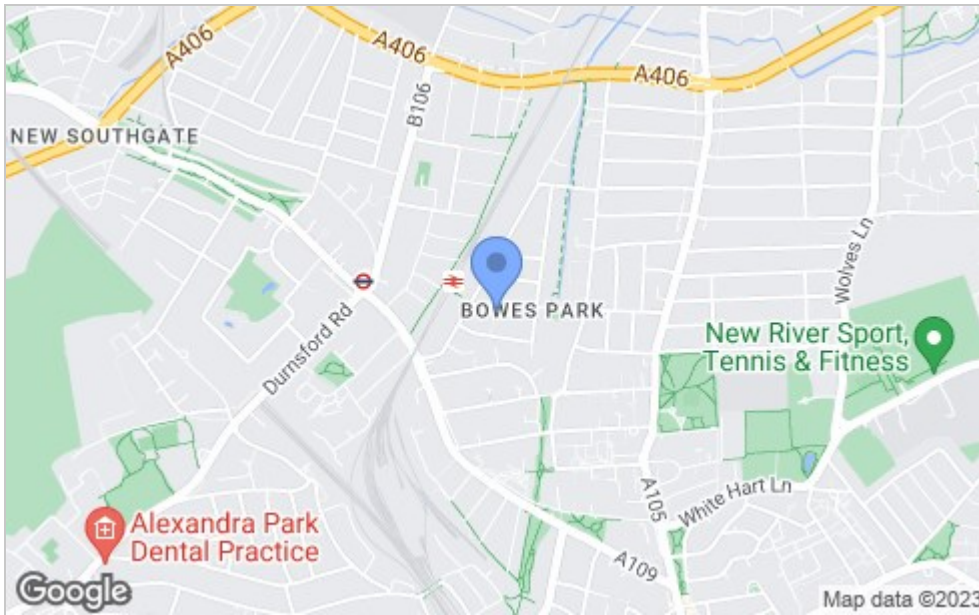




## Floor Plan



## Area Map



## Viewing

Please contact our Homelink Lettings & Estates Office on 0208 882 2112 if you wish to arrange a viewing appointment for this property or require further information.

These particulars, whilst believed to be accurate are set out as a general outline only for guidance and do not constitute any part of an offer or contract. Intending purchasers should not rely on them as statements of representation of fact, but must satisfy themselves by inspection or otherwise as to their accuracy. No person in this firm's employment has the authority to make or give any representation or warranty in respect of the property.

## Energy Efficiency Graph

