



Bowes Park, N22

Price Guide £550,000

2 1 1 B



# Bowes Park, N22



## Description

**\*\*HUGE PRICE REDUCTION\*\*GATED DEVELOPMENT\*\*** Homelink Lettings & Estates are delighted to offer for sale this well presented two bedroom house in the popular Bowes Park area bordering Wood Green and Bounds Green.

The property offers great benefits including two double bedrooms, bathroom on first floor, spacious lounge, modern fitted kitchen and guest WC. Additional benefits include gas central heating, double glazing, wooden effect flooring on ground floor and own private small rear garden.

Located close to both Bowes Park Mainline station and Bounds Green Underground station offering commuters direct access to central London and The City. The property is set close to ample local shopping amenities as well as good schools and parks.

This property would make an ideal first time buy. To make an appointment, call and speak to one of friendly sales team. Viewings highly recommended.

Tenure: Freehold  
Council Tax: Band 'D'

**\*\*AGENTS NOTE:** Property is currently tenanted but can be sold vacant.

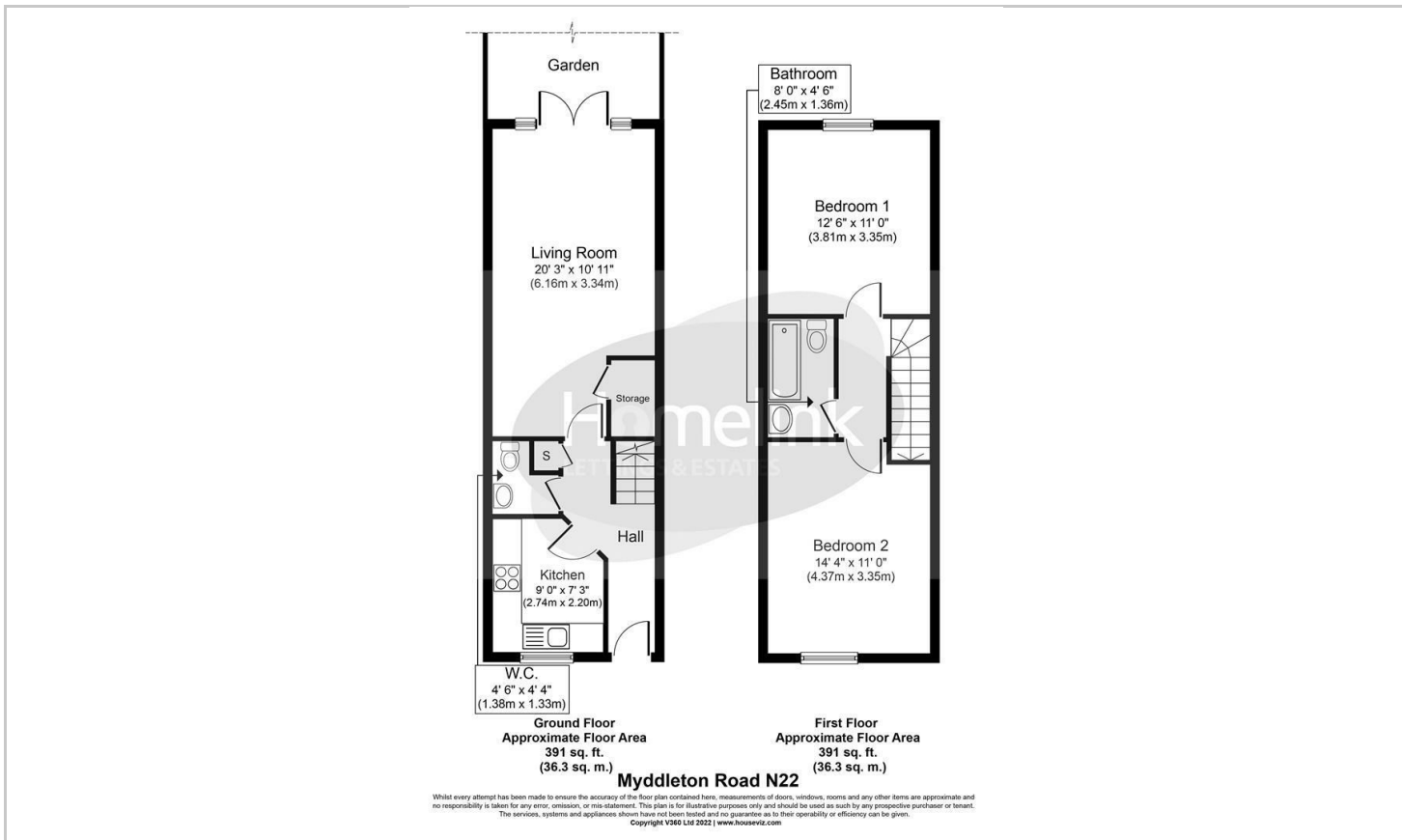
- Two Bedroom House
- Double Sized Bedrooms
- First Floor Bathroom Suite
- Private Rear Garden
- Fitted Modern Kitchen
- D/Glazing + Gas C/Heating
- Great Transport Links
- Close to Shopping Amenities
- Good Road & Bus Links
- FREEHOLD + CHAIN FREE



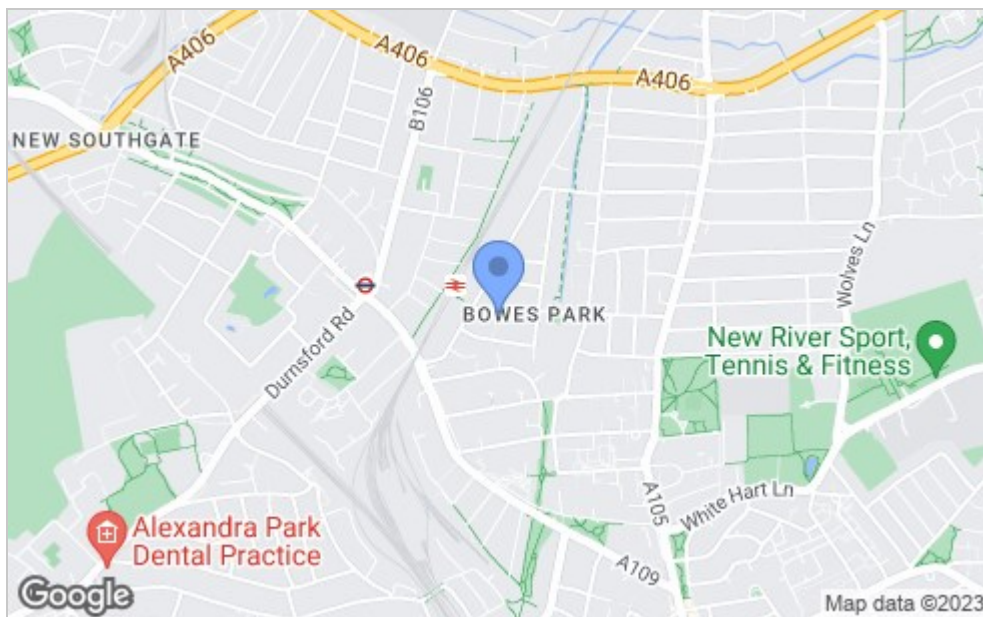




## Floor Plan



## Area Map



## Viewing

Please contact our Homelink Lettings & Estates Office on 0208 882 2112 if you wish to arrange a viewing appointment for this property or require further information.

These particulars, whilst believed to be accurate are set out as a general outline only for guidance and do not constitute any part of an offer or contract. Intending purchasers should not rely on them as statements of representation of fact, but must satisfy themselves by inspection or otherwise as to their accuracy. No person in this firm's employment has the authority to make or give any representation or warranty in respect of the property.

## Energy Efficiency Graph

