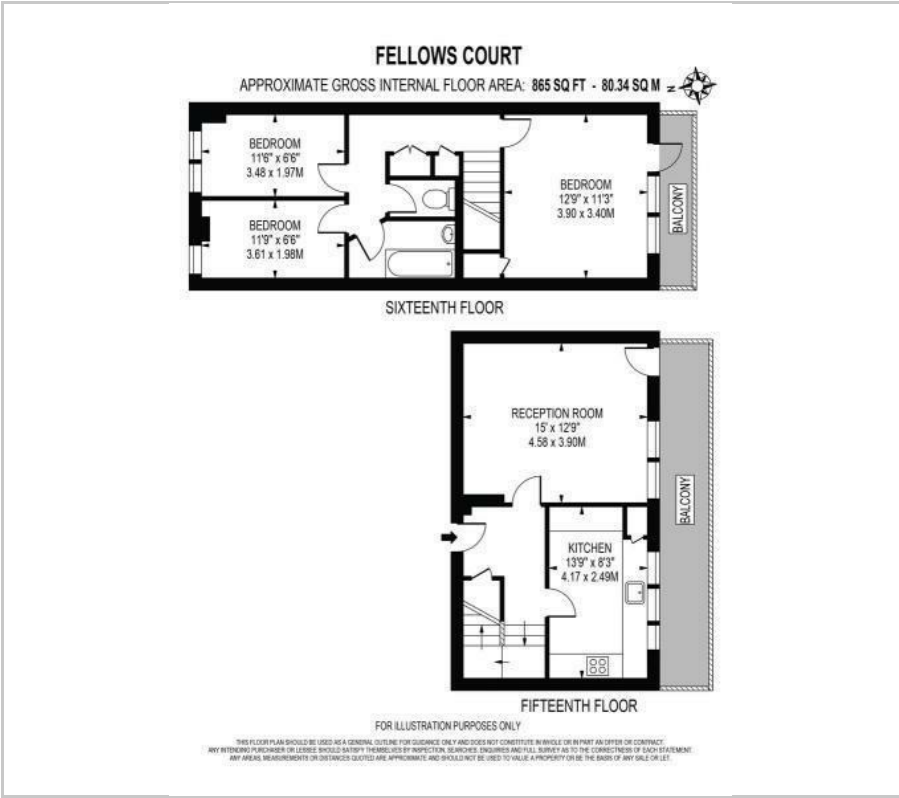




E2 - Hoxton Station - Great Views

Guide Price £390,000

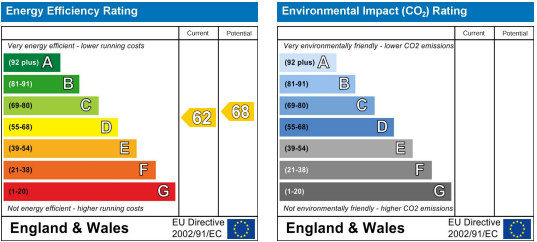
Floor Plan



Area Map



Energy Efficiency Graph



Viewing

Please contact our Homelink Lettings & Estates Office on 0208 882 2112 if you wish to arrange a viewing appointment for this property or require further information.

- 3 Bedroom Flat
- Spacious Lounge/Dining Room
- Set on 15th & 16th Floors
- Excellent Views
- Viewings Recommended
- Separate Fitted Kitchen
- 2 Balconies
- Lift Access
- Great Transport Links
- Chain Free

****AMAZING VIEWS**** Homelink are pleased to bring to the sales market this charming 3 bed split level flat which is set on the upper floors and offer versatile accommodation.

The property has a fitted eat-in kitchen, separate reception room which leads to a full width balcony. On the upper floor are 3 bedrooms, bathroom, separate WC and another balcony with terrific views of London City. Other benefits include gas central heating and double glazing throughout.

With Haggerston and Hoxton Overground stations in close walking distance, travelling in and out of the city is a breeze. The property is offered on a chain free basis and viewings can be booked in person. To make an appointment, call and speak to one of our friendly sales team on 020 8882 2112.

Tenure: Leasehold
Lease: Approx. 95 Years Unexpired



These particulars, whilst believed to be accurate are set out as a general outline only for guidance and do not constitute any part of an offer or contract. Intending purchasers should not rely on them as statements of representation of fact, but must satisfy themselves by inspection or otherwise as to their accuracy. No person in this firm's employment has the authority to make or give any representation or warranty in respect of the property.

Homelink Lettings and Estates
62 Chase Side, London N14 5PA
0208 882 2112 [homelink.co.uk](https://www.homelink.co.uk)

