

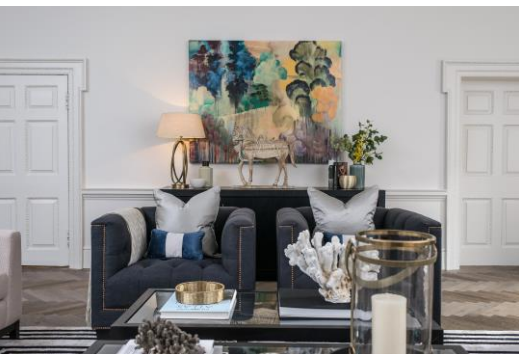


32 Paradise Road

Richmond, TW9

£10,000 per month
(£2,307.69 per week)

CHESTERTONS



32 Paradise Road

Richmond, TW9

- Stunning Grade II Listed House
- Once Home of Virginia Woolf
- Built Circa 1750
- Over 3600 Square Feet
- Central Richmond Location



An elegant and historically significant Grade II listed Georgian Villa positioned in the heart of Richmond and once residence of the author Virginia Woolf.

Originally built in circa 1750, this now exceptional four storey family home, has been painstakingly restored carefully blending the beautiful Georgian architecture with the contemporary features required for modern living. There are a whole host of period features; high ceilings and large windows giving the house masses of natural light. The house boasts over 3,600 square feet of internal space. Houses of this age and grandeur are rare in Richmond therefore an internal inspection is recommended.

Minimum Term: 12 months
Deposit Required: 5 weeks
Local Authority: London Borough of Richmond upon Thames
Council Tax Band: H
EPC Rating: C
Unfurnished

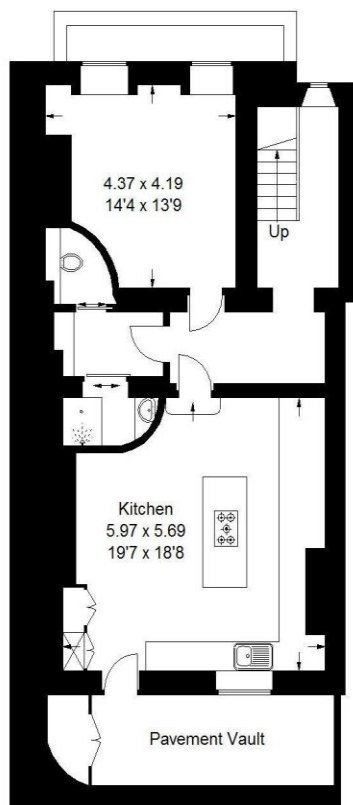
Score	Energy rating	Current	Potential
92+	A		
81-91	B		
69-80	C	71 C	76 C
55-68	D		
39-54	E		
21-38	F		
1-20	G		

Chestertons Richmond Lettings

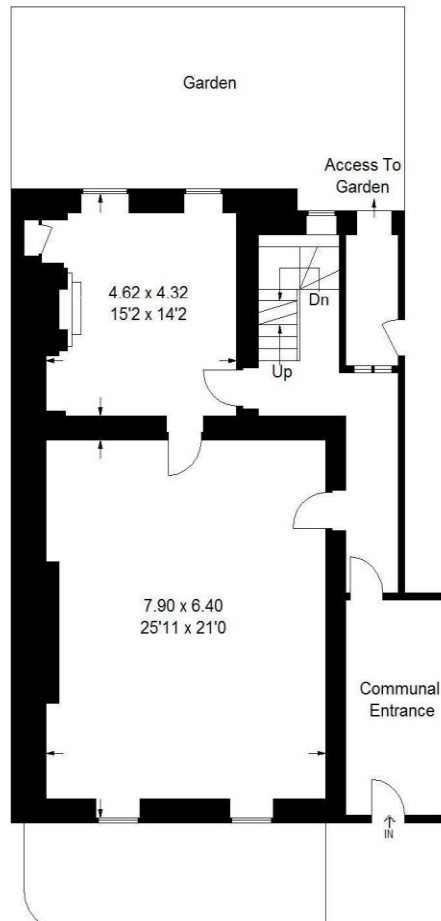
23a Friars Stile Road
 Richmond
 Surrey
 TW10 6NH
 richmondlettingsusers@chestertons.co.uk
 02037583333
 chestertons.co.uk

Leonard, Hogarth House

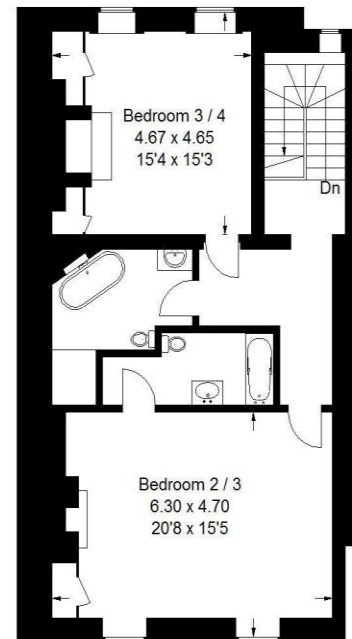
Approx. Gross Internal Area
Total = 334.8 sq m / 3603 sq ft



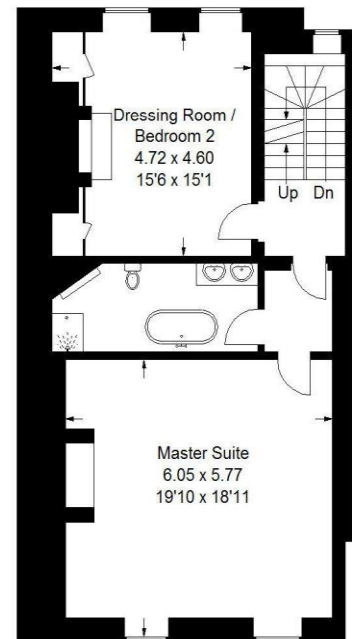
Lower Ground Floor



Ground Floor



Second Floor



First Floor

