



Castle View Retirement Village  
Helston Lane, SL4

CHESTERTONS







“When you resize to an apartment at Castle View you may think you have moved into a boutique cruise ship, moored at the edge of Windsor.” As one of our homeowners has described it!

Castle View is a new community designed exclusively for the over 55's. The apartments have been thoughtfully planned and boast a high end, contemporary finish throughout. This stunning one bedroom apartment offers stylish open-plan, level access living with a private balcony to relax on, as well as fully fitted, uniquely designed kitchen and bathroom. The apartment benefits from fitted Neff and Bosch appliances and the bedroom offer ample storage with built in wardrobe as standard.

For total peace of mind, as well as around the clock reception staffing, there is a 24/7 emergency call system. Whilst offering independent living, Castle View also offers owners a real sense of community with a weekly events program, Cafe, Bistro and Lounge area, Landscaped Gardens, Roof Top Terrace and the impressive Sky Lounge where you can enjoy a drink as well as the simply magnificent views of Windsor Castle.

For this who'd like a little extra support, our all-inclusive package includes all Utility Bills, council tax, a delicious main meal every day, weekly apartment cleaning and weekly linen laundry service. To learn more please get in touch to speak with one of our professional consultants. Only a select few apartments remain, and we encourage you to book a viewing as soon as possible.

Additional tenant charges apply (fees apply to non-AST tenancies only)  
 Tenancy Agreement Fee: £300  
 References per Tenant/Guarantor: £60  
 Inventory check (approx. £100 – £250 inc. VAT)  
[chestertons.co.uk/property-to-rent/applicable-fees](http://chestertons.co.uk/property-to-rent/applicable-fees)

**£2,633 pcm**

- Pay one simple, inclusive monthly charge which covers your rent and community charge. This includes:
- 24/7 On-site Team For Peace of Mind
- Use of All Communal Facilities including Café, lounge bar & bistro, hobby rooms, and more
- Stunning sky lounge roof top terrace
- Social activities and events calendar
- Building Insurance and Security
- Full Maintenance of Communal Areas & Gardens
- Independent Living Plus package available
- ARCO approved operator

Score	Energy rating	Current	Potential
92+	A		
81-91	B	84 B	84 B
69-80	C		
55-68	D		
39-54	E		
21-38	F		
1-20	G		

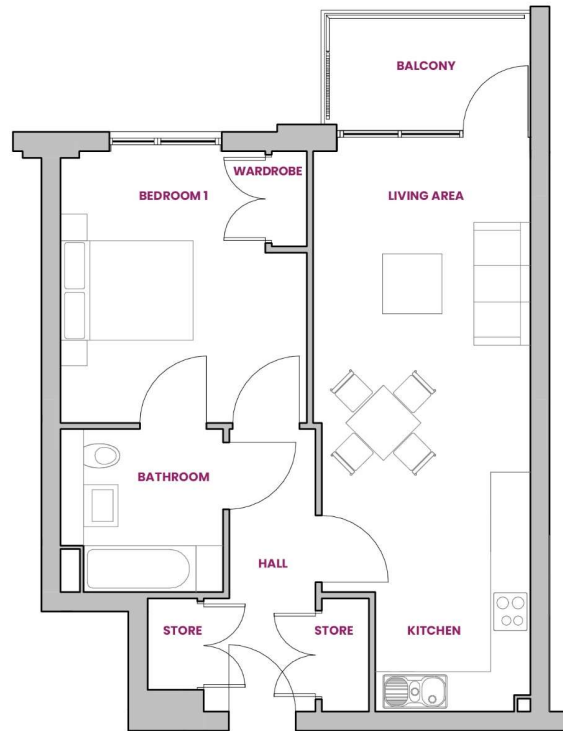
**Minimum Term:** 12 months  
**Deposit Required:** 1 month  
**Local Authority:** Royal Borough of Windsor & Maidenhead  
**Council Tax Band:** D  
**EPC Rating:** B

**Chestertons Richmond Lettings**

23a Friars Stile Road  
 Richmond  
 Surrey  
 TW10 6NH

[richmondlettingsusers@chestertons.co.uk](mailto:richmondlettingsusers@chestertons.co.uk)  
 02037583333





**Floor area: 616 (sq ft)**

	W mm (sqft)	D mm (sqft)
<b>BEDROOM 1</b>	3715 (12'2")	4108 (13'6")
<b>LIVING AREA / KITCHEN</b>	3275 (10' 9")	8448 (27'9")
<b>BATHROOM</b>	2450 (8'0")	2450 (8'0")

The properties are sold unfurnished.



**CASTLE VIEW**

RETIREMENT LIVING | WINDSOR

Chesterton UK Services Limited trading as Chestertons for themselves and for the vendor of this property whose agents they are, give notice that (i) these particulars do not constitute any part of an offer or contract, (ii) all statements contained within these particulars are made without responsibility on the part of Chestertons or the vendor, (iii) whilst made in good faith, none of the statements contained within these particulars are to be relied upon as a statement or representation of fact, (iv) any intending purchasers must satisfy themselves by inspection or otherwise as to the correctness of each of the statements contained within these particulars, (v) the vendor does not make or give either Chestertons or any person in their employment any authority to make or give representation or warranty whatsoever in relation to this property. Wide angle lenses may be used. ©Copyright Chestertons | Chesterton Global Ltd | Registered Office 40 Connaught Street, Hyde Park, London W2 2AB Registered Company Number 05334580.

**RETIREMENT**  
**HOMESearch**



This paper is  
100% recyclable