

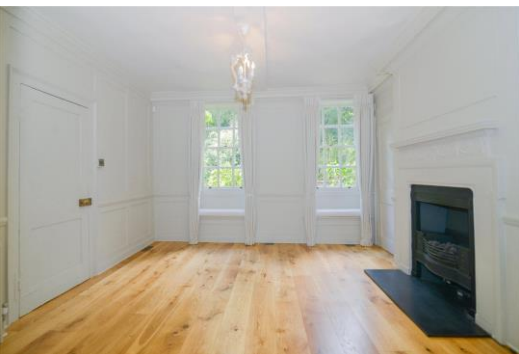


Sion Road

Twickenham, TW1

£7,000 per month
(£1,615.38 per week)

An exceptionally well-presented and extremely rare Grade II* Georgian four storey townhouse located in one of Twickenham's most desirable addresses.



Sion Road

Twickenham, TW1

- Four Double Bedrooms
- Georgian House
- Grade II Listed
- Original Period Features
- Garage



An exceptionally well-presented and extremely rare Grade II* Georgian four storey townhouse located in one of Twickenham's most desirable addresses. This elegant Villa has an enviable position overlooking York House gardens while being 50 yards from The River Thames.

This stunning property has undergone complete refurbishment, the house is a perfect blend of contemporary and unique Georgian splendour. Leading from the original stone staircase and through the period front door leads to the raised ground floor with a welcoming hallway; a double reception room with a characteristically large window. On the first floor there is the main bedroom with views of York House gardens, a double bedroom and luxury bathroom on the half landing. The top floor offers two further double bedrooms and shower room. The lower ground floor has been reconfigured to provide a contemporary kitchen/breakfast room cleverly blending modern appliances and original ceiling beams and features. There is a beautiful secluded, high walled rear garden with rear access and a garage.

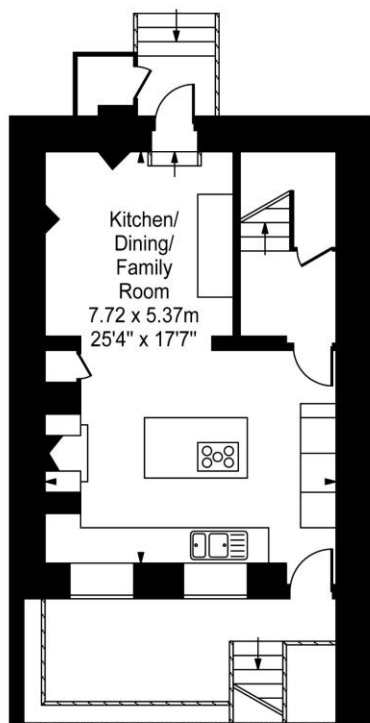
Minimum Term:	12 months
Deposit Required:	£9,692.31
Local Authority:	London Borough of Richmond upon Thames
Council Tax Band:	G
EPC Rating: D	
Unfurnished	

Chestertons Richmond Lettings

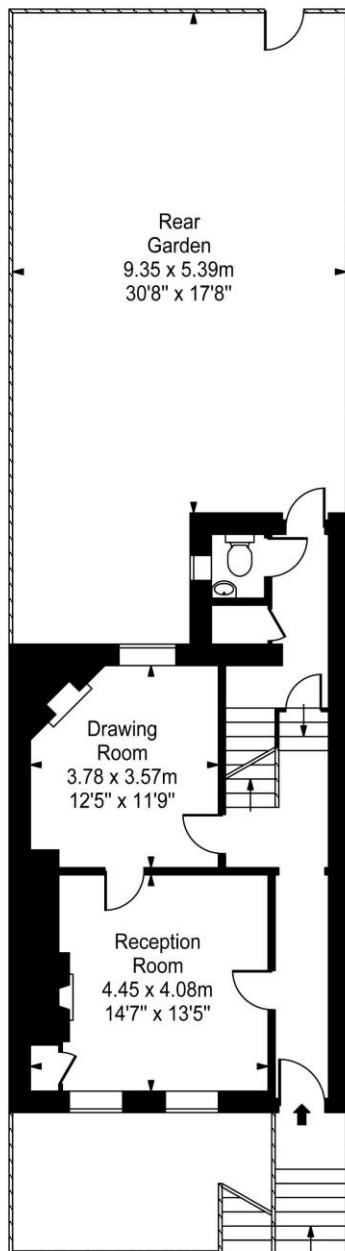
23a Friars Stile Road
Richmond
Surrey
TW10 6NH
richmondlettingsusers@chestertons.co.uk
02037583333
chestertons.co.uk

Sion Road

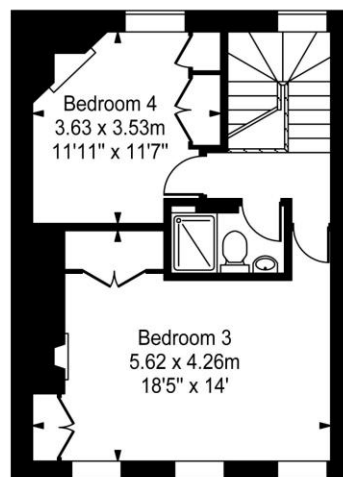
Approx. Gross Internal Area
185 Sq M - 1991 Sq Ft



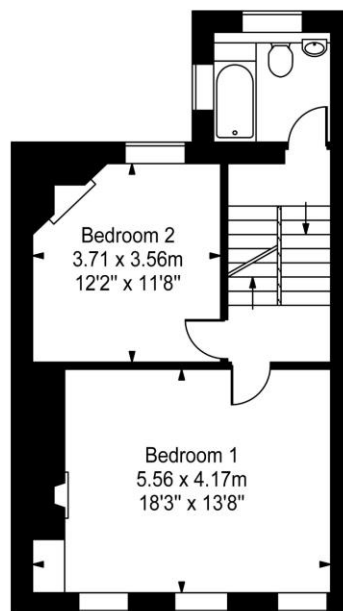
Lower Ground Floor



Upper Ground Floor



Second Floor



First Floor

Every attempt is made to assure accuracy, however measurements are approximate and for illustrative purposes only. Not to scale.
Floor plan by www.frameworkphotos.co.uk

