



# Church Road

Richmond, TW10

£13,000 per month  
(£3,000 per week)

An absolutely stunning six bedroom detached family home located a short walk to Richmond station and town centre.

**CHESTERTONS**





# Church Road

## Richmond, TW10

- Six Bedrooms
- Three Bathrooms
- Three Reception Rooms
- Large Rear Garden
- Off Street Parking
- Unfurnished





An absolutely stunning detached family home located a short walk to Richmond BR station & town centre. Finished sympathetically, to an extremely high standard with a modern twist, whilst keeping the character of this fantastic house. Comprising six bedrooms, three bathrooms and three reception rooms. The eat-in kitchen is very spacious with direct access to the large, private and secluded wonderful garden. There is off street parking for one car and side access. Available unfurnished.

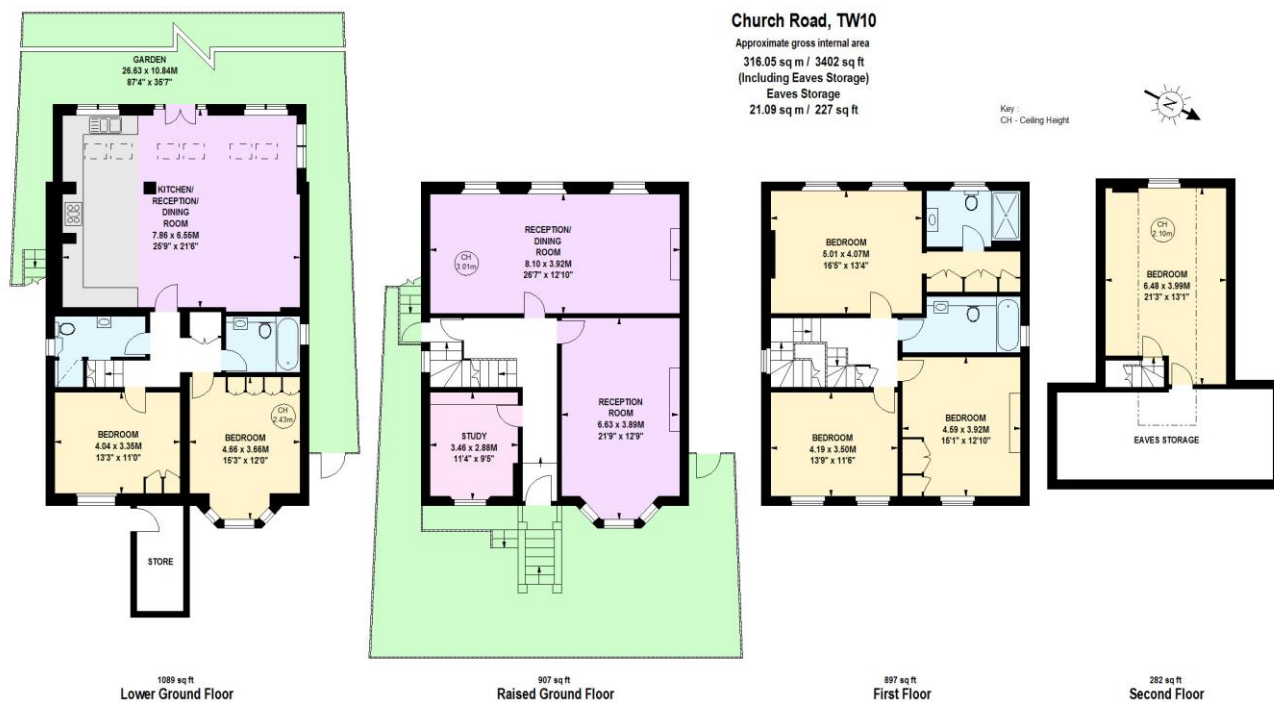
An absolutely stunning detached family home located a short walk to Richmond BR station & town centre. Finished sympathetically, to an extremely high standard with a modern twist, whilst keeping the character of this fantastic house. Comprising six bedrooms, three bathrooms and three reception rooms. The eat-in kitchen is very spacious with direct access to the large, private and secluded wonderful garden. There is off street parking for one car and side access. Available unfurnished. EPC = D.

**Minimum Term:** 5 Weeks  
**Deposit Required:** 12 months  
**Local Authority:** London Borough of Richmond upon Thames  
**Council Tax Band:** H  
**EPC Rating:** D  
**Unfurnished**

Energy Efficiency Rating		
	Current	Potential
Very energy efficient - lower running costs		
A (92-100)		
B (81-91)		81
C (69-80)		
D (55-68)	65	
E (39-54)		
F (21-38)		
Not energy efficient - higher running costs		
G (1-20)		
England, Scotland & Wales		EU Directive 2002/91/EC

### *Chestertons Richmond Lettings*

23a Friars Stile Road  
 Richmond  
 Surrey  
 TW10 6NH  
 richmondlettingsusers@chestertons.co.uk  
 02037583333  
 chestertons.co.uk



This floor plan is a representation for guidance purposes only, not for valuation.  
 Any figure is approximate and must not be relied on as a statement of fact.  
 Copyright of Wyatt Dixon Homes

**WYATT DIXON  
 HOMES**

