



Ridgway

Mount Ararat Road, TW10

£2,700 per month
(£623.08 per week)

A well-presented first floor apartment located within a popular and secure development on the upper slopes of Richmond Hill.



Ridgway

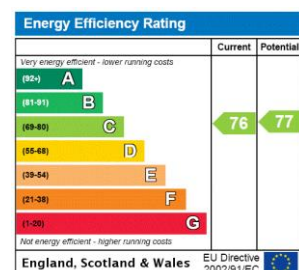
Mount Ararat Road, TW10

- Open-plan kitchen reception room
- Modern integrated kitchen
- Wood flooring through the living area
- Modern bathroom
- Council tax band E



A well-presented first floor apartment located within a popular and secure development on the upper slopes of Richmond Hill. The accommodation briefly comprises of; two spacious double bedrooms with a sliding door that separates the second bedroom and the reception room, a large open plan kitchen reception room that overlooks the communal gardens, private balcony and a modern bathroom. The property also benefits from a lift in the development. EPC = C

Minimum Term: 12 months
Deposit Required: 5 Weeks
Local Authority: London Borough of Richmond upon Thames
Council Tax Band: E
EPC Rating: C
Part Furnished

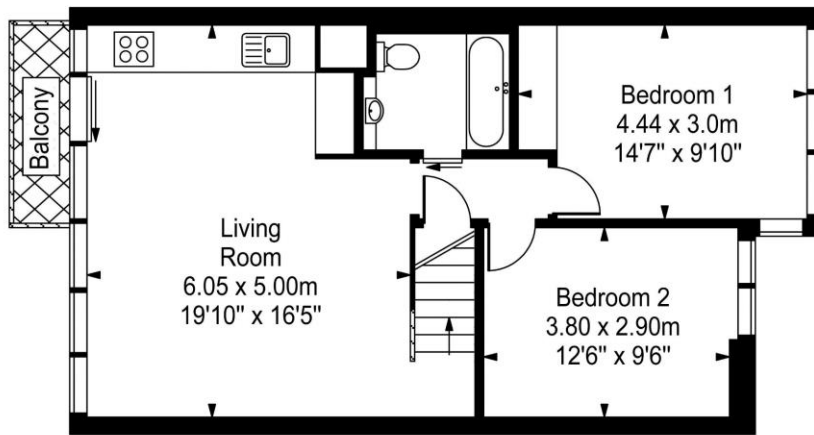


Chestertons Richmond Lettings

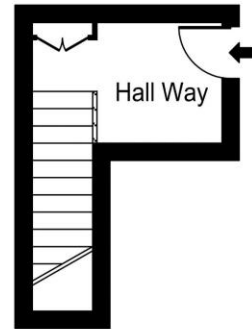
23a Friars Stile Road
 Richmond
 Surrey
 TW10 6NH
 richmondlettingsusers@chestertons.co.uk
 02037583333
 chestertons.co.uk

Ridgway

Approx. Gross Internal Area
68 Sq M - 731 Sq Ft



Second Floor



Third Floor

Every attempt is made to assure accuracy, however measurements are approximate and for illustrative purposes only. Not to scale.
Floor plan by www.frameworkphotos.co.uk

