



# Marlborough Road

Richmond, TW10

£5,750 per month  
(£1,326.92 per week)

A modern four bedroom apartment which is situated in a prime position on Richmond Hill.

CHESTERTONS





# Marlborough Road

## Richmond, TW10

- Four Bedrooms
- Three Bathrooms
- Open Plan Kitchen Reception Room
- Large Private Garden
- Private Entrance
- Richmond Hill





A modern four bedroom apartment which is situated in a prime position on Richmond Hill. The accommodation briefly comprises; four double bedrooms, two en-suite shower rooms and a further family bathroom. A bright and airy open plan kitchen/breakfast and reception room that then leads onto the sizable private garden via the patio doors. The property has a private entrance and allocated parking.

**Minimum Term:** 12 Months  
**Deposit Required:** 5 Five week  
**Local Authority:** London Borough of Richmond upon Thames  
**Council Tax Band:** F  
**EPC Rating:** C  
**Furnished**

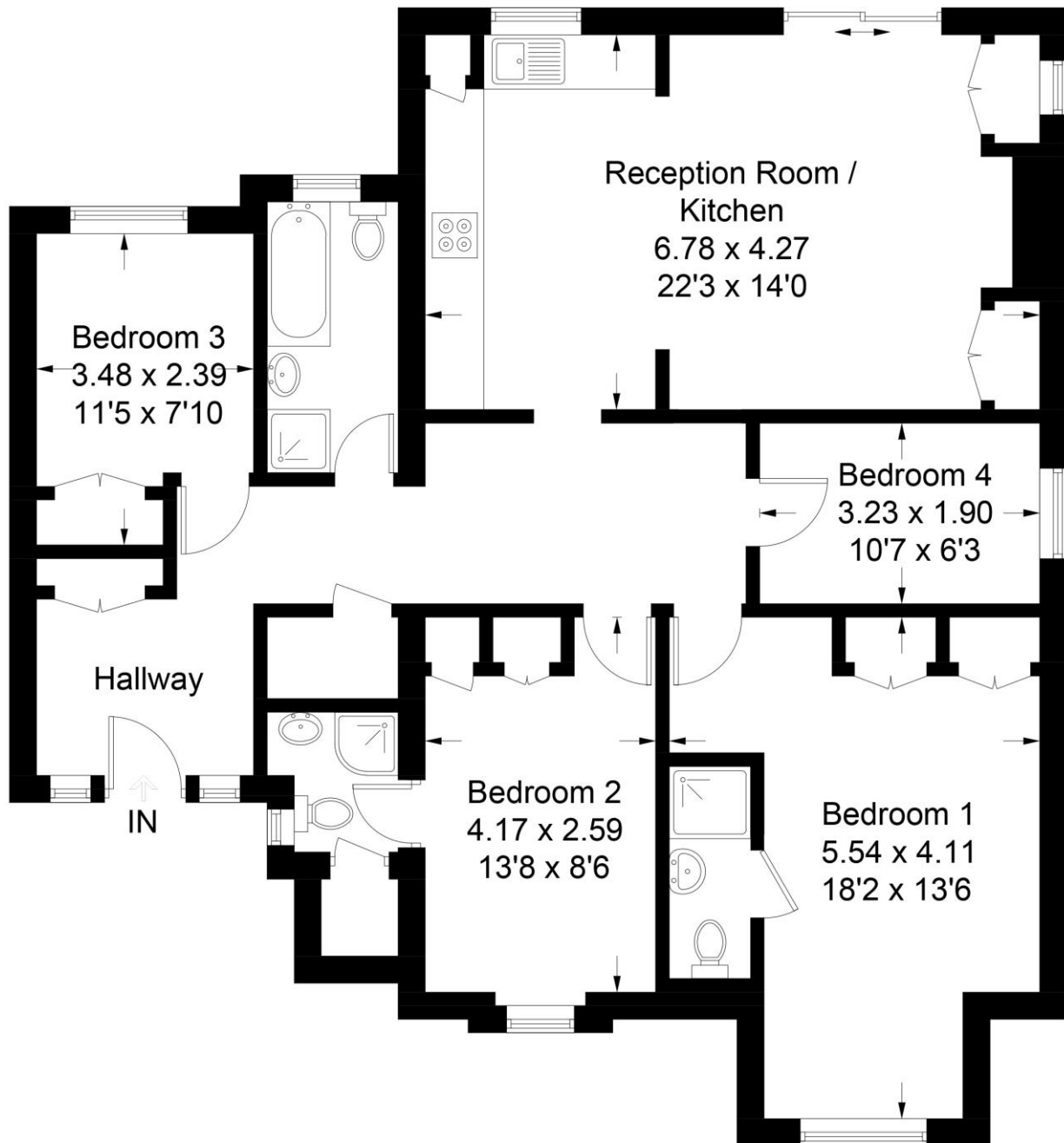
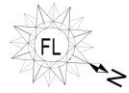
Energy Efficiency Rating		
	Current	Potential
Very energy efficient - lower running costs		
(94-100) <b>A</b>		
(81-93) <b>B</b>		
(69-80) <b>C</b>	72	79
(55-68) <b>D</b>		
(39-54) <b>E</b>		
(21-38) <b>F</b>		
(1-20) <b>G</b>		
Not energy efficient - higher running costs		
England, Scotland & Wales EU Directive 2002/91/EC		

### *Chestertons Richmond Lettings*

23a Friars Stile Road  
 Richmond  
 Surrey  
 TW10 6NH  
[richmondlettingsusers@chestertons.co.uk](mailto:richmondlettingsusers@chestertons.co.uk)  
 02037583333  
[chestertons.co.uk](http://chestertons.co.uk)

# Marlborough Road

Approximate Gross Internal Area = 108.6 sq m / 1169 sq ft



Featherstone Leigh Ltd

Every attempt is made to assure accuracy, however measurements are approximate and for illustrative purposes only. Not to scale. (ID906695)

