



# Earlsfield House

Royal Quarter, KT2

£2,200 per month  
(£507.69 per week)

A well-proportioned and incredibly bright two double bedroom luxury apartment, located within the ever popular, gated and lift serviced 'Royal Quarter' development, just moments from Kingston town centre.

**CHESTERTONS**





# Earlsfield House

## Royal Quarter, KT2

- 2 double bedroom apartment
- 2 bathrooms
- Private balcony
- Secure underground parking upon request
- Concierge and gym
- Within ¼ mile of the railway station



A beautifully presented and generously proportioned two double bedroom, two bathroom luxury apartment, situated within the highly sought-after Royal Quarter development — a secure, gated community with lift access, concierge service, and landscaped communal gardens.

Perfectly positioned just a short walk from Kingston Station, the property offers excellent transport links into Central London and beyond. You're also moments from Kingston's vibrant town centre, with its wide range of shops, restaurants, cafés, and the riverside.

A well-proportioned and incredibly bright two double bedroom luxury apartment, located within the ever popular, gated and lift serviced 'Royal Quarter' development, just moments from Kingston town centre. Situated on the third floor of this very well managed complex, this particular apartment offers two well-proportioned double bedrooms along with equally generous reception dining room and semi open plan kitchen complete with a range of integrated

**Minimum Term:** 12 months  
**Deposit Required:** 5 weeks  
**Local Authority:** Kingston Upon Thames  
**Council Tax Band:** E  
**EPC Rating:** B

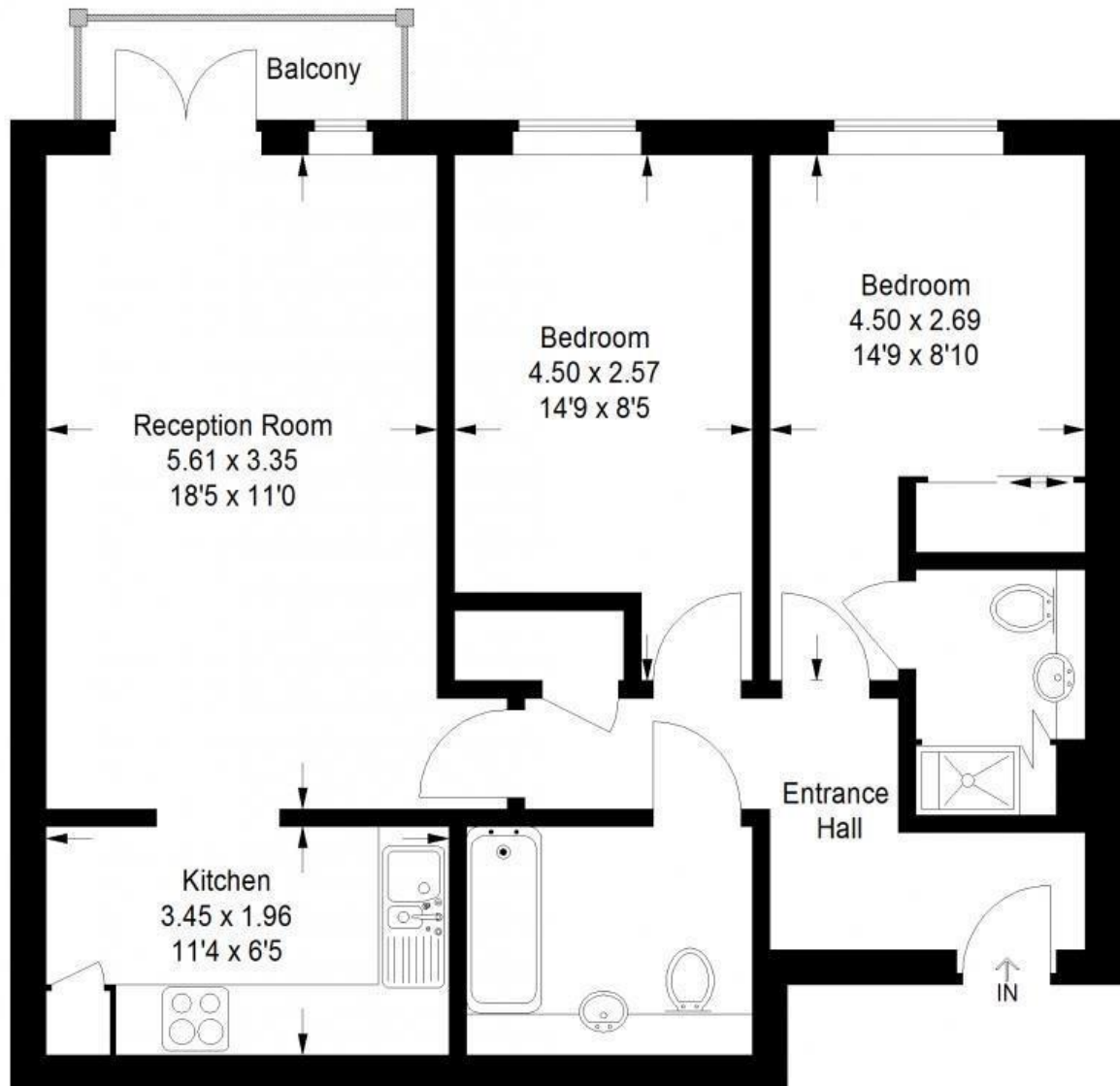
Energy Efficiency Rating		
	Current	Potential
Very energy efficient - lower running costs		
A (92-100)		
B (81-91)	83	88
C (69-80)		
D (55-68)		
E (39-54)		
F (21-38)		
G (1-20)		
Not energy efficient - higher running costs		
England, Scotland & Wales		EU Directive 2002/91/EC

### Chestertons Richmond Lettings

23a Friars Stile Road  
 Richmond  
 Surrey  
 TW10 6NH  
[richmondlettingsusers@chestertons.co.uk](mailto:richmondlettingsusers@chestertons.co.uk)  
 02037583333  
[chestertons.co.uk](http://chestertons.co.uk)

# Earlsfield House, KT2

Approx . Gross Internal Area :- 66 sq mt / 710 sq ft



Third Floor

Every attempt is made to assure accuracy, however measurements are approximate and for illustrative purposes only. Not to scale.