

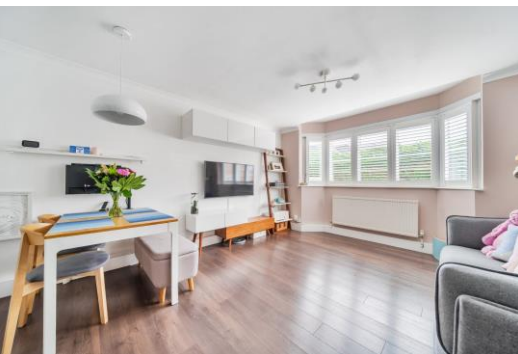


# Park Gardens

Kingston Upon Thames, KT2

£2,150 per month  
(£496.15 per week)

This well-presented 2-bedroom ground floor apartment offers a comfortable and practical living space in a prime Kingston location, just a short walk from Richmond Park.



# Park Gardens

Kingston Upon Thames, KT2

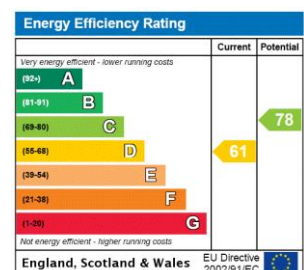
•



This well-presented 2-bedroom ground floor apartment offers a comfortable and practical living space in a prime Kingston location, just a short walk from Richmond Park. The property features two good-sized bedrooms with plenty of natural light, creating a bright and welcoming atmosphere. The open-plan living area is spacious and flows directly out to a private garden, offering a peaceful spot to relax or entertain.

The apartment also benefits from parking space, providing added convenience in this desirable area. Perfectly positioned for easy access to local shops, transport links, and the beautiful green spaces of Richmond Park, this apartment is a great choice for professionals or a small family

**Minimum Term:** 12 months  
**Deposit Required:** 5 weeks  
**Local Authority:** Kingston Upon Thames  
**Council Tax Band:**  
**EPC Rating:** D



### *Chestertons Richmond Lettings*

23a Friars Stile Road  
 Richmond  
 Surrey  
 TW10 6NH  
[richmondlettingsusers@chestertons.co.uk](mailto:richmondlettingsusers@chestertons.co.uk)  
 02037583333  
[chestertons.co.uk](https://www.chestertons.co.uk)

