



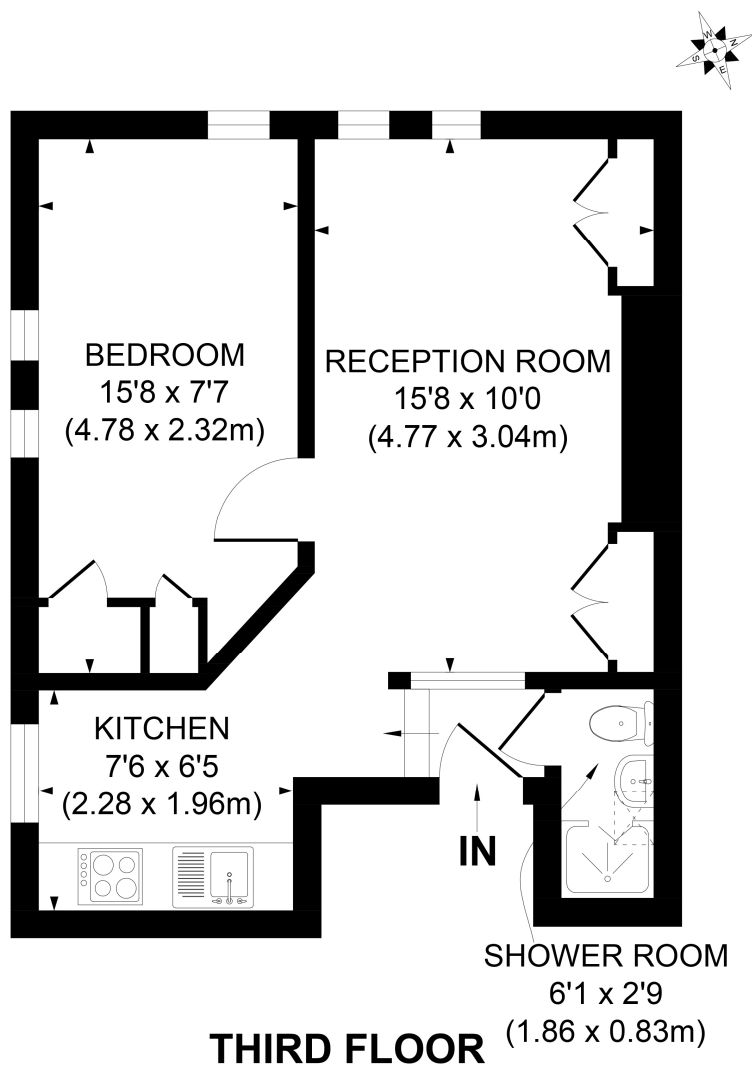
Onslow Road

Richmond, TW10

£1,300 pcm

A one bedroom top floor conversion flat on Richmond Hill. Comprising of a double bedroom, open plan reception and fitted kitchen. Conveniently located for the amenities of Richmond.

CHESTERTONS
Richmond



APPROX. GROSS INTERNAL FLOOR AREA 377 SQ. FT / 35.01 SQ. M

Illustration for identification purpose only, not to scale
All measurements are maximum, and includes wardrobes and window bays where applicable
Prepared by Pixangle ©. Tel 020 8870 2118

Tenure: Long Let
Furnished

Additional tenant charges apply
Tenancy Agreement Fee: £222
References per Tenant/Guarantor: £60
Inventory check (approx. £100 – £250 inc. VAT)
[chestertons.com/property-to-rent/applicable-fees](https://www.chestertons.com/property-to-rent/applicable-fees)

Energy Efficiency Rating		
	Current	Potential
Very energy efficient - lower running costs		
(92+) A		
(81-91) B		
(69-80) C		
(55-68) D		
(39-54) E		
(21-38) F	21	24
(1-20) G		
Not energy efficient - higher running costs		
England, Scotland & Wales		EU Directive 2002/91/EC

Chestertons Richmond Lettings

23a Friars Stile Road
Richmond
Surrey
TW10 6NH
lettings.richmond@chestertons.com
020 3758 3333
[chestertons.com](https://www.chestertons.com)



Chesterton Global Ltd trading as Chestertons for themselves and for the vendor of this property whose agents they are, give notice that (i) these particulars do not constitute any part of an offer or contract, (ii) all statements contained within these particulars are made without responsibility on the part of Chestertons or the vendor, (iii) whilst made in good faith, none of the statements contained within these particulars are to be relied upon as a statement or representation of fact, (iv) any intending purchasers must satisfy themselves by inspection or otherwise as to the correctness of each of the statements contained within these particulars, (v) the vendor does not make or give either Chestertons or any person in their employment any authority to make or give representation or warranty whatsoever in relation to this property. Wide angle lenses may be used. ©Copyright Chestertons | Chesterton Global Ltd | Registered Office 3rd Floor, Connaught House, 1-3 Mount Street, Mayfair, London, W1K 3NB Registered Company Number 05334580.