



Chester Avenue

Richmond, TW10

£15,000 per month
(£3,461.54 per week)

This exceptional 4-bedroom detached home offers an unparalleled level of luxury, privacy, and modern living.



Chester Avenue

Richmond, TW10

- Detached Family Home
- Modern Décor
- Outbuilding
- Sauna
- Driveway Parking
- Professionally Managed



This exceptional 4-bedroom detached home offers an unparalleled level of luxury, privacy, and modern living. Perfectly blending elegance and practicality, the property boasts spacious living areas, high-end finishes, and a beautifully landscaped garden, all just moments from the vibrant heart of Richmond.

The interior of the home is designed to impress, with a grand entrance hall that leads to a spacious, light-filled living room perfect for family gatherings and entertaining. The open-plan kitchen and dining area, featuring state-of-the-art appliances and sleek countertops, provides the ideal space for both everyday living and special occasions. Large windows throughout flood the property with natural light, creating a welcoming and airy atmosphere.

The first-floor main bedroom suite offers a luxurious retreat, complete with an en-suite bathroom. Three additional generously-sized bedrooms offer versatile spaces for family, guests, or home office needs, each with premium finishes that elevate the comfort and style of the home.

Minimum Term: 12 months
Deposit Required: 5 weeks
Local Authority: London Borough of Richmond upon Thames
Council Tax Band: G
EPC Rating: E
Part Furnished, Unfurnished

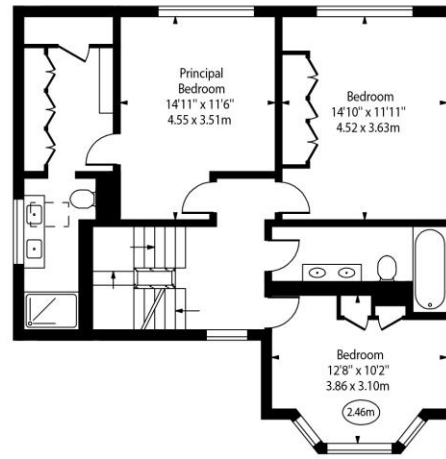
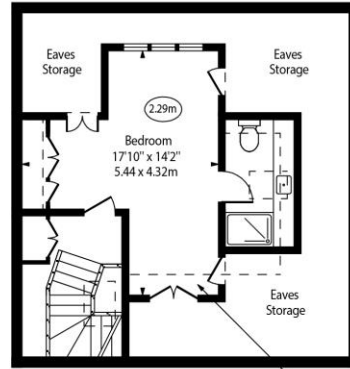
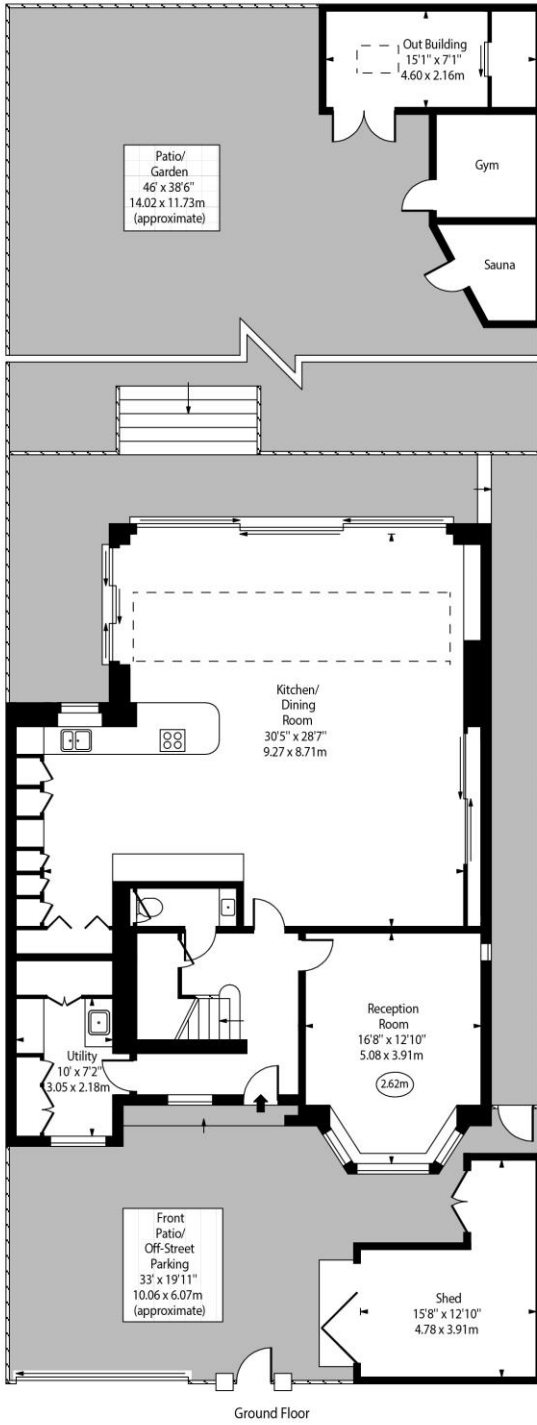
Chestertons Richmond Lettings

23a Friars Stile Road
Richmond
Surrey
TW10 6NH
richmondlettingsusers@chestertons.co.uk
02037583333
chestertons.co.uk

Hazledown,
Chester Avenue,
Richmond,
Surrey, TW10



○ - Ceiling Height



Approx Gross Internal Area 2405 Sq Ft - 223.42 Sq M
(Excluding Out Buildings)

Approx. Floor Area Including Restricted Heights 2705 Sq Ft - 251.29 Sq M
(Including Eaves Storage)
(Excluding Out Buildings)

Out Buildings Area 200 Sq Ft - 18.58 Sq M
(Including Gym & Sauna)

For Illustration Purposes Only - Not To Scale
www.goldlens.co.uk
Ref. No. 027025E

Chesterton UK Services Limited trading as Chestertons for themselves and for the vendor of this property whose agents they are, give notice that (i) these particulars do not constitute any part of an offer or contract, (ii) all statements contained within these particulars are made without responsibility on the part of Chestertons or the vendor, (iii) whilst made in good faith, none of the statements contained within these particulars are to be relied upon as a statement or representation of fact, (iv) any intending purchasers must satisfy themselves by inspection or otherwise as to the correctness of each of the statements contained within these particulars, (v) the vendor does not make or give either Chestertons or any person in their employment any authority to make or give representation or warranty whatsoever in relation to this property. Wide angle lenses may be used. ©Copyright Chestertons | Chesterton Global Ltd | Registered Office 40 Connaught Street, Hyde Park, London W2 2AB Registered Company Number 05334580.



This paper is
100% recyclable