



Richmond Hill Court
Richmond, TW10





A spacious and beautifully presented two double bedroom apartment in Richmond Hill Court, a prestigious development benefiting from onsite porter & residents tennis court.

- Two Bedrooms
- Newly Refurbished
- Lift Access
- Residents Tennis Court

£2,950 pcm

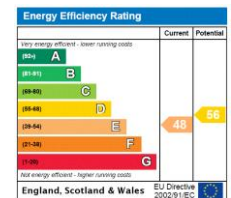
Additional tenant charges apply (fees apply to non-AST tenancies only)

Tenancy Agreement Fee: £300

References per Tenant/Guarantor: £60

Inventory check (approx. £100 – £250 inc. VAT)

chestertons.co.uk/property-to-rent/applicable-fees



Minimum Term: 12 months

Deposit Required: £3,403.85

Local Authority: London Borough Of Richmond Upon Thames

Council Tax Band: F

EPC Rating: E

Chestertons Richmond Lettings

23a Friars Stile Road

Richmond

Surrey

TW10 6NH

richmond@chestertons.co.uk

02037583333

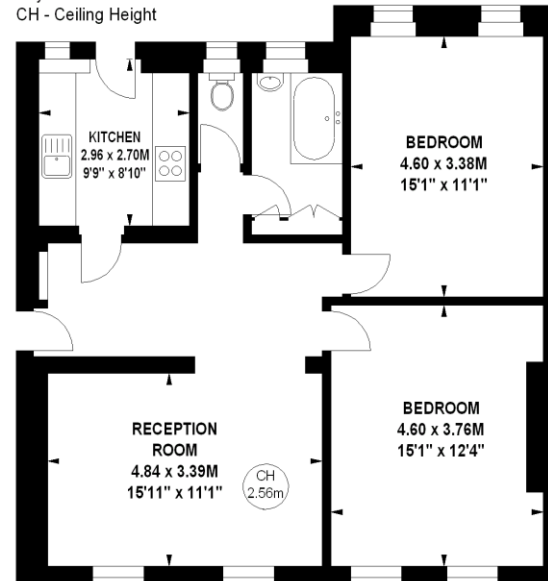
Richmond Hill Court, TW10

Approximate gross internal area
79.43 sq m / 855 sq ft
(Excluding Garage)



Key :

CH - Ceiling Height



Fifth Floor

The floor plan is not to scale and measurements and areas shown are approximate and therefore should be used for illustrative purposes only. The plan has been prepared in accordance with the RICS code of Measuring Practice and whilst we have confidence in the information produced, it must not be relied on.

If there is any aspect of particular importance, you should carry out or commission your own inspection of the property.

Copyright of FeaturePRO.

