



# Springfield Avenue

Hampton, TW12

£2,200 per month  
(£507.69 per week)

A three bedroom family home, located in a friendly and peaceful cul-de-sac.

**CHESTERTONS**





# Springfield Avenue

## Hampton, TW12

- Three Bedrooms
- Terraced House
- Garage by Negotiation
- Two Bathrooms
- Private Garden
- Unfurnished

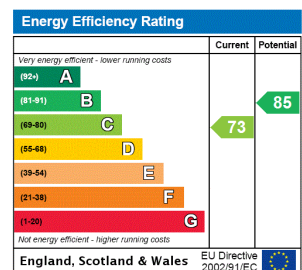




A three bedroom family home, located in a friendly and peaceful cul-de-sac.

The property consists of a spacious living room with French doors on to a lovely and well maintained rear garden with lawn. The accommodation, arranged on the first floor offers three bedrooms with the principal bedroom featuring a spacious en-suite shower room in addition to the family bathroom. On the ground floor in addition to a fitted kitchen overlooking the rear garden there is also a separate WC off the hallway and throughout the house there is excellent storage including under the stairs, on the first floor hallway plus fitted wardrobes in the bedrooms.

**Minimum Term:** 12 months  
**Deposit Required:** £2,538.46  
**Local Authority:** London Borough Of Richmond Upon Thames  
**Council Tax Band:** E  
**EPC Rating:** C  
**Unfurnished**



### Chestertons Richmond Lettings

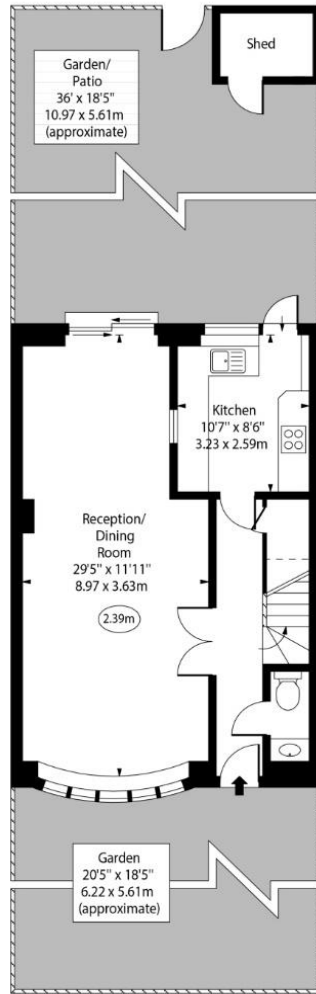
23a Friars Stile Road  
 Richmond  
 Surrey  
 TW10 6NH  
 richmond@chestertons.co.uk  
 02037583333  
 chestertons.co.uk

Additional tenant charges apply (fees apply to non-AST tenancies only)  
 Tenancy Agreement Fee: £300  
 References per Tenant/Guarantor: £60  
 Inventory check (approx. £100 – £250 inc. VAT)  
[chestertons.co.uk/property-to-rent/applicable-fees](http://chestertons.co.uk/property-to-rent/applicable-fees)

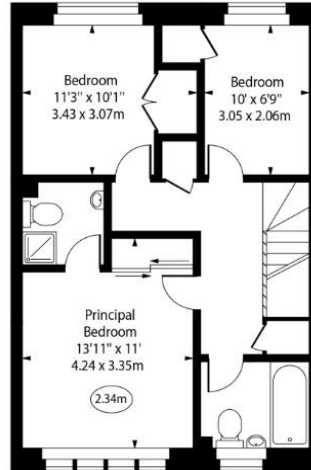
Springfield Avenue,  
Hampton,  
Middlesex, TW12



○ - Ceiling Height



Ground Floor



First Floor

Approx Gross Internal Area 1058 Sq Ft - 98.29 Sq M

For Illustration Purposes Only - Not To Scale  
www.goldlens.co.uk  
Ref. No. 024404E

