



# Onslow Road

Richmond, TW10

£1,975 per month  
(£455.77 per week)

A spacious top floor apartment located on a popular residential road on Richmond Hill.



# Onslow Road

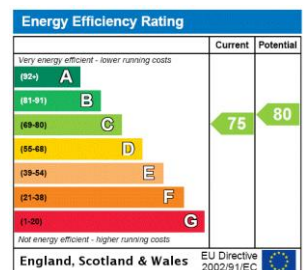
## Richmond, TW10

- Popular Residential Road
- Spacious Top Floor Apartment
- Extremely Bright
- Spacious Reception Room
- Open-plan kitchen
- Furnished



A spacious top floor apartment located on a popular residential road on Richmond Hill. The property is bright and airy and the accommodation briefly comprises; a large and extremely bright reception room and open-plan kitchen, double bedroom and bathroom. Available furnished.

**Minimum Term:** 12 months  
**Deposit Required:** £2,278.85  
**Local Authority:** London Borough Of Richmond Upon Thames  
**Council Tax Band:** D  
**EPC Rating:** C  
**Furnished**



**Chestertons FSL Richmond Lettings**

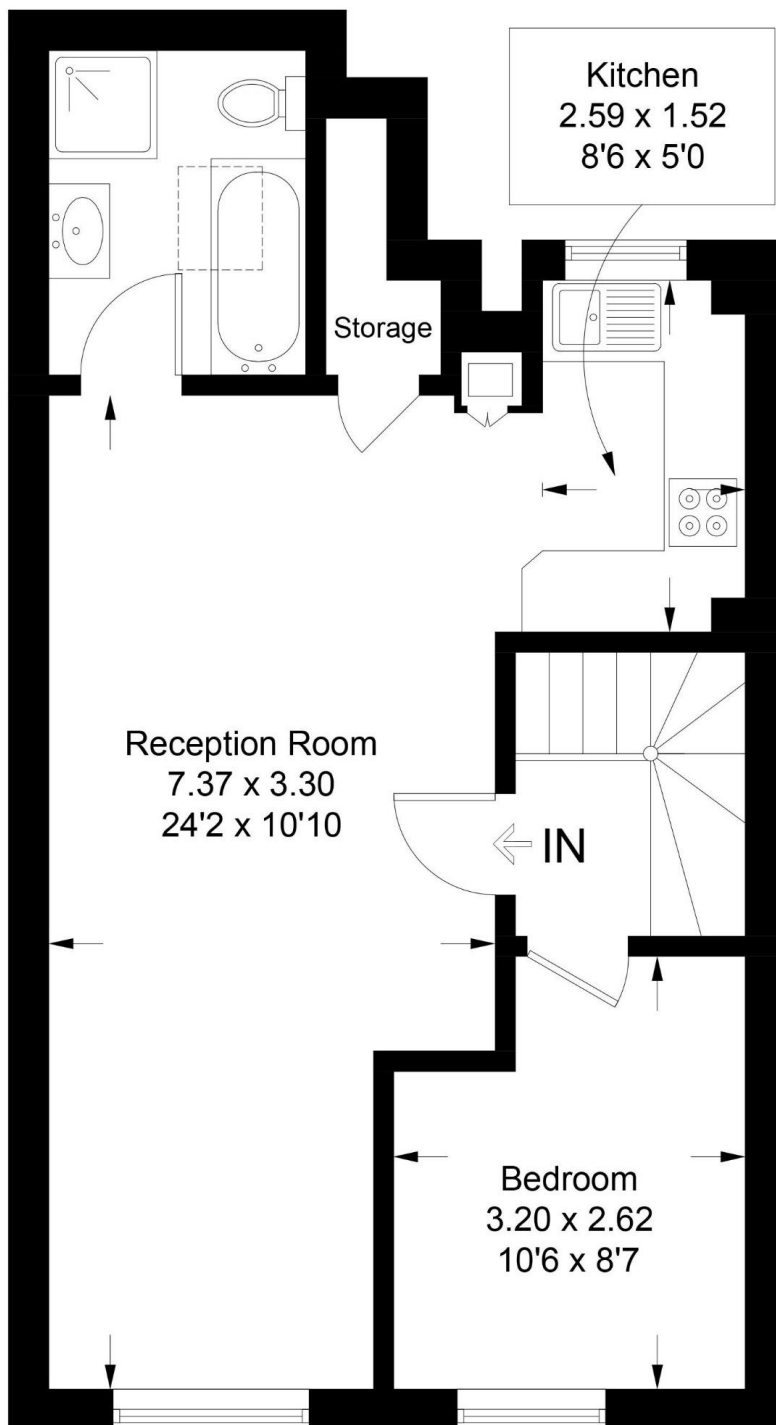
23a Friars Stile Road  
 Richmond  
 Surrey  
 TW10 6NH

Additional tenant charges apply (fees apply to non-AST tenancies only)  
 Tenancy Agreement Fee: £300  
 References per Tenant/Guarantor: £60  
 Inventory check (approx. £100 – £250 inc. VAT)  
[chestertons.co.uk/property-to-rent/applicable-fees](http://chestertons.co.uk/property-to-rent/applicable-fees)

[chestertons.co.uk](http://chestertons.co.uk)

# Onslow Road

Approximate Gross Internal Area = 45.8 sq m / 493 sq ft



Featherstone Leigh Ltd

Every attempt is made to assure accuracy, however measurements are approximate and for illustrative purposes only. Not to scale. (ID631307)

