



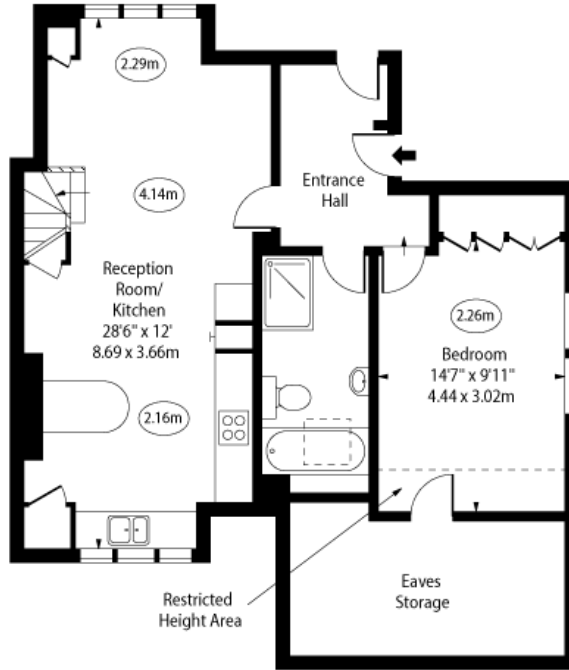
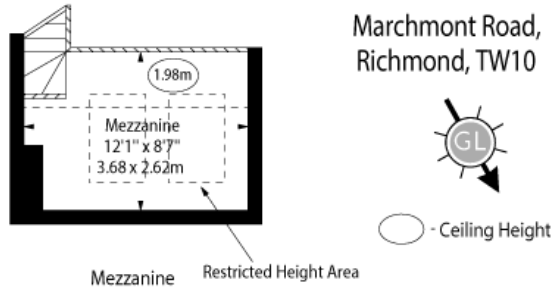
Marchmont Road

Richmond, TW10

£2,500 per month
(£576.92 per week)

A well-presented one bedroom apartment located on one of Richmond's premier roads and a short walk to Richmond town centre.

CHESTERTONS



Second Floor

Approx Gross Internal Area 673 Sq Ft - 62.52 Sq M

Approx. Floor Area Including Restricted Heights 875 Sq Ft - 81.29 Sq M
(Including Eaves Storage)

For Illustration Purposes Only - Not To Scale
www.goldlens.co.uk
Ref. No. 024269E

Minimum Term: 12 months
Deposit Required: 5 weeks
Local Authority: London Borough Of Richmond Upon Thames
Council Tax Band: D
EPC Rating: C
Unfurnished

Energy Efficiency Rating		Current	Potential
Very energy efficient - lower running costs			
(92+)	A		
(81-91)	B		
(69-80)	C	72	74
(55-68)	D		
(39-54)	E		
(21-38)	F		
(1-20)	G		
Not energy efficient - higher running costs			
England, Scotland & Wales		EU Directive 2002/91/EC	

Chestertons FSL Richmond Lettings

23a Friars Stile Road
Richmond
Surrey
TW10 6NH

Additional tenant charges apply (fees apply to non-AST tenancies only)

Tenancy Agreement Fee: £300

References per Tenant/Guarantor: £60

Inventory check (approx. £100 – £250 inc. VAT)

chestertons.co.uk/property-to-rent/applicable-fees

Chesterton Global Ltd trading as Chestertons for themselves and for the vendor of this property whose agents they are, give notice that (i) these particulars do not constitute any part of an offer or contract, (ii) all statements contained within these particulars are made without responsibility on the part of Chestertons or the vendor, (iii) whilst made in good faith, none of the statements contained within these particulars are to be relied upon as a statement or representation of fact, (iv) any intending purchasers must satisfy themselves by inspection or otherwise as to the correctness of each of the statements contained within these particulars, (v) the vendor does not make or give either Chestertons or any person in their employment any authority to make or give representation or warranty whatsoever in relation to this property. Wide angle lenses may be used. ©Copyright Chestertons | Chesterton Global Ltd | Registered Office 40 Connaught Street, Hyde Park, London W2 2AB Registered Company Number 05334580.



This paper is
100% recyclable