



Bedford Court

Richmond, TW9

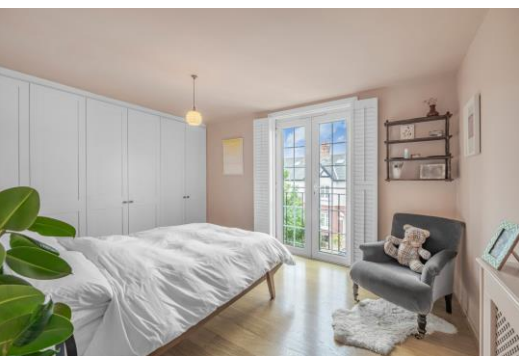
Guide Price £475,000

This two double bedroom apartment has a large reception room with ample space for seating, dining and even a home office. Flooded with natural light from the Juliet balcony.

A separate kitchen has space for a breakfast/dining area. The bathroom is well appointed throughout with a bath and shower above.

The two double bedrooms are a great size with the principal bedroom having large built-in wardrobes. There is excellent storage both within the apartment and via separate storage cupboards including your own private locked storage cupboards including a large cupboard on the ground floor that is ideal for secure bike storage.

Grena Road is located within a five-minute walk of North Sheen Station, a ten-minute walk to Richmond Park and a fifteen-minute walk to the centre of Richmond with access to the river, the green and a wide array of shops and restaurants.



Bedford Court

Richmond, TW9

- TWO DOUBLE BEDROOMS
- REFURBISHED
- BIKE STORAGE



Tenure: Leasehold 172 years

Service Charge: To be confirmed

Ground Rent: £10 per annum

Local Authority: Richmond upon Thames

Council Tax Band: D

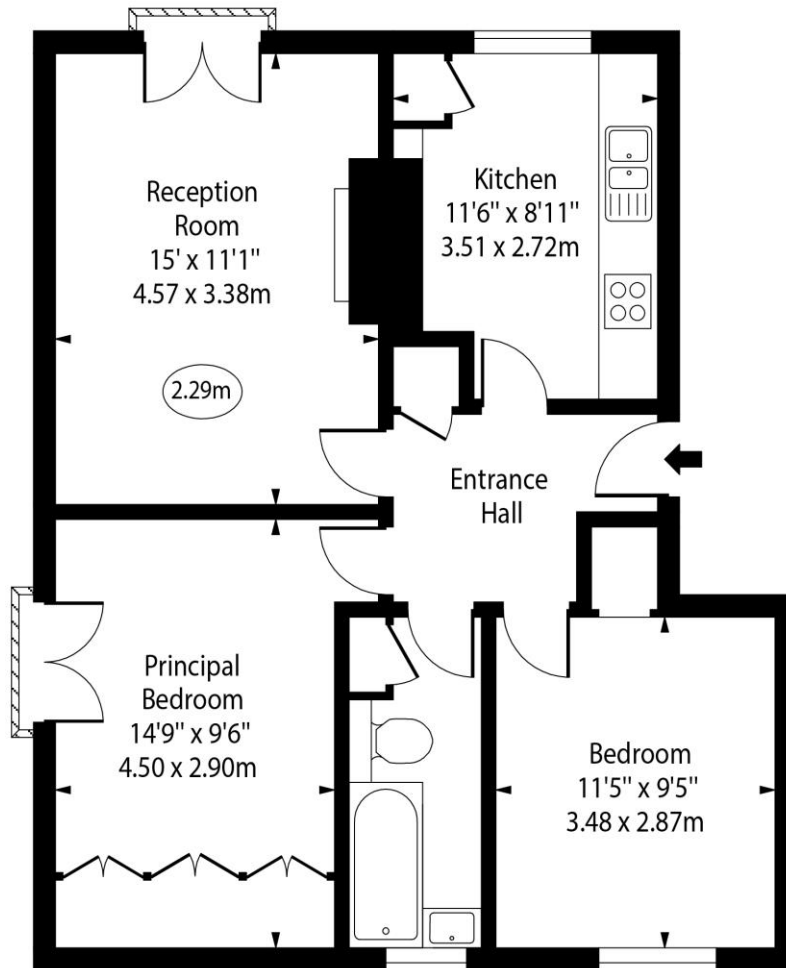
Score	Energy rating	Current	Potential
92+	A		
81-91	B		
69-80	C		
55-68	D	66 D	75 C
39-54	E		
21-38	F		
1-20	G		

Chestertons Richmond Sales

23a Friars Stile Road
 Richmond
 Surrey
 TW10 6NH
 richmond@chestertons.co.uk
 020 3758 3222
 chestertons.co.uk

Bedford Court,
Grena Road,
Richmond, TW9

○ - Ceiling Height



Second Floor

Approx Gross Internal Area 654 Sq Ft - 60.76 Sq M

Every attempt has been made to ensure the accuracy of the floor plan shown. However, all measurements, fixtures, fittings, and data shown are approximate interpretations and for illustrative purposes only.

Measured according to the RICS IPMS 2. Not To Scale.

www.goldlens.co.uk

Ref. No. 027935E

