



Ridgway

Mount Ararat Road, TW10

Asking Price £600,000

Nestled in the heart of Richmond Hill, this two-bedroom flat offers spacious living and a private balcony in a prime location. With easy access to the town center and transport links to central London.

CHESTERTONS



Ridgway

Mount Ararat Road, TW10

- Private Balcony
- Allocated Parking Space
- Richmond Hill
- Share of Freehold
- Excellent Transport Links
- Walking Distance to Richmond Park



This delightful two-bedroom flat, located in the sought-after Ridgway of Richmond Hill, offers an excellent blend of modern living and convenience. Benefiting from a share of freehold, this well-maintained property features spacious living areas, a private balcony, and an abundance of natural light.

The flat comprises two generously-sized bedrooms, perfect for both relaxation and productivity, and a comfortable living space that opens out onto the balcony – ideal for enjoying your morning coffee or evening sunset. The fully equipped kitchen is ready for you to create delicious meals and entertain guests, while the modern bathroom completes the home with a clean, fresh feel. The flat also benefits from study space, unique to the ground floor flats in this block.

Positioned just a short walk from Richmond town centre, you'll have easy access to a fantastic selection of shops, cafes, restaurants, and local amenities. With excellent transport links nearby, including Richmond train station, you'll have quick and effortless connections to central London and beyond. Whether you're commuting or simply enjoying the best of Richmond, this location offers

Tenure: Share of Freehold
Service Charge: £3000 (£250 paid monthly)
Ground Rent: £0
Local Authority: London Borough of Richmond upon Thames
Council Tax Band: E

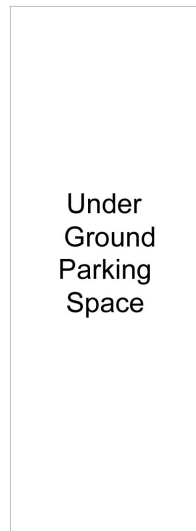
| Score | Energy rating | Current | Potential |
|-------|---------------|---------|-----------|
| 92+ | A | | |
| 81-91 | B | | |
| 69-80 | C | | |
| 55-68 | D | 66 D | 69 D |
| 39-54 | E | | |
| 21-38 | F | | |
| 1-20 | G | | |

Chestertons Richmond Sales

23a Friars Stile Road
Richmond
Surrey
TW10 6NH
richmond@chestertons.co.uk
020 3758 3222
chestertons.co.uk

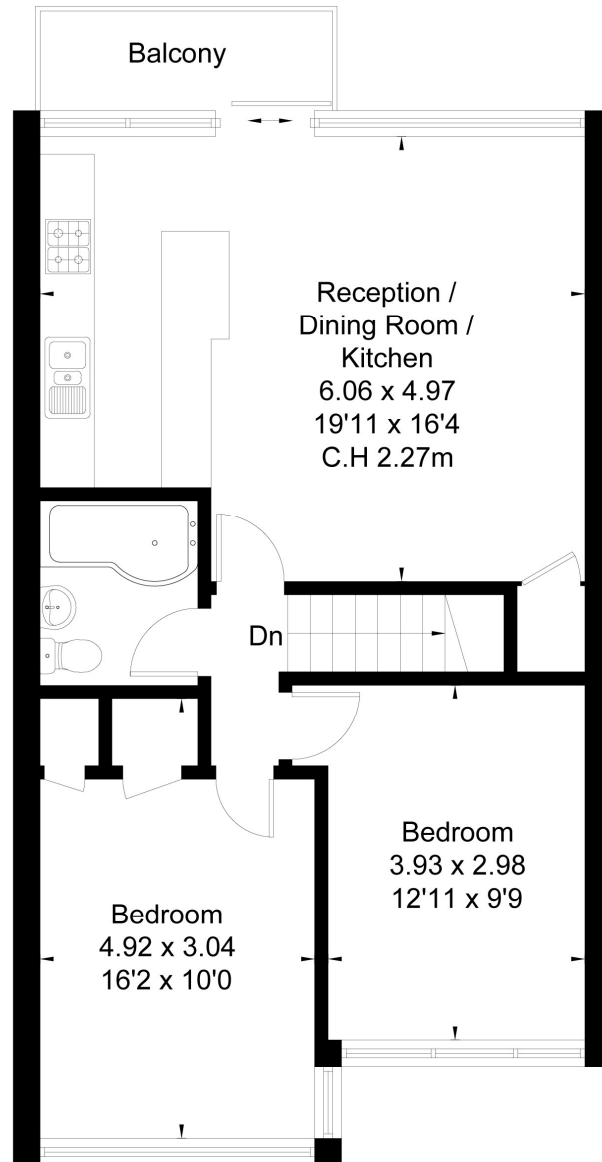
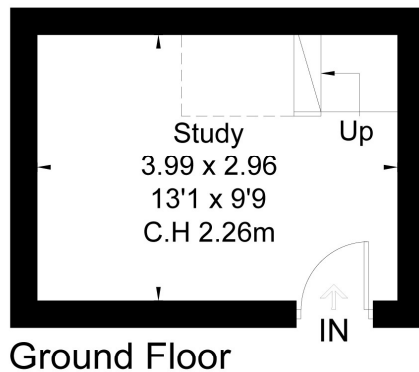
MOUNT ARARAT ROAD, RICHMOND, TW10

Approximate Floor Area = 76.1 sq m / 819 sq ft



(Not Shown In Actual
Location / Orientation)

[] = Reduced head height below 1.5m



First Floor



This floor plan has been drawn in accordance with RICS Property Measurement 2nd edition.
All measurements, including the floor area, are approximate and for illustrative purposes only @fourwalls-group.com #90653



This paper is
100% recyclable