



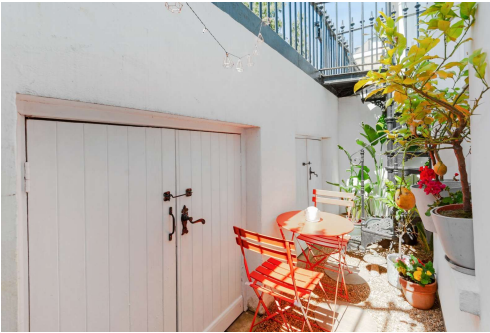
Richmond Hill

Richmond, TW10

Asking Price £1,100,000

A well-located 2-bedroom, 2-bathroom apartment in Richmond Hill, featuring a peaceful communal garden and excellent transport links to Central London.

CHESTERTONS



Richmond Hill

Richmond, TW10

- Communal Garden
- Richmond Hill Village
- Lower Ground Floor
- Victorian



This 2-bedroom, 2-bathroom apartment at Stuart Court in Richmond Hill offers a fantastic living opportunity with a peaceful communal garden and private courtyard, perfect for outdoor relaxation. Ideally located, the property is just a short walk from Richmond station, providing excellent transport links into Central London. Local amenities, including shops, cafes, and parks, are all within easy reach, while the beautiful Richmond Park is just a stone's throw away for nature lovers. This apartment combines convenience, comfort, and a tranquil setting, making it an ideal home in a prime location. Please note the EPC shown is outdated, this will be updated shortly.

In accordance with Section 21 of The Estate Agents Act 1979 we are obliged to declare that the vendors of this property are related to an employee of Chestertons

Tenure: 953 years left on lease
Service Charge: £3653.96
Ground Rent: £0
Local Authority: London Borough of Richmond upon Thames
Council Tax Band: E

Score	Energy rating	Current	Potential
92+	A		
81-91	B		
69-80	C	72 C	74 C
55-68	D		
39-54	E		
21-38	F		
1-20	G		

Chestertons Richmond Sales

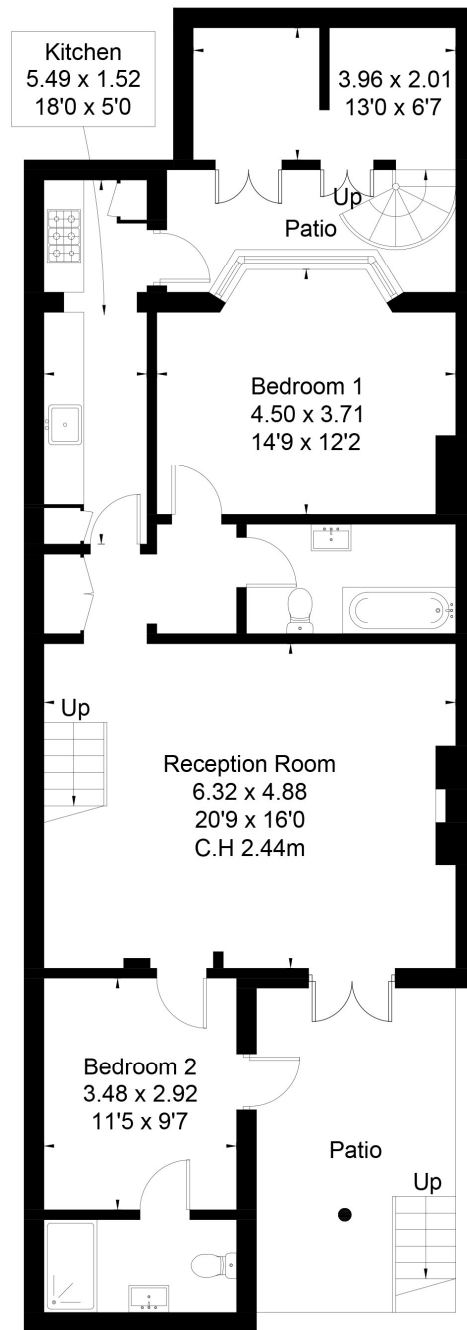
23a Friars Stile Road
 Richmond
 Surrey
 TW10 6NH
richmond@chestertons.co.uk
 020 3758 3222
[chestertons.co.uk](https://www.chestertons.co.uk)

STUART COURT RICHMOND, TW10

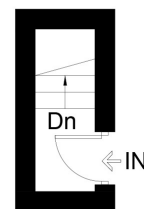
Approximate Floor Area = 83.6 sq m / 900 sq ft

Outbuilding = 7.9 sq m / 85 sq ft

Total = 91.5 sq m / 985 sq ft



Lower Ground Floor



Upper Ground Floor



This floor plan has been drawn in accordance with RICS Property Measurement 2nd edition.
All measurements, including the floor area, are approximate and for illustrative purposes only @djd.london #92129

