



Star & Garter House

Richmond Hill, TW10

Asking Price £675,000

A superb and unique one bedroom apartment located in the Star and Garter development with an underground parking space. EPC=D

CHESTERTONS



Star & Garter House

Richmond Hill, TW10

- Stunning one bedroom apartment
- Iconic Star and Garter House
- Stunning views over parkland
- Gym, swimming pool and more



A superb and unique one bedroom apartment located in the Star and Garter development with an underground parking space. The apartment has views over Petersham Meadows and comprises; a large double bedroom, modern bathroom, with marble worktops and Villeroy and Boche sanitary wear, reception room with open-plan handleless bespoke kitchen and Miele appliances with Miele induction hob. The apartment has intelligent mood lighting system, hyper optic WIFI, multi room audio system and comfort cooling system all controlled by a touch panel in the living room. The development is manned by a 24hr concierge service which also provides a town car service. There is a communal swimming pool with jacuzzi, gym, treatment rooms, hot beds and changing rooms in the central core of the building. This area leads out to the immaculate and well maintained communal gardens and terrace with stunning views over the River Thames, Twickenham stadium and sights of Turner's view, the only protected view by parliament in the UK. There is a BBQ area that can be hired out along with a cinema that can also be hired to residents.

Tenure: Leasehold 989 years

Service Charge: £12,000

Ground Rent: £251

Local Authority: Richmond Upon Thames

Council Tax Band: E

Energy Efficiency Rating		Current	Potential
Very energy efficient - lower running costs			
(92-100)	A		
(81-91)	B		
(69-80)	C		
(55-68)	D	62	62
(39-54)	E		
(21-38)	F		
(1-20)	G		
Not energy efficient - higher running costs			
England, Scotland & Wales		EU Directive 2002/91/EC	

Chestertons Richmond Sales

23a Friars Stile Road

Richmond

Surrey

TW10 6NH

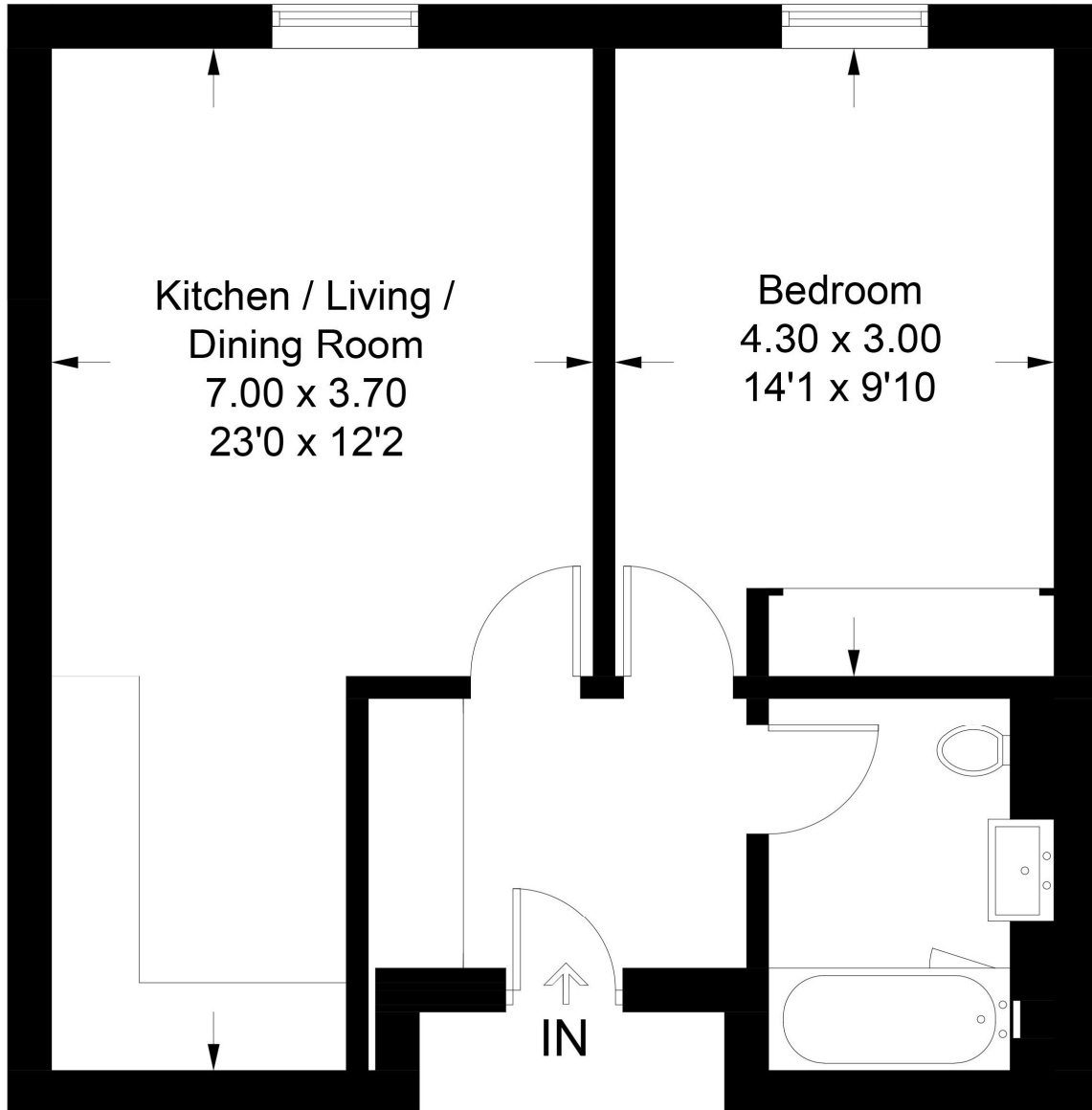
richmond@chestertons.co.uk

020 3758 3222

chestertons.co.uk

Star and Garter

Approx . Gross Internal Area = 47 sq mt / 506 sq ft



Featherstone Leigh Ltd

Every attempt is made to assure accuracy, however measurements are approximate and for illustrative purposes only. Not to scale.(310459)

Chesterton UK Services Limited trading as Chestertons for themselves and for the vendor of this property whose agents they are, give notice that (i) these particulars do not constitute any part of an offer or contract, (ii) all statements contained within these particulars are made without responsibility on the part of Chestertons or the vendor, (iii) whilst made in good faith, none of the statements contained within these particulars are to be relied upon as a statement or representation of fact, (iv) any intending purchasers must satisfy themselves by inspection or otherwise as to the correctness of each of the statements contained within these particulars, (v) the vendor does not make or give either Chestertons or any person in their employment any authority to make or give representation or warranty whatsoever in relation to this property. Wide angle lenses may be used. ©Copyright Chestertons | Chesterton UK Services Limited | Registered Office 40 Connaught Street, Hyde Park, London W2 2AB Registered Company Number 05334580.



This paper is
100% recyclable