



Onslow Road
Richmond, TW10

CHESTERTONS



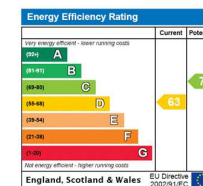


This split level, two bedroom, Victorian apartment is situated on the top-floor of this highly sought-after attractive building in the heart of Richmond Hill village. The property is light and airy with wonderful panoramic views from the top of Richmond Hill.

Located between Richmond town centre and the world-famous Richmond Park, Richmond Hill is a small community with a beautiful village at its heart. The village perfectly balances city and country living thanks to the spacious green spaces and easy London transport links. An ideal location for families, Richmond Hill has outstanding state and private school options, including The Vineyard, King's House, Old Vicarage and Marshgate Primary. You'll find everyday amenities such as dry cleaning, smaller supermarkets and coffee spots on your doorstep alongside a selection of pubs, cafes and restaurants. Local favourites include the Richmond Hill Bakery, The Marlborough pub and La Luna di Luca restaurant. Duck Pond Market, on the scenic riverside, sells ethically-sourced local food, art and crafts every weekend. Richmond town centre offers a wider range of shops, from independent boutiques in cobbled lanes to leading High Street brands, along with a large Waitrose supermarket.

- No Onward Chain
- Being Sold With An Extended Lease
- Gated Development
- Allocated Parking
- Access To Great Transport Links

Asking Price £650,000



Tenure: Share of Freehold 951 years 3 months

Service Charge: £0 payable on as and when basis, reviewed annually - shared between

Ground Rent: £1

Local Authority: Richmond upon Thames

Council Tax Band: E

Chestertons Richmond Sales

23a Friars Stile Road

Richmond

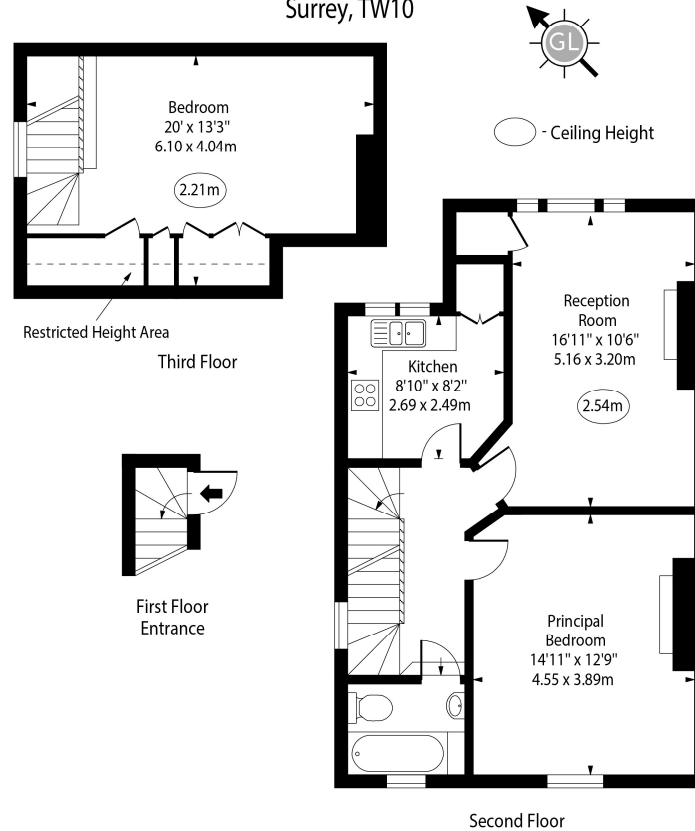
Surrey

TW10 6NH

richmond@chestertons.co.uk

020 3758 3222

Onslow Road,
Richmond,
Surrey, TW10



Approx Gross Internal Area 854 Sq Ft - 79.34 Sq M
Approx. Floor Area Including Restricted Heights 872 Sq Ft - 81.01 Sq M

For Illustration Purposes Only - Not To Scale
www.goldlens.co.uk
Ref. No. 026628E

Chesterton UK Services Limited trading as Chestertons for themselves and for the vendor of this property whose agents they are, give notice that (i) these particulars do not constitute any part of an offer or contract, (ii) all statements contained within these particulars are made without responsibility on the part of Chestertons or the vendor, (iii) whilst made in good faith, none of the statements contained within these particulars are to be relied upon as a statement or representation of fact, (iv) any intending purchasers must satisfy themselves by inspection or otherwise as to the correctness of each of the statements contained within these particulars, (v) the vendor does not make or give either Chestertons or any person in their employment any authority to make or give representation or warranty whatsoever in relation to this property. Wide angle lenses may be used. ©Copyright Chestertons | Chesterton UK Services Limited | Registered Office 40 Connaught Street, Hyde Park, London W2 2AB Registered Company Number 05334580.

