



Vine Cottages

Lancaster Park, TW10

Asking Price £1,000,000

A three bedroom, two bathroom townhouse in Richmond, close to Terrace Gardens and Richmond Park.

CHESTERTONS



Vine Cottages

Lancaster Park, TW10

- Three bedroom townhouse
- Richmond Hill location
- Gated development
- Off street parking



A three bedroom two bathroom townhouse in Richmond, close to Terrace Gardens and Richmond Park.

This property offers accommodation over three floors and includes a large open plan reception/modern fully fitted kitchen. The primary bedroom is on the first floor with an en-suite bathroom and dressing area, while the top floor has the two further double bedrooms and a shower room.

This wonderful property is being sold with no onward chain and would ideally make a great home for both residential buyers and also a buy to let investor alike.

Tenure: Freehold

Service Charge: £0

Ground Rent: £0

Local Authority: Richmond upon Thames

Council Tax Band: F

Energy Efficiency Rating		
	Current	Potential
Very energy efficient - lower running costs		
A (92-100)		
B (81-91)		89
C (69-80)	74	
D (55-68)		
E (39-54)		
F (21-38)		
Not energy efficient - higher running costs		
G (1-20)		
England, Scotland & Wales		EU Directive 2002/91/EC

Chestertons Richmond Sales

23a Friars Stile Road

Richmond

Surrey

TW10 6NH

richmond@chestertons.co.uk

020 3758 3222

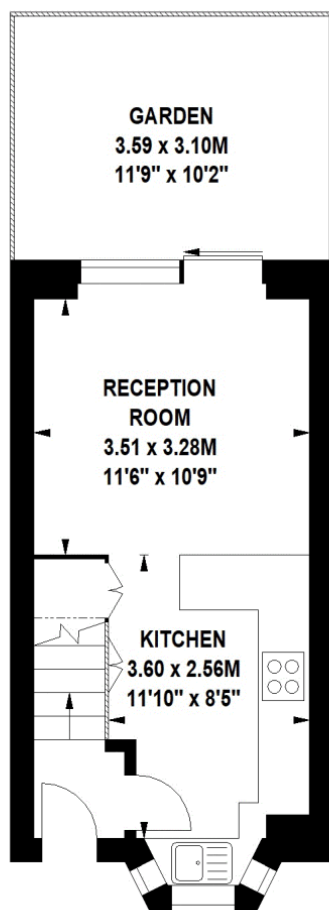
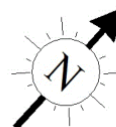
chestertons.co.uk

Vine Cottages, TW10

Approximate gross internal area

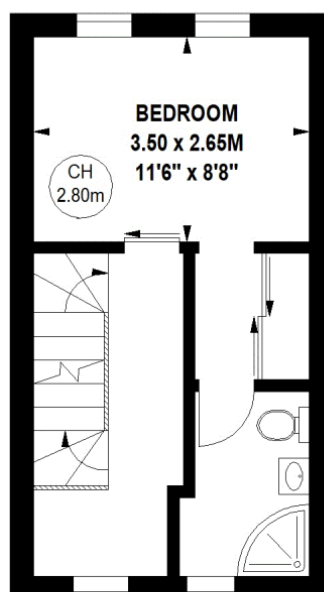
72.28 sq m / 778 sq ft

Key :
CH - Ceiling Height



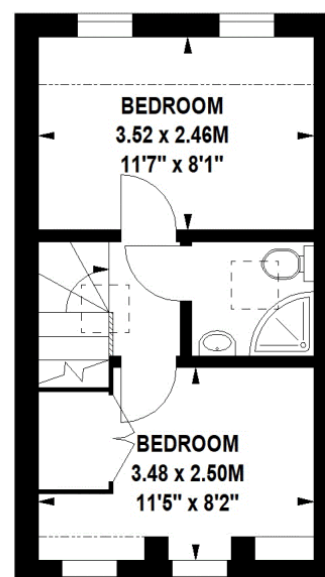
Ground Floor

269 sq ft



First Floor

258 sq ft



Second Floor

251 sq ft

The floor plan is not to scale and measurements and areas shown are approximate and therefore should be used for illustrative purposes only. The plan has been prepared in accordance with the RICS code of Measuring Practice and whilst we have confidence in the information produced, it must not be relied on. If there is any aspect of particular importance, you should carry out or commission your own inspection of the property. Copyright of FeaturePRO.

