



Richmond Hill

Richmond, TW10

Asking Price £1,250,000

Located in the desirable Glenmore House on Richmond Hill, this well-appointed ground-floor apartment offers 1,573 sq. ft. of comfortable living space, just a short walk from Richmond Park and the town centre.

The apartment welcomes you with a large hallway, leading into an impressive living room that benefits from plenty of natural light. The space is bright and inviting, with a central gas fireplace adding a touch of warmth and character.

The kitchen is thoughtfully designed and comes fully equipped with high-quality Miele appliances, providing everything you need for modern living. The principal bedroom is generously sized and features an en-suite bathroom for added convenience. Two additional bedrooms offer flexibility for family, guests, or home office use.

CHESTERTONS



Richmond Hill

Richmond, TW10

- 1573 sqft
- 3 Bedrooms
- Well maintained
- Prime Richmond Location



Finished to a high standard and ready to move into, this apartment presents a great opportunity for those looking for a well-maintained and spacious home in a prime Richmond location.

Location & Transport:

Glenmore House is conveniently situated close to Richmond Park and the town centre, where you'll find a variety of shops, restaurants, and amenities. Richmond Station, offering access to the District Line, Overground, and South Western Railway, is within walking distance, making commuting easy. Additionally, the A316 and M3 are nearby, providing quick road links to Central London and beyond.

This property offers a great combination of space, quality, and location in one of Richmond's most sought-after areas.

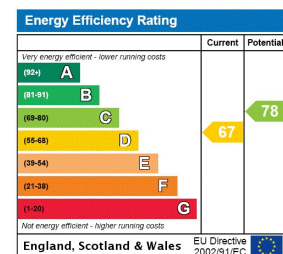
Tenure: Leasehold 960 years 4 months

Service Charge: £11702 Service charge per year: 6,426 - Reserve Fund: 5,276

Ground Rent: £85

Local Authority: London Borough of Richmond upon Thames

Council Tax Band: G



Chestertons Richmond Sales

23a Friars Stile Road

Richmond

Surrey

TW10 6NH

richmond@chestertons.co.uk

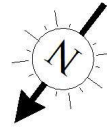
020 3758 3222

chestertons.co.uk

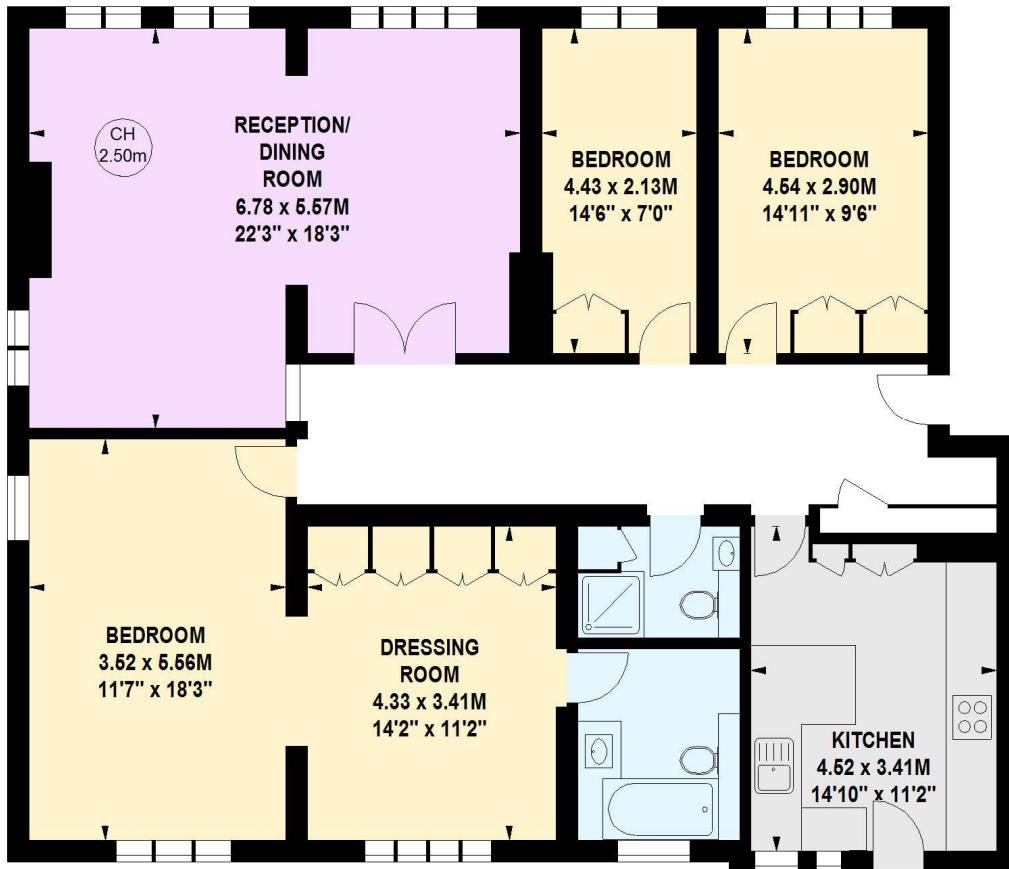
Glenmore House, TW10

Approximate gross internal area

146.22 sq m / 1574 sq ft



Key :
CH - Ceiling Height



Ground Floor

This floor plan is a representation for guidance purposes only, not for valuation.
Any figure is approximate and must not be relied on as a statement of fact.
Copyright of Wyatt Dixon Homes

